



A. Tube.

Step 1. Click File Menu > New, click **Part** and OK.

Step 2. Click **Front**  (plane) in the Feature Manager and click **Sketch**  from the Content toolbar, **Fig. 1**.

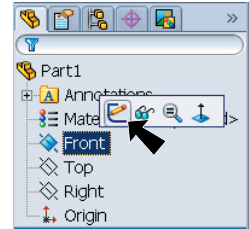
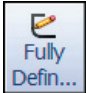



Fig. 1

Step 3. Click **Circle**  (S) on the Sketch toolbar.

Step 4. Draw **two circles** starting at the Origin , **Fig. 2**.

Step 5. Click **Fully Defined Sketch**  (D) on the Sketch toolbar and OK  in the Property Manager.

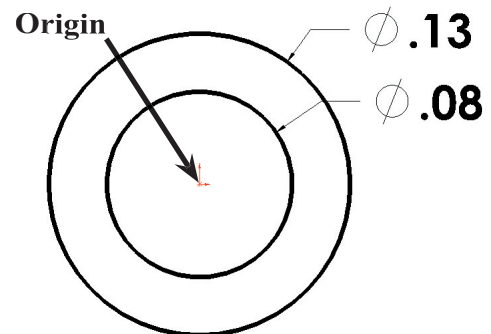
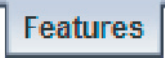
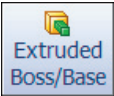




Fig. 2

Step 6. Dimension the circle as shown in **Fig. 2**.

Step 7. Click **Features**  on the Command Manager toolbar.

Step 8. Click **Extruded Boss/Base**  on the Features toolbar.

Step 9. Set **Depth**  to **.4** in the Extrude Property Manager and click OK , **Fig. 3** and **Fig. 4**.

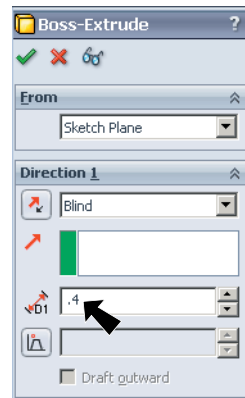


Fig. 3



Fig. 4



Step 10. Click Zoom to Fit  (F) on the View toolbar.

B. Save as "COUPLING".


Step 1. Click File Menu > Save As.

Step 2. Key-in **COUPLING** for the filename and press ENTER.

C. Appearance.

Step 1. Click the Coupling to select the part, click **Appearance Callout**  on the Content menu and click **COUPLING** , Fig. 5.

Step 2. In the Appearances Task pane, expand **Rubber**, click **Gloss** and in the lower pane select **glossy rubber**, Fig. 6.

Step 3. Back over in the Appearances Property Manager, under Color: click **Orange** swatch, Fig. 7 and OK  in the Property Manager, Fig. 8.

Step 4. Save. Use **Ctrl-S**.

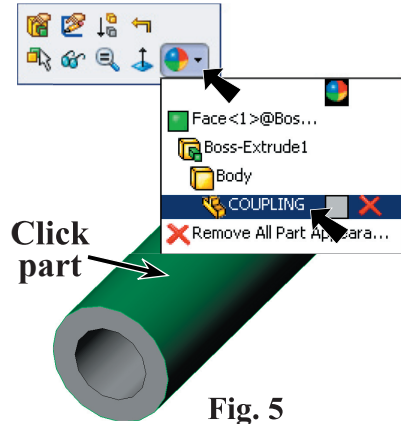


Fig. 5

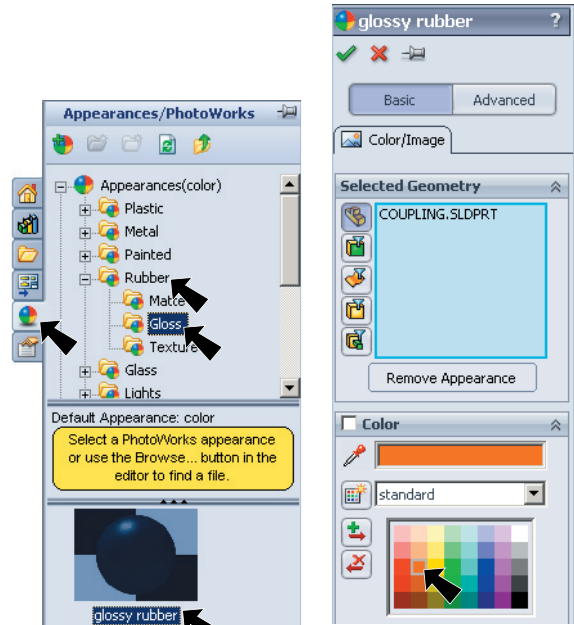


Fig. 6

Fig. 7

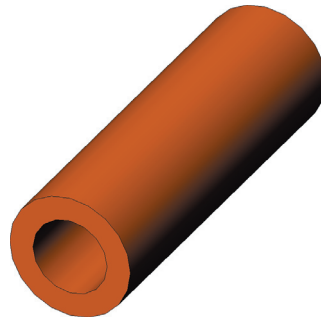


Fig. 8