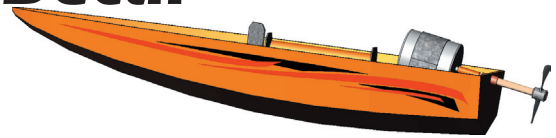


# PhotoWorks Decal



## A. Enable PhotoWorks.

Step 1. If necessary, open your **BOAT ASSEMBLY** file.

Step 2. If necessary, turn on PhotoWorks. Click Tools Menu > Add-Ins. Click to place a check in **PhotoWorks** check boxes under **Active Add-ins** and under **Start Up** and click OK, **Fig. 1**.

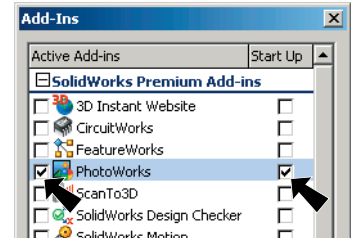



Fig. 1

## B. PhotoWorks Decal.

Step 1. Click **Right**  on the Standard Views toolbar.

Step 2. Click PhotoWorks Menu > Decal.

Step 3. In the Decals Property Manager **Image** tab:  
 under **Decal Preview**  
 click **Browse** and **My Documents** buttons  
 open your **png** bitmap file **Fig. 2**  
 under **Mask Image**  
 select **Image mask file**  
 click **Browse** (scroll down)  
 open your **png** bitmap **ALPHA** file

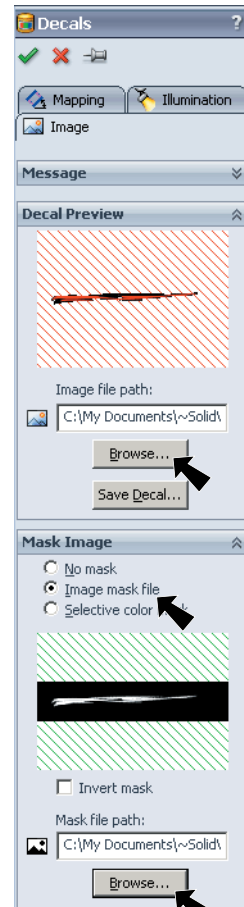




Fig. 2

Step 4. Click the **Mapping** tab at the top of the Decals Manager  
 under **Selected Geometry**, **Fig. 3**.  
 click **Apply changes at part level**   
**unselect all but Select Bodies**   
 (Select Bodies will show decal on both sides of hull)

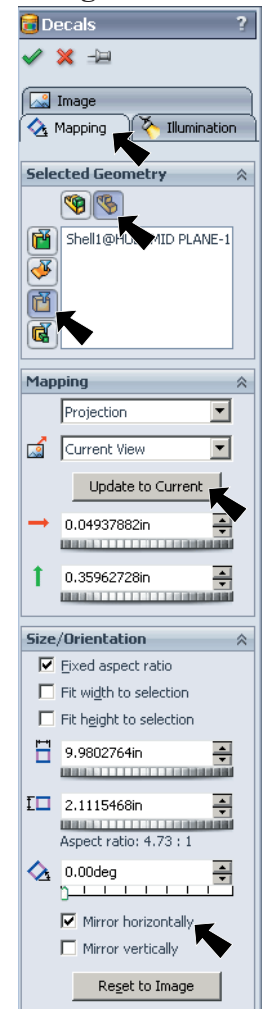


Fig. 3

click the **hull**, **Fig. 4**.  
 under **Size/Orientation**  
 check **Mirror horizontally**, **Fig. 3**.  
 Drag image around on the hull, **Fig. 5**. Drag corner

handles on decal to change size. Click OK  in the Property Manager when done.

Step 5. Save. Use **Ctrl-S**.

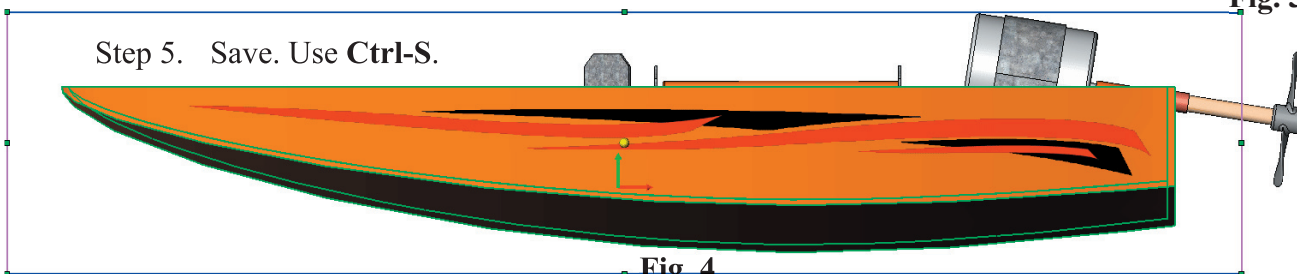


Fig. 4