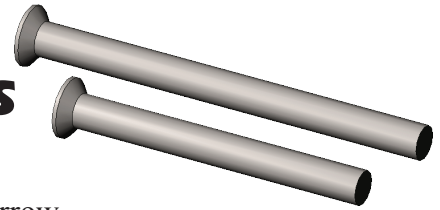


Toolbox Screws



A. Enable Toolbox Browser.

Step 1. If necessary, turn on Toolbox Browser, click Options down arrow on the toolbar and click Add-Ins.

Step 2. Check **SolidWorks Toolbox Browser** to place a check in the check box, then click OK, **Fig. 1**.

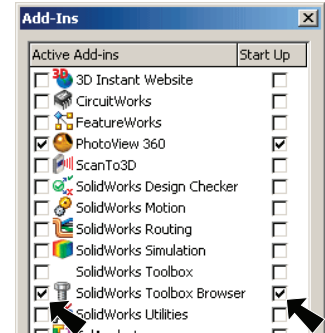




Fig. 1

B. Design Library.

Step 1. Click the **Design Library** tab  in the Task Pane (right side of drawing area), **Fig. 2**.

Step 2. Expand the **Toolbox**  **Toolbox**
 Expand **Ansi Inch** folder  **Ansi Inch**
 Expand **Bolts and Screws** folder  **Bolts and Screws**
 Click **Machine Screws (Countersunk)** folder  **Machine Screws (Countersunk)**

Step 3. In the lower pane, **right click Flat Head Screw (100)** and click **Create Part..**, **Fig. 2**.

Step 4. In the Property Manager, set:
Size to #8-32 Fig. 3
Length to 1.5
Drive Type to Cross
 click OK .

Step 5. Click **Zoom to Fit**  (F) on the View toolbar.

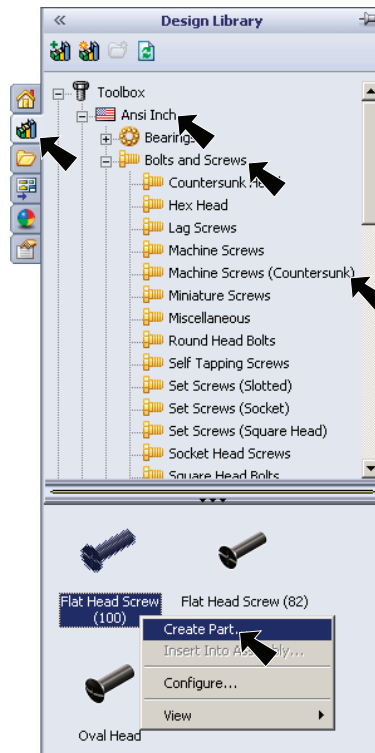


Fig. 2

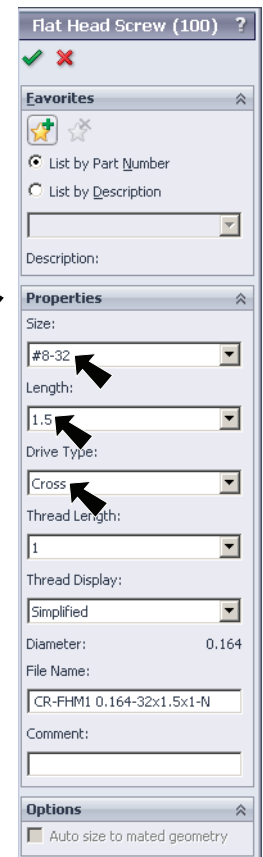


Fig. 3



Fig. 4

C. Save As FLAT HEAD SCREW 15.

Step 1. Click File Menu > Save As.

Step 2. In the Save As dialog box: **Fig. 5**
 key-in **FLAT HEAD SCREW 15**
 for the filename
 in the Save in dialog box, **navigate to**
My Documents/Chair folder.
 click Save button.

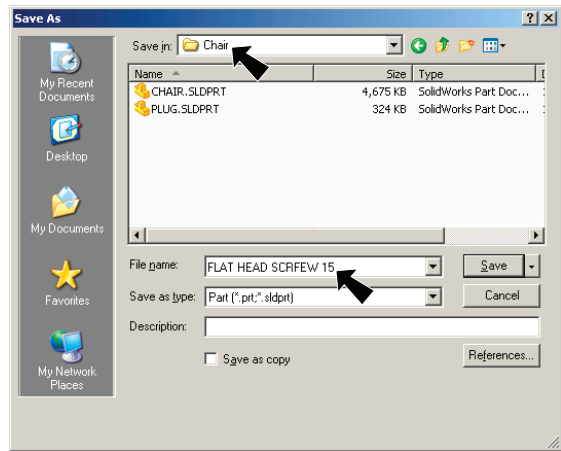


Fig. 5

D. Suppress Diameter Equation.

Step 1. Click **Equations** in the Feature Manager and
 click **Edit Equation** on the Content menu, **Fig. 6**.

Step 2. In the Equations dialog box, **uncheck 16 "diameter of body"**,
Fig. 7. Click OK.

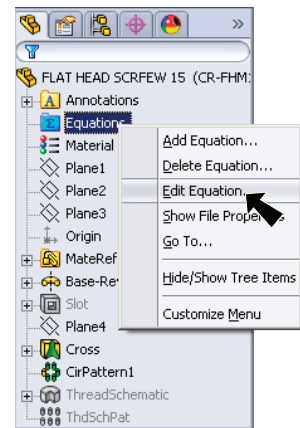


Fig. 6

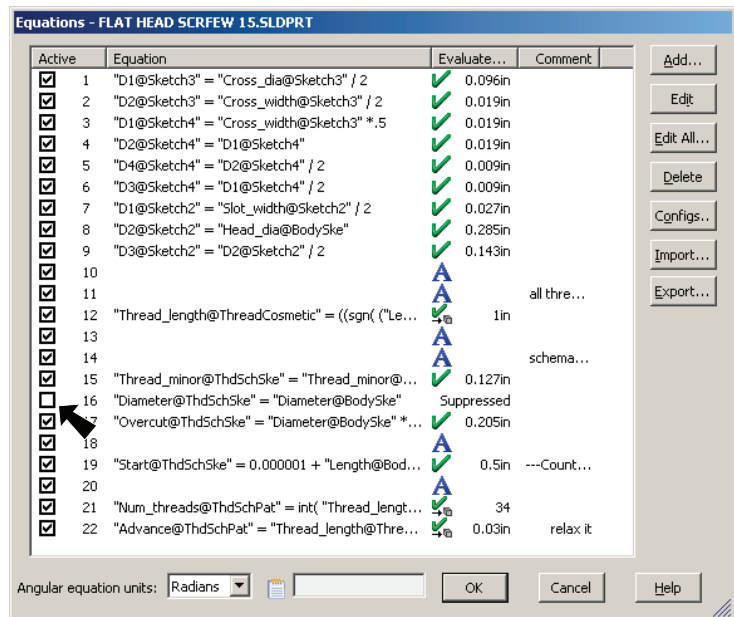


Fig. 7

E. Edit Sketch.

Step 1. Click **Base-Revolve** in the Feature Manager and click **Edit Sketch**

 on the Content menu, **Fig. 8**.

Step 2. Change **length dimension from 1.5 to 2** as shown in **Fig. 9**. To change dimension, double click the dimension and key-in new dimension, **Fig. 10**.

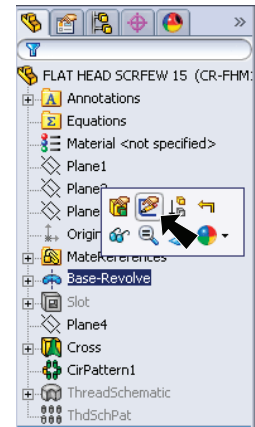
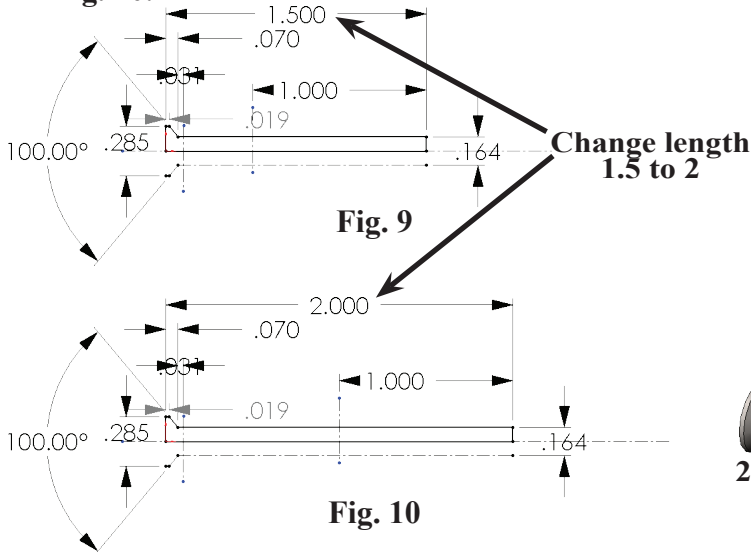


Fig. 8

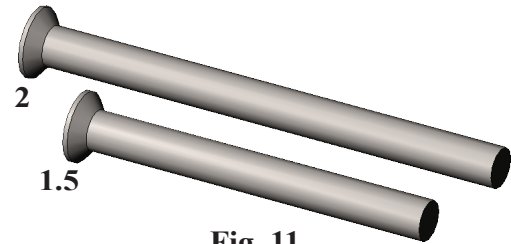



Fig. 11

Step 3. Click **Exit Sketch**  on the Sketch toolbar.

F. Save As FLAT HEAD SCREW 2.

Step 1. Click File Menu > Save As.

Step 2. In the Save As dialog box:
key-in **FLAT HEAD SCREW 2** for the filename
click Save button.

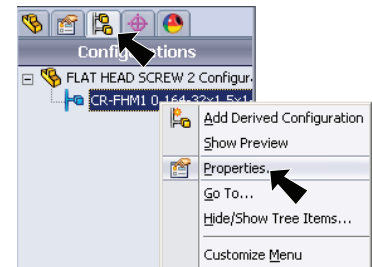



Fig. 12

Step 3. You now have two Flat Head Screws: **1.5 and 2 inch**, **Fig 11**.

G. Part Number in Bill of Materials.

Step 1. Click **Configuration Manager** tab  at top of the Feature Manager, **Fig. 12**.

Step 2. **Right click** the configuration and click **Properties**, **Fig. 12**.

Step 3. In the configuration Properties Manager set:
under **Bill of Materials Options**
change **length from 1.5 to 2**, **Fig. 13** CR-FHM10.16432x2x1-N
click OK .

Step 4. Save. Use **Ctrl-S**.

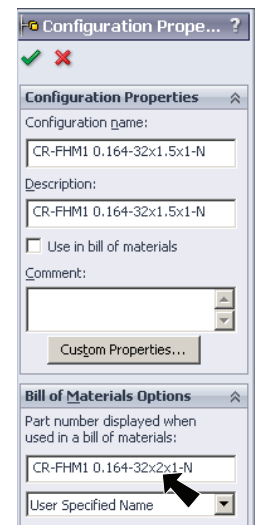


Fig. 13