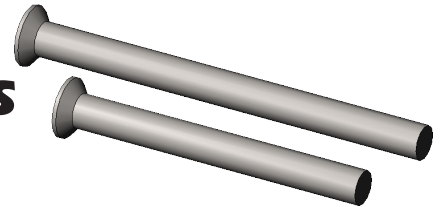


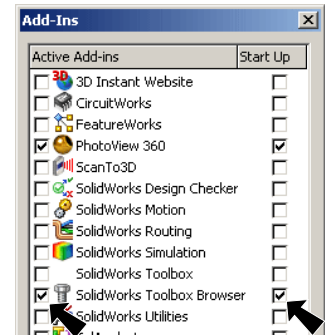
# Toolbox Screws



## A. Enable Toolbox Browser.


Step 1. If necessary, turn on Toolbox Browser, click Options down arrow on the toolbar and click Add-Ins.

Step 2. Check **SolidWorks Toolbox Browser** to place a check in the check box, then click OK, **Fig. 1**.




**Fig. 1**

## B. Design Library.

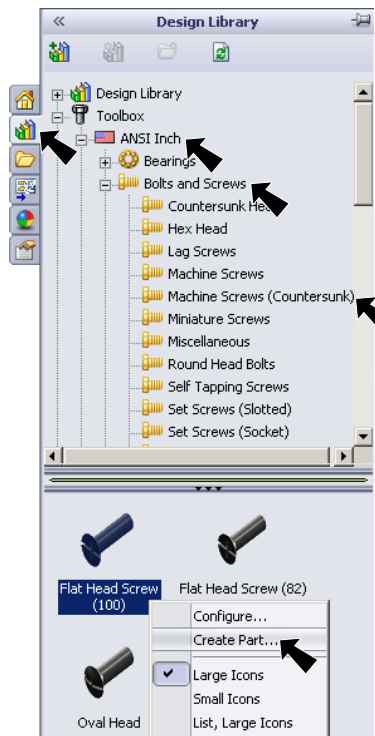
Step 1. Click the **Design Library** tab  in the Task Pane (right side of drawing area), **Fig. 2**.

Step 2. Expand the **Toolbox**  **Toolbox**  
 Expand **ANSI Inch** folder  **ANSI Inch**  
 Expand **Bolts and Screws** folder  **Bolts and Screws**  
 Click **Machine Screws (Countersunk)** folder  **Machine Screws (Countersunk)**

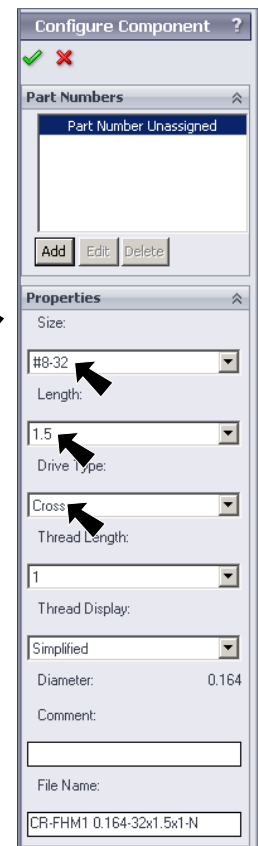
Step 3. In the lower pane, **right click Flat Head Screw (100)** and click **Create Part..**, **Fig. 2**.

Step 4. In the Property Manager set:  
**Size to #8-32 Fig. 3**  
**Length to 1.5**  
**Drive Type to Cross**  
 click OK .

Step 5. Click **Zoom to Fit**  (F) on the View toolbar.



**Fig. 2**



**Fig. 3**



**Fig. 4**

## C. Save As FLAT HEAD SCREW 15.

Step 1. Click File Menu > Save As.

Step 2. In the Save As dialog box: **Fig. 5** key-in **FLAT HEAD SCREW 15** for the filename in the Save in dialog box, **navigate to My Documents/Chair folder.** click Save button.

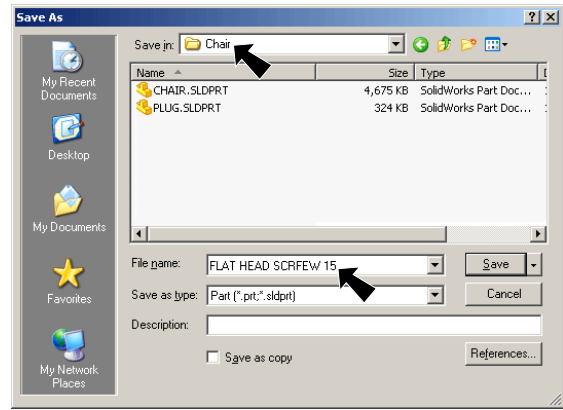


Fig. 5

## D. Unreference Screw.

Step 1. Break reference from Toolbox. Click Tools Menu > Options. Select System Option and Hole Wizard/Toolbox, then uncheck **Make this folder the default search location for Toolbox components,** Fig. 6. Click OK.

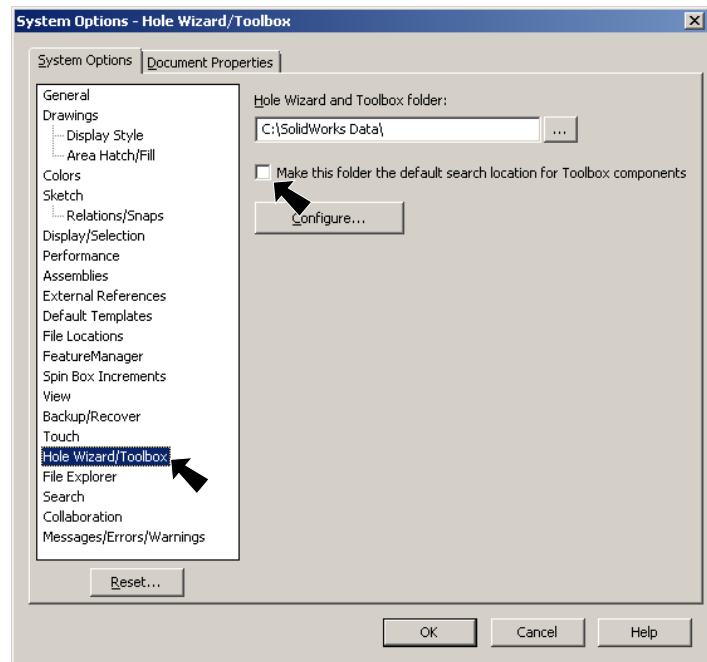


Fig. 6

## D. Suppress Diameter Equation.

Step 1. **Right click Equations** in the Feature Manager and click **Manage Equations** on the Content menu, Fig. 7.

Step 2. In the Equations dialog box, **right click "Diameter"** and click **Suppress,** Fig. 8. Click OK.

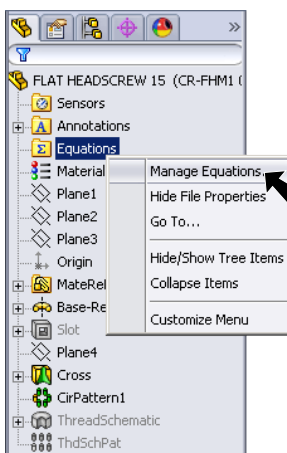


Fig. 7

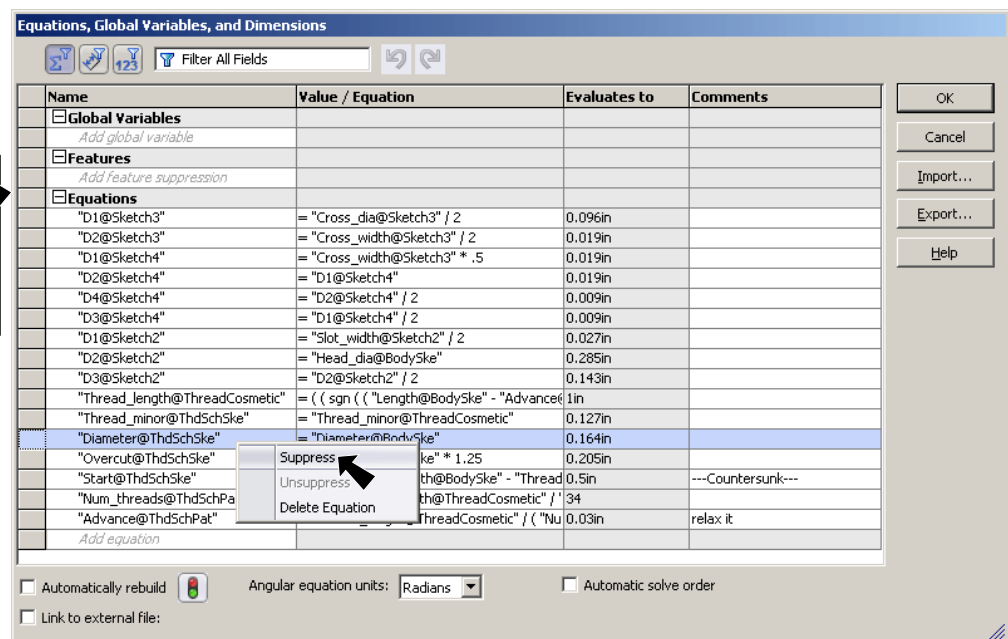


Fig. 8

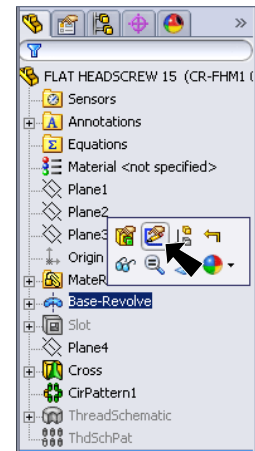
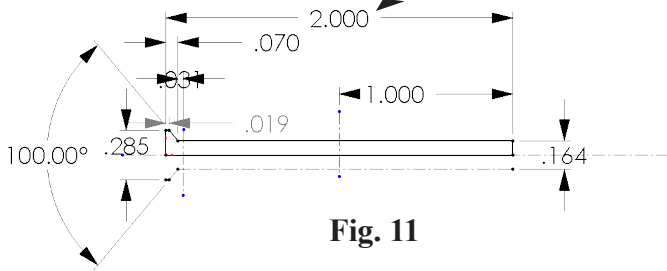
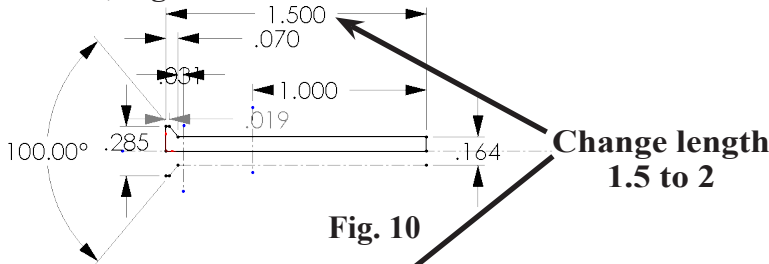
## E. Edit Sketch.

Step 1. Click **Base-Revolve** in the Feature Manager and click **Edit Sketch**

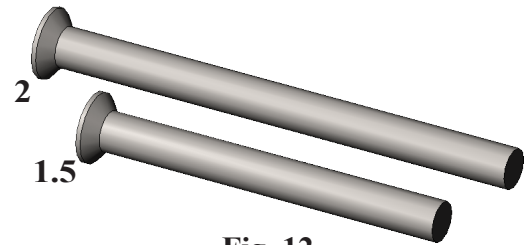


on the Content menu, **Fig. 9**.

Step 2. Change **length dimension from 1.5 to 2** as shown in **Fig. 10**. To change dimension, double click the dimension and key-in new dimension, **Fig. 11**.

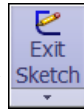


**Fig. 9**



**Fig. 12**

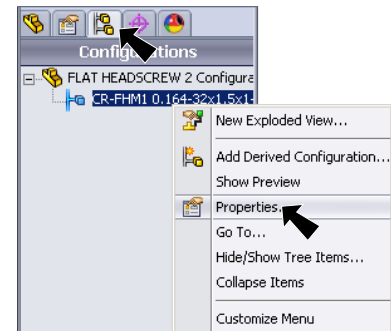
Step 3. Click **Exit Sketch** on the Sketch toolbar.



## F. Save As FLAT HEAD SCREW 2.

Step 1. Click File Menu > Save As.

Step 2. In the Save As dialog box:  
key-in **FLAT HEAD SCREW 2** for the filename  
click Save button.




**Fig. 13**

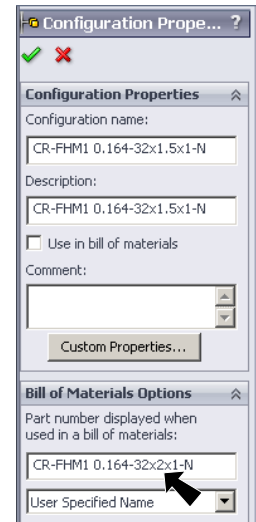
Step 3. You now have two Flat Head Screws: **1.5 and 2 inch**, **Fig. 12**.

## G. Part Number in Bill of Materials.

Step 1. Click **Configuration Manager** tab  at top of the Feature Manager, **Fig. 13**.

Step 2. **Right click** the configuration and click **Properties**, **Fig. 13**.

Step 3. In the configuration Properties Manager set:  
under **Bill of Materials Options**  
change **length from 1.5 to 2**, **Fig. 14** CR-FHM10.16432x2x1-N  
click OK .



**Fig. 14**

Step 4. Save. Use **Ctrl-S**.