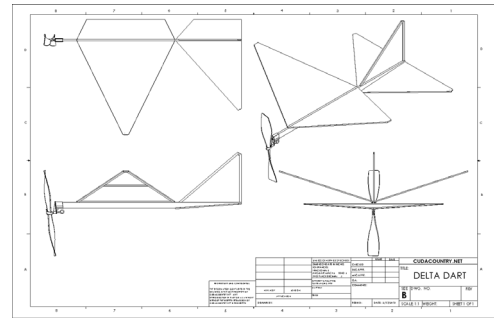




# Chapter 11

# Delta Dart Drawing



## A. Insert Views.

Step 1. Click File Menu > New, click **Drawing Metric** and OK.

Step 2. Click **Model View**  on the View Layout toolbar.

Step 3. Click **Browse** in the Property Manager.

Step 4. Select your **DELTA DART ASSEMBLY** file and click Open.

Step 5. In the Property Manager, under Orientation, **Fig. 1**

click **Right** 

check **Preview**

under Scale

select **Use custom scale**

select **User Defined**

key-in **2:3.5** for scale

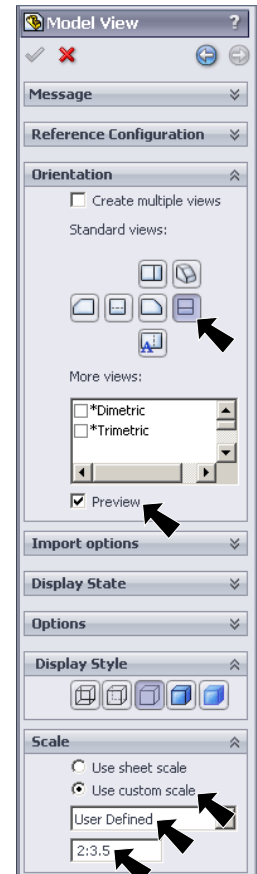


Fig. 1

Step 6. Move the cursor into the drawing and click to place the Right Side view as shown in **Fig. 2**. Align the front of Fuselage with the left border line and align the bottom with the top of the title block.

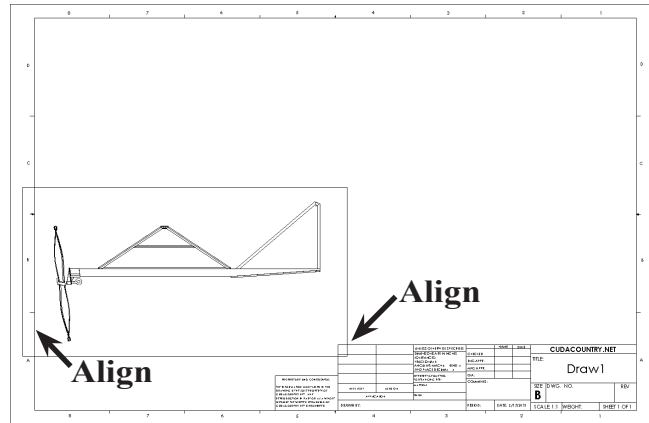


Fig. 2

Step 7. **Move the cursor straight up** and click to place the Top view as shown in **Fig. 3**. Align edge of Fuselage just below the top border line.

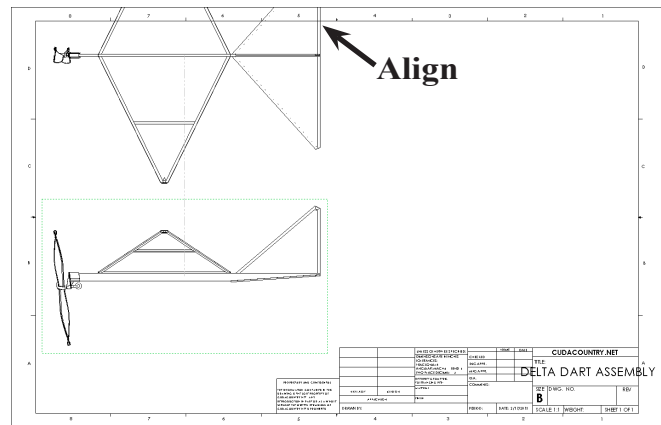


Fig. 3



Step 8. Move the cursor to the right of the Side View. Align Wing tip just off right border line. Click to place the back view, **Fig. 4**.

Step 9. Move the cursor to the top left corner of the drawing and click to place the Isometric view, **Fig. 5**.

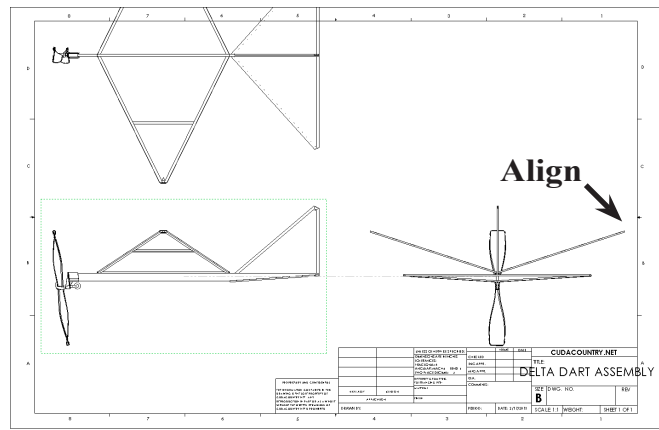
Step 10. Click OK  in the Property Manager.

Step 11. Grab any geometry of the Isometric view and move view to top right corner of drawing, **Fig. 6**.

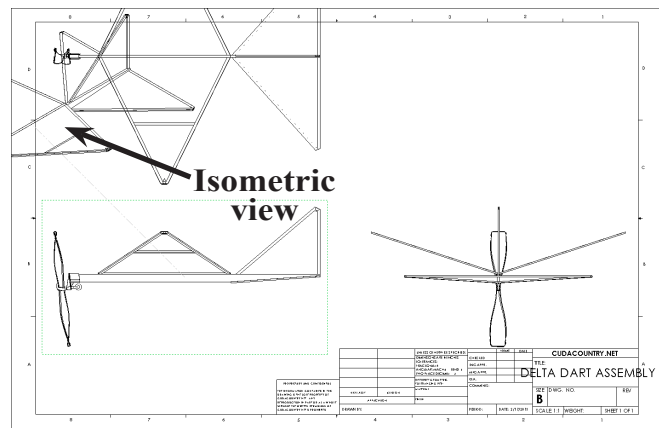
## B. Save as "DELTA DART".

Step 1. Click File Menu > Save As.

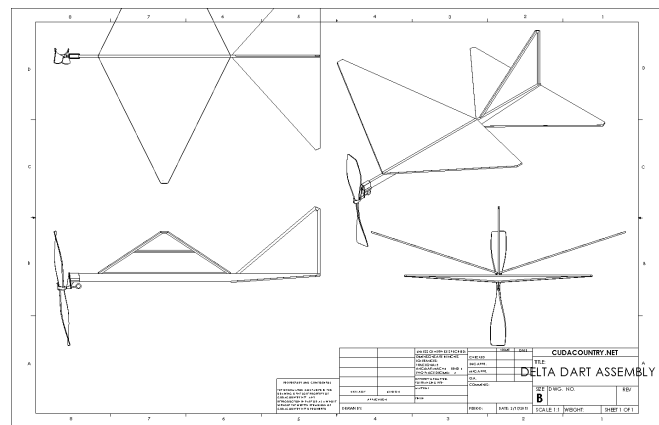
Step 2. Key-in **DELTA DART** for the filename and press ENTER.



**Fig. 4**






**Fig. 5**



**Fig. 6**

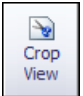
## C. Crop View.

Step 1. Click **Sketch**  on the Command Manager toolbar.

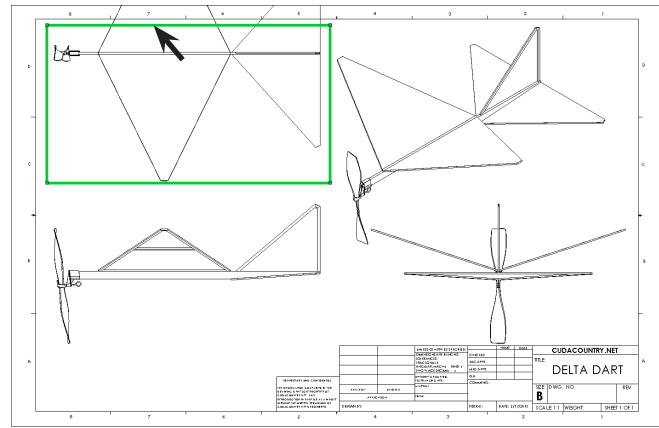
Step 2. Click **Corner Rectangle**  (S) in the **Rectangle flyout**  on the Sketch toolbar.

Step 3. Draw a corner rectangle around the top view, **Fig. 7**. Position the top line of rectangle between top edge of Fuselage and top border line.

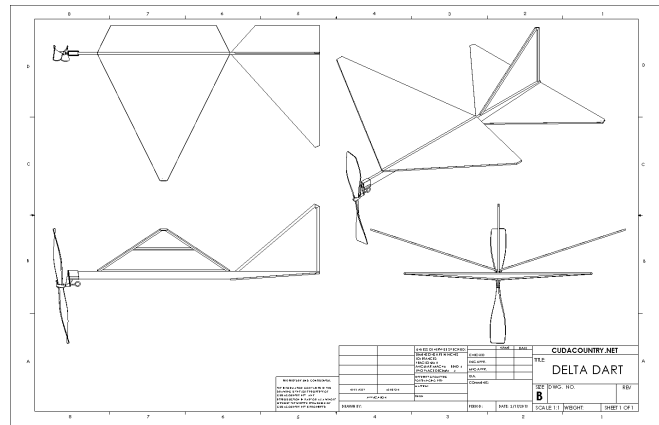
Step 4. Click **View Layout**  on the Command Manager toolbar.

Step 5. Click **Crop View**  on the View Layout toolbar, **Fig. 8**.

Step 6. Save. Use **Ctrl-S**.




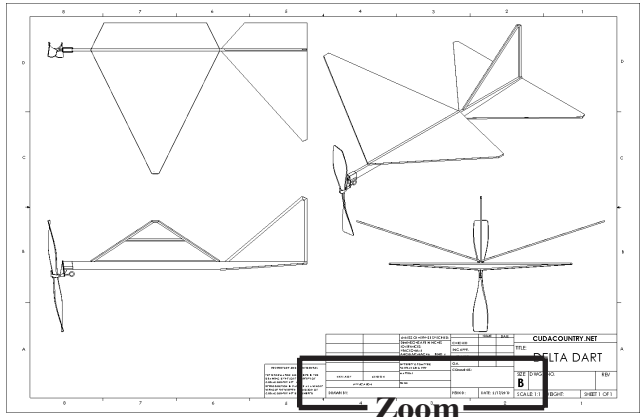
**Fig. 7**



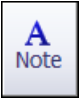
**Fig. 8**

## D. Add Your Name and Period to Title Block.

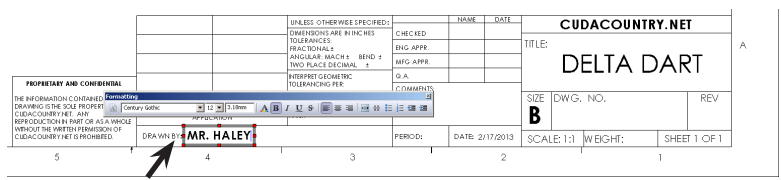
Step 1. Use the **Zoom to Area**  in the View toolbar to drag a zoom window around the **DRAWN BY** and **PERIOD** in the title block, **Fig. 9**.



**Fig. 9**

Step 2. Click **Note**  on the Annotation toolbar.

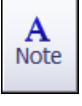
Step 3. Click just to the right of **DRAWN BY**:, **Fig. 10**.



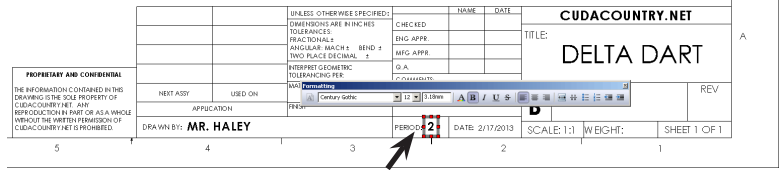
**Fig. 10**

Step 4. Lock the Caps and key-in **your first and last names**, **Fig. 10**.

Step 5. Click **OK**  in the Property Manager.

Step 6. Click **Note**  on the Annotation toolbar.

Step 7. Click just to the right of **PERIOD**: and key-in **your Period number**, **Fig. 11**.



**Fig. 11**

Step 8. Click **OK**  in the Property Manager.

Step 9. Save. Use **Ctrl-S**.

