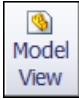


A. Insert Views.

Step 1. Click File Menu > New, click **Drawing** and OK.

Step 2. Click **Model View**  on the View Layout toolbar.

Step 3. Click **Browse** in the Property Manager.

Step 4. Select your **SKYHOOK** part file and click Open.

Step 5. In the Property Manager, under Orientation, **Fig. 1**

click **Right** 
check **Preview**

under Scale

select **Use custom scale** and set scale to **1:1**, **Fig. 1**.

Step 6. Move the cursor into the drawing and click to place the Right Side view as shown in **Fig. 2**.

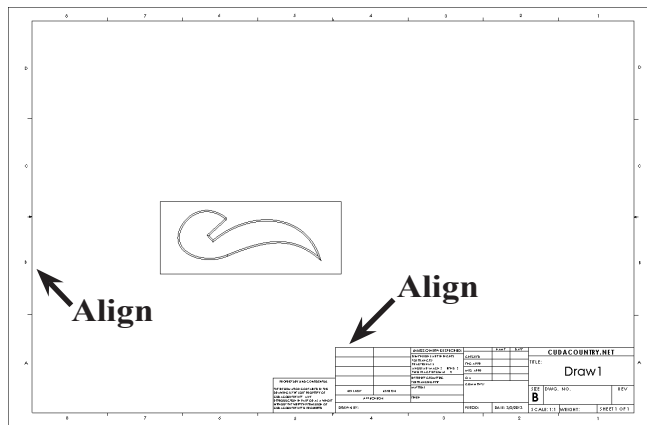


Fig. 2

Step 7. **Move the cursor straight up** and click to place the Top view as shown in **Fig. 3**.

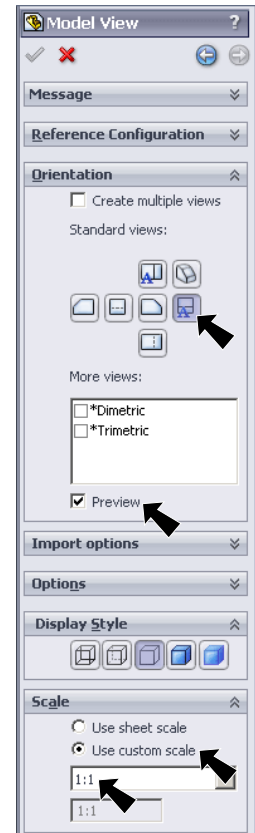


Fig. 1

Step 8. Move the cursor to the right of the Side view and click to place Back view, **Fig. 4**.

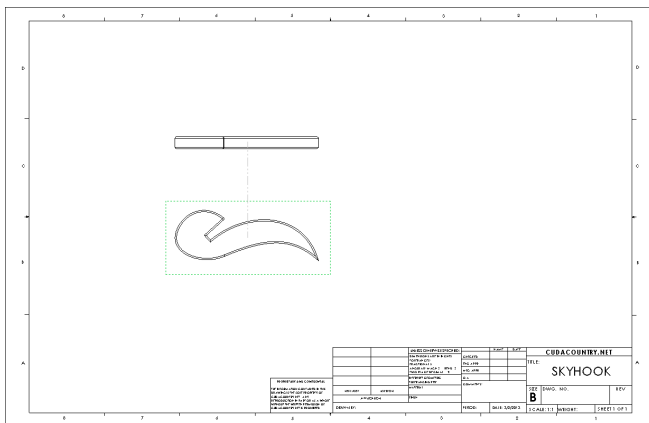


Fig. 3

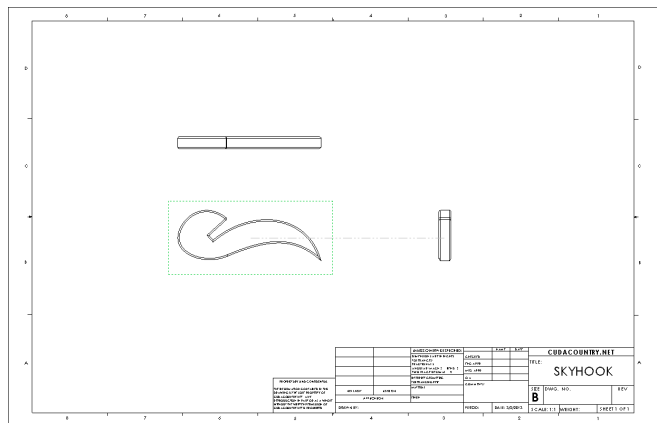
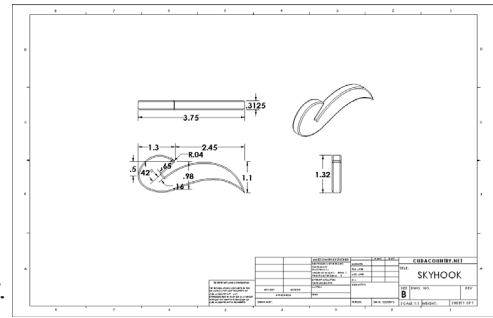


Fig. 4



Step 9. Move the cursor to the top left corner of the drawing and click to place the Isometric view, **Fig. 5**.

Step 10. Click OK  in the Property Manager.

Step 11. Grab any geometry of the Isometric view and move view to between Top view and Back view of drawing, **Fig. 6**.

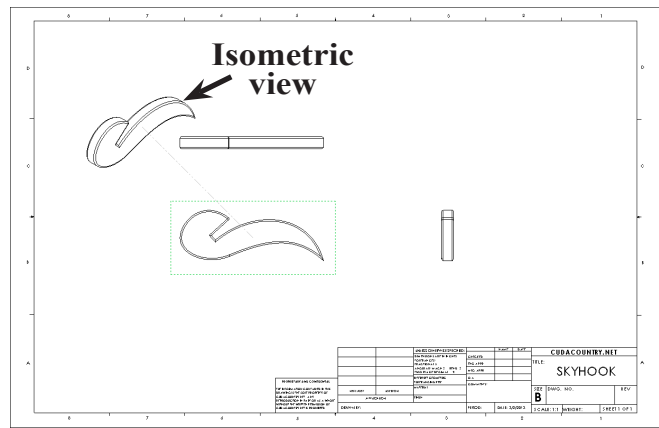


Fig. 5


B. Save as "SKYHOOK".

Step 1. Click File Menu > Save As.



Step 2. Key-in **SKYHOOK** for the filename and press ENTER.

C. Display Dimensions.

Step 1. Click **Annotation**  on the Command Manager toolbar.

Step 2. Click **Model Items**  on the Annotation toolbar.

Step 3. In the Property Manager:
under Source: **Fig. 7**
select **Entire model**
under Dimensions

select **Marked for drawing** 
in the graphics area click the **Right view**, **Fig. 8**
click OK .

Step 4. Arrange the dimensions as shown in **Fig. 8**. To hide a dimension, right click and select Hide from menu.

You can only place dimensions here- you can not change dimensions.

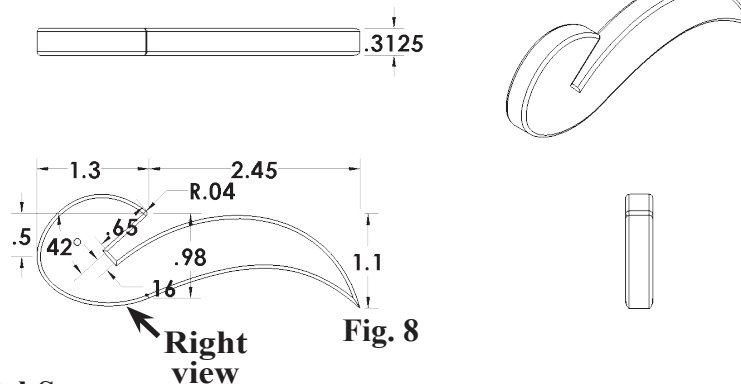


Fig. 8

Step 5. Save. Use **Ctrl-S**.

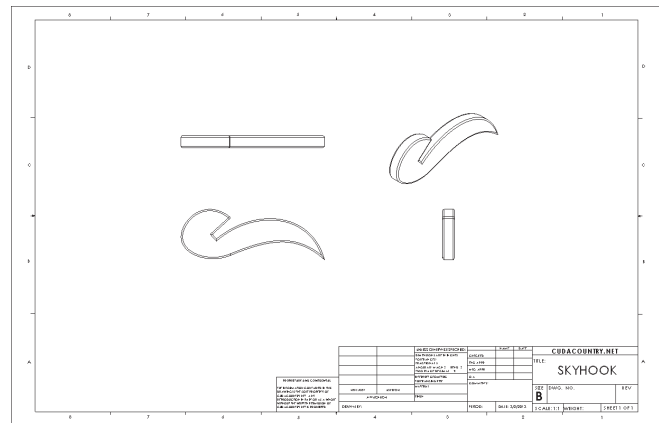


Fig. 6

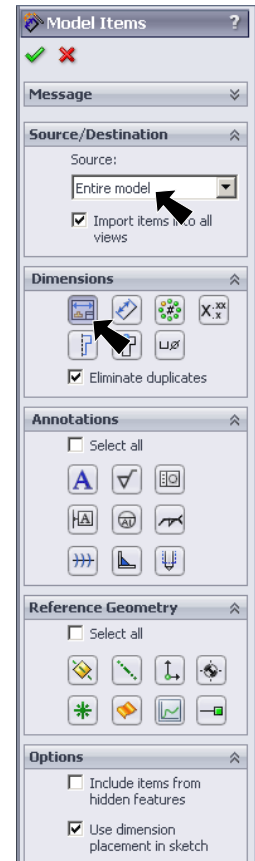


Fig. 7

D. Add Dimensions.

Step 1. Click **Sketch**  on the Command Manager toolbar.

Step 2. Click **Smart Dimension**  (S) on the Sketch toolbar.

Step 3. Add the dimensions 3.75 and 1.32, **Fig. 9**. To Smart dimension click the vertex, then move the cursor out away from the line and click. Arrange the dimensions as **Fig. 9**. **You can only place dimensions here- you can not change dimensions.**

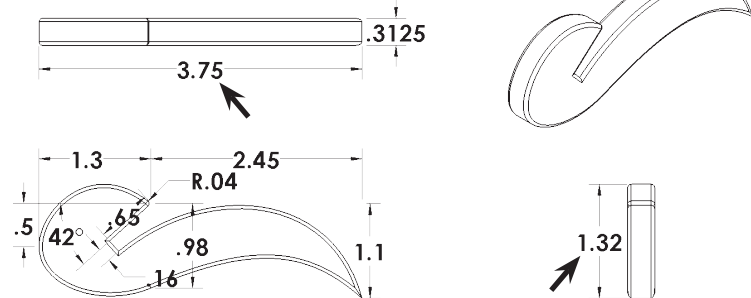



Fig. 9

Step 4. Save. Use **Ctrl-S**.

E. Add Your Name and Period to Title Block.

Step 1. Use the **Zoom to Area**  in the View toolbar to drag a zoom window around the **DRAWN BY** and **PERIOD** in the title block, **Fig. 10**.

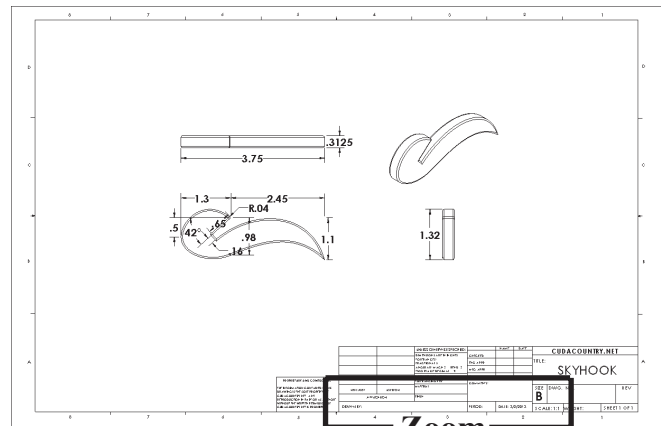
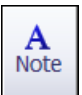


Fig. 10 Zoom

Step 2. Click **Note**  on the Annotation toolbar.

Step 3. Click just to the right of **DRAWN BY**., **Fig. 11**.

Step 4. Lock the Caps and key-in **your first and last names**, **Fig. 11**.

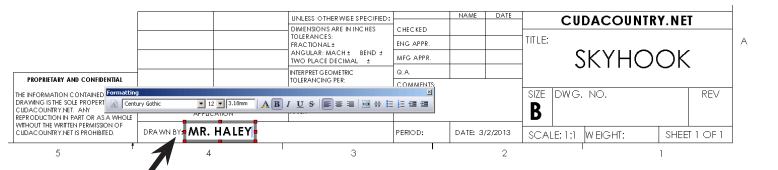


Fig. 11

Step 5. Click **OK**  in the Property Manager.

Step 6. Click **Note**  on the Annotation toolbar.

Step 7. Click just to the right of **PERIOD**: and key-in **your Period number**, **Fig. 12**.

Step 8. Click **OK**  in the Property Manager.

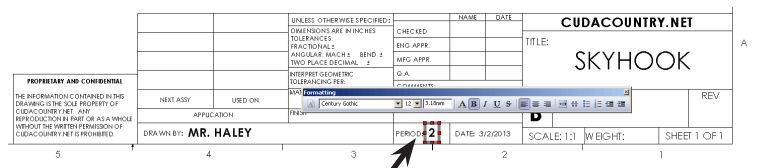


Fig. 12

Step 9. Save. Use **Ctrl-S**.