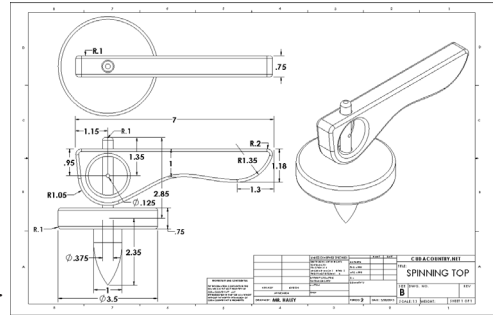


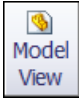
# Chapter 6

# Spinning Top Drawing



## A. Insert Views.

Step 1. Click File Menu > New, click **Drawing** and OK.

Step 2. Click **Model View**  on the View Layout toolbar.

Step 3. Click **Browse** in the Property Manager.

Step 4. Select your **Spinning Top Assembly** file and click Open.

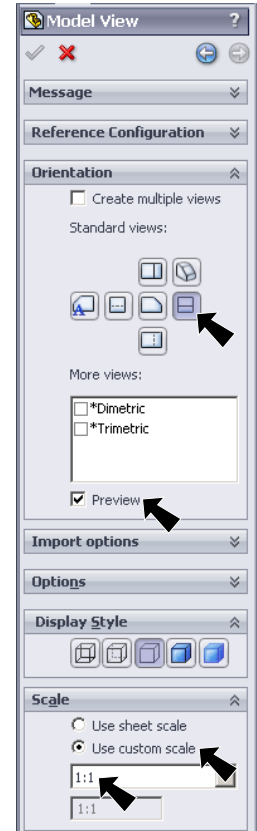
Step 5. In the Property Manager, under Orientation, **Fig. 1**

click **Right** 

check **Preview**

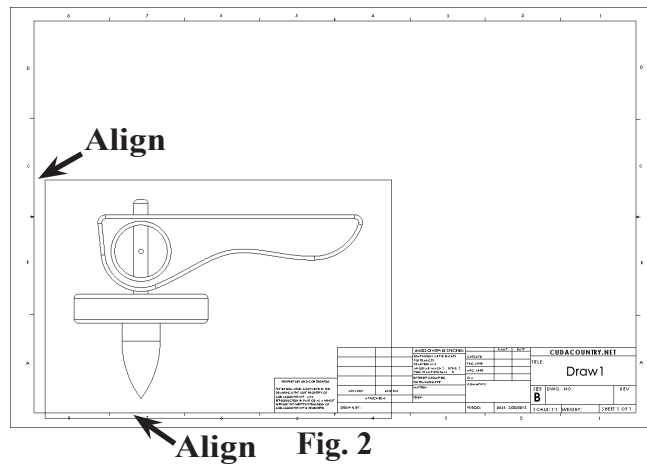
under Scale

select **Use custom scale** and set scale to **1:1**, **Fig. 1**.



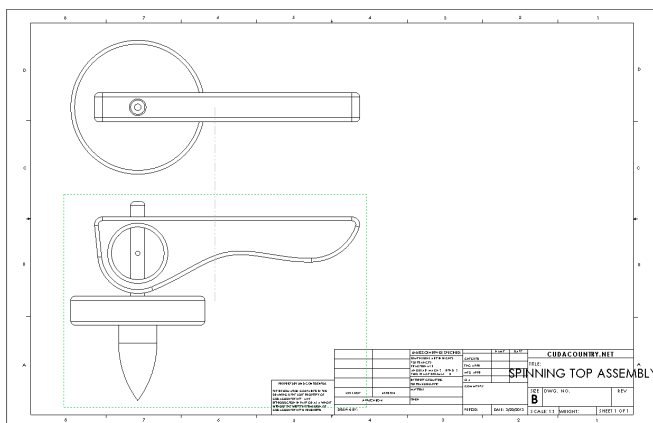
**Fig. 1**

Step 6. Move the cursor into the drawing and click to place the Right Side view as shown in **Fig. 2**.



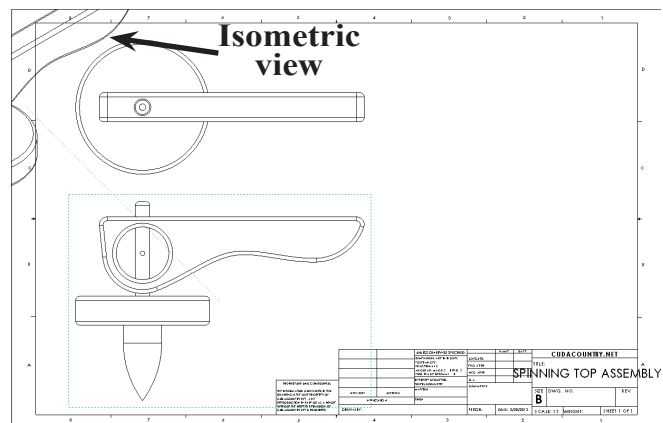
**Fig. 2**

Step 7. **Move the cursor straight up** and click to place the Top view as shown in **Fig. 3**.



**Fig. 3**

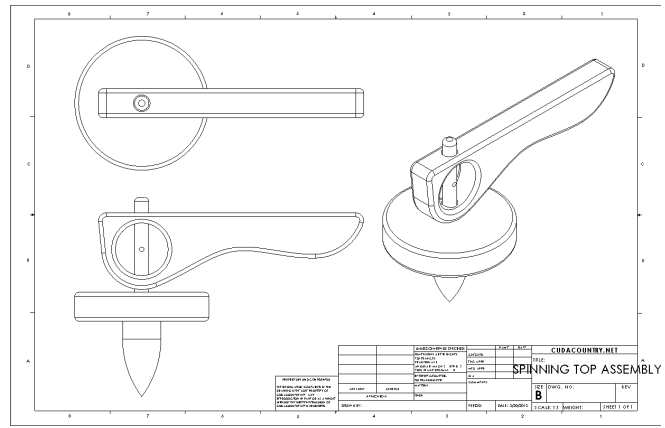
Step 8. Move the cursor to the top left corner of the drawing and click to place the Isometric view, **Fig. 4**.



**Fig. 4**

Step 9. Click OK  in the Property Manager.

Step 10. Grab any geometry of the Isometric view and move view to left of Right and Top views, **Fig. 5**.



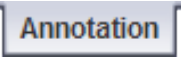
**Fig. 5**

## B. Save as "SPINNING TOP".

Step 1. Click File Menu > Save As.



Step 2. Key-in **SPINNING TOP** for the filename and press ENTER.

## C. Display Dimensions.

Step 1. Click **Annotation**  on the Command Manager toolbar.

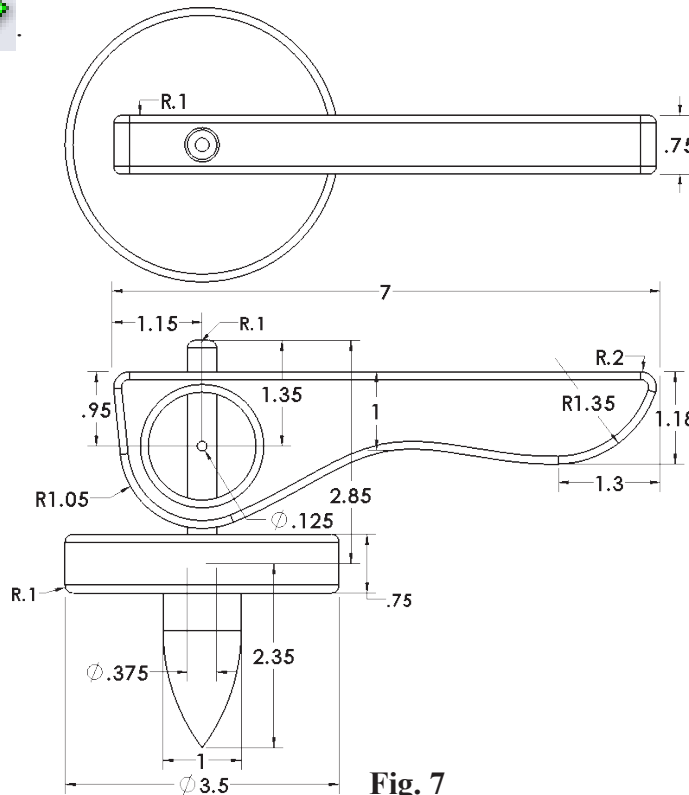
Step 2. Click **Model Items**  on the Annotation toolbar.

Step 3. In the Property Manager:  
 under Source: **Fig. 6**  
 select **Entire model**  
 under Dimensions

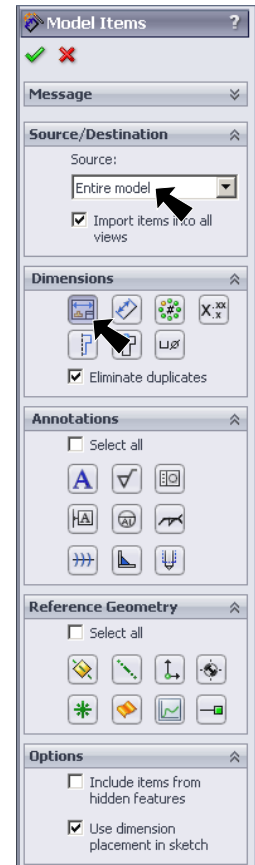
select **Marked for drawing**   
 in the graphics area click the **Right view**, **Fig. 7**  
 click OK .

Step 4. Arrange the dimensions as shown in **Fig. 7**. To hide a dimension, right click and select Hide from menu. **You can only place dimensions here- you can not change dimensions.**

Step 5. Save.  
 Use **Ctrl-S**.




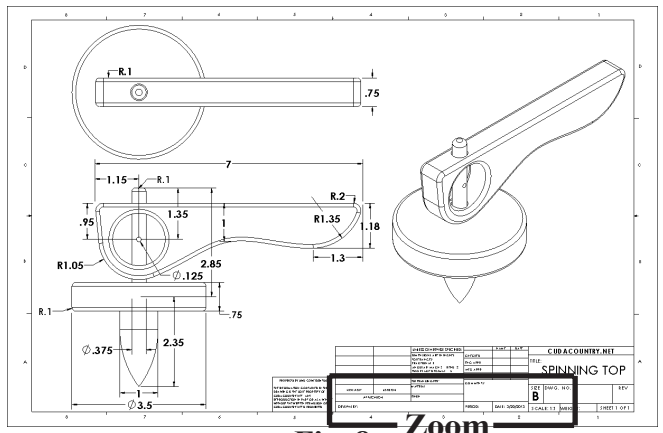
**Fig. 7**



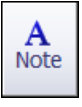
**Fig. 6**

## D. Add Your Name and Period to Title Block.

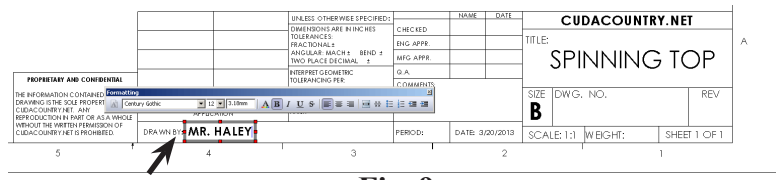
Step 1. Use the **Zoom to Area**  in the View toolbar to drag a zoom window around the **DRAWN BY** and **PERIOD** in the title block, **Fig. 8**.



**Fig. 8** Zoom

Step 2. Click **Note**  on the Annotation toolbar.

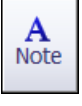
Step 3. Click just to the right of **DRAWN BY**., **Fig. 9**.



**Fig. 9**

Step 4. Lock the Caps and key-in **your first and last names**, **Fig. 10**.

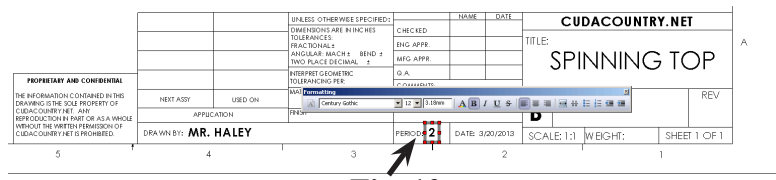
Step 5. Click **OK**  in the Property Manager.

Step 6. Click **Note**  on the Annotation toolbar.

Step 7. Click just to the right of **PERIOD**: and key-in **your Period number**, **Fig. 10**.

Step 8. Click **OK**  in the Property Manager.

Step 9. Save. Use **Ctrl-S**.



**Fig. 10**