



## Export DXF to Illustrator

### A. Export Skyhook Sketch as DXF".

Step 1. Open your SKYHOOK part file.

Step 2. **Suppress Fillet feature** in the Feature Manager, **Fig. 1**. To suppress feature, **right click Fillet1** and click **Suppress**  from the menu.

Step 3. Click File Menu > Save As.

Step 4. In the Save As dialog box, change **Save as type: to Dxf** and click Save, **Fig. 2**.

Step 5. In the DXF/DWG Property Manager set:

under Export, **Fig. 3**  
click **Annotation views**

under Views to Export  
uncheck **Current**  
check **Right**

click OK 

Step 6. In the DXF/DWG Cleanup dialog box:

click Save, **Fig. 4**.

Step 7. Close the Skyhook part file and

**Don't**

**Save.** Use File Menu > Close.

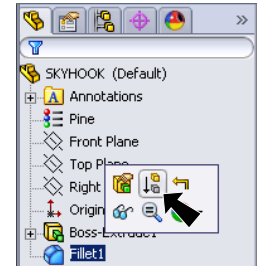


Fig. 1

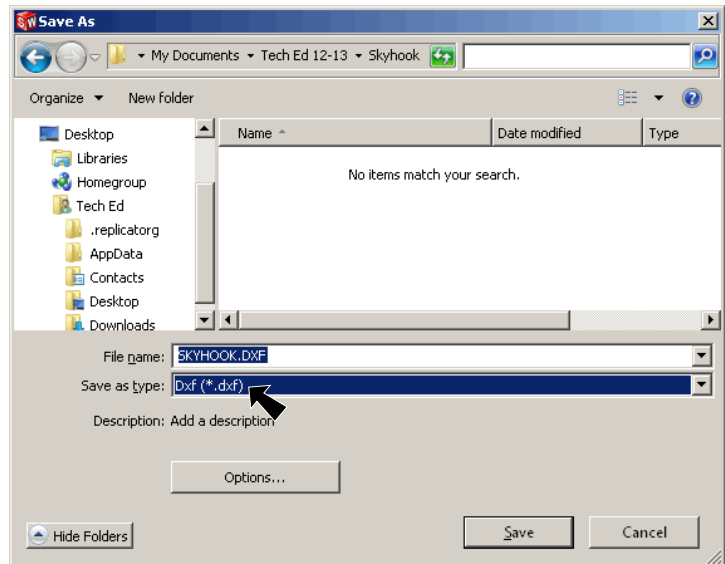


Fig. 2

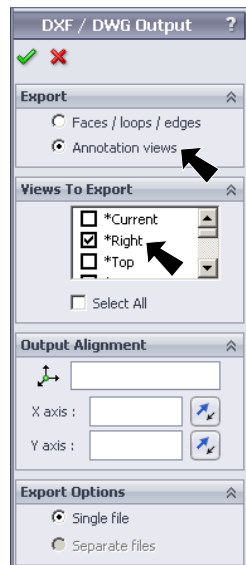


Fig. 3

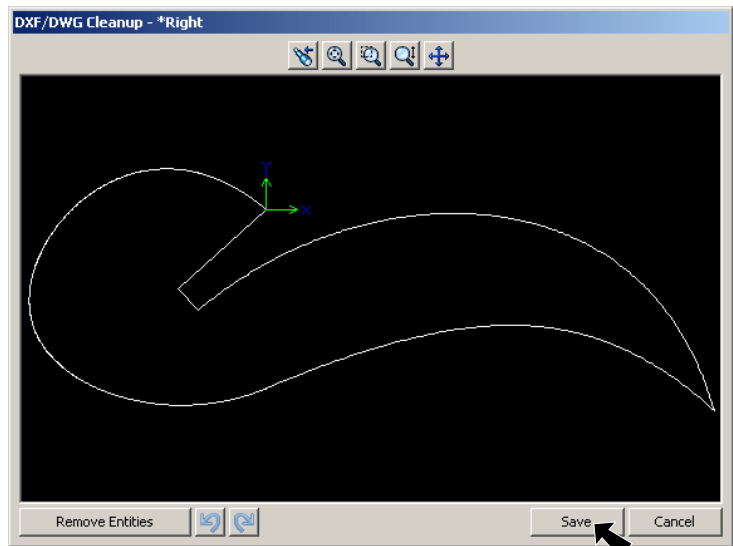
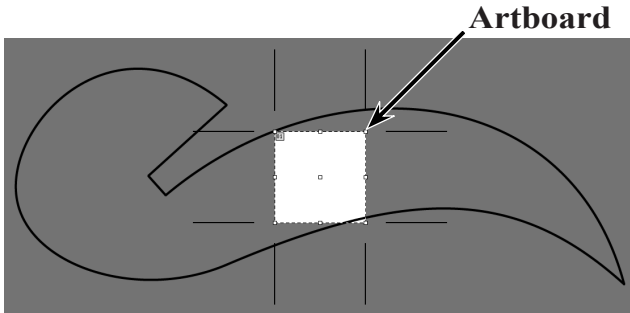


Fig. 4

## B. Open Skyhook DXF in Illustrator.

Step 1. Open your SKYHOOK.DXF file in Adobe Illustrator.

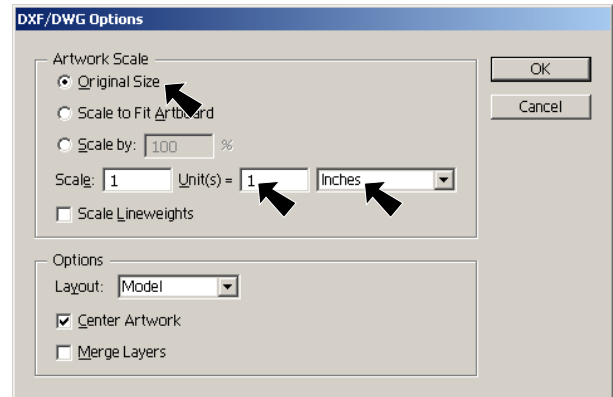
Step 2. In DXF/DWG Option dialog box:  
under Artwork Scale, **Fig. 5**  
select **Original Size**  
set units **Inches**  
set **Unit(s) = 1**  
and click OK, **Fig. 6**.



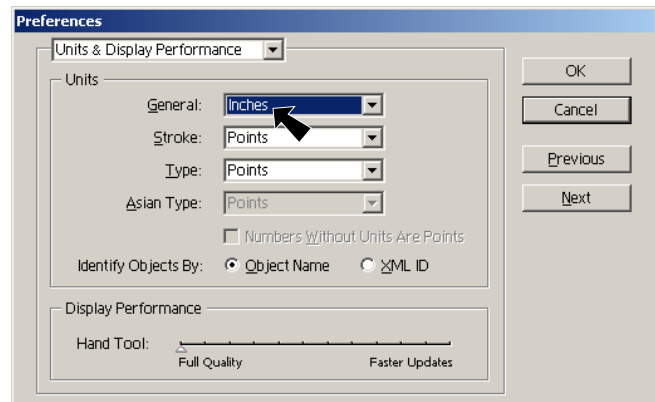
**Fig. 6**

Step 3. Click Edit Menu > Preferences > Unit & Display Performance.

Step 4. Set units to **Inches**, **Fig. 7**.




**Fig. 5**



**Fig. 7**

### C. Set Artboard Size.

Step 1. Double click Artboard

Tool  in the Tools panel, Fig. 8.

Step 2. In the Artboard Options dialog box set:

Preset: **Fit Artboard to Artwork bounds**,  
**Fig. 9**  
click OK, **Fig. 10**.

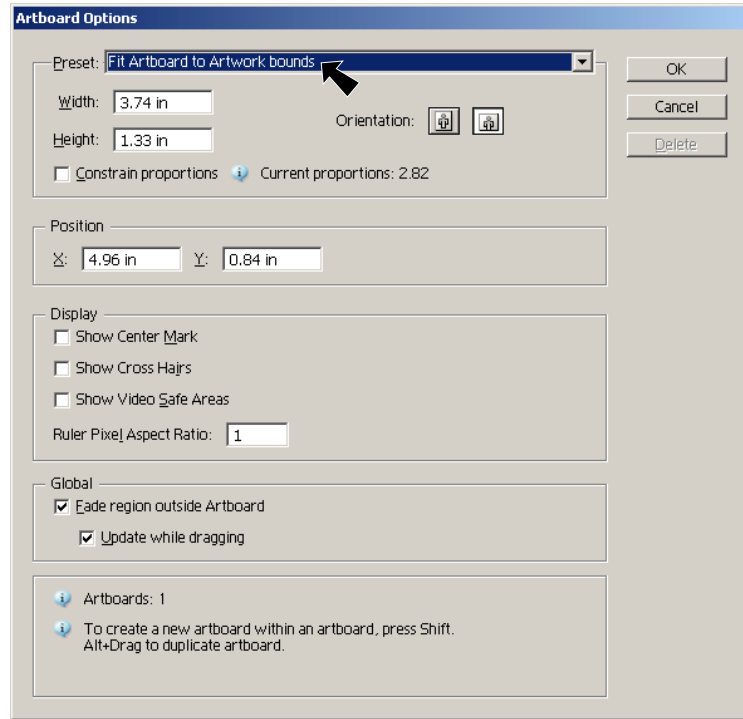


Fig. 9

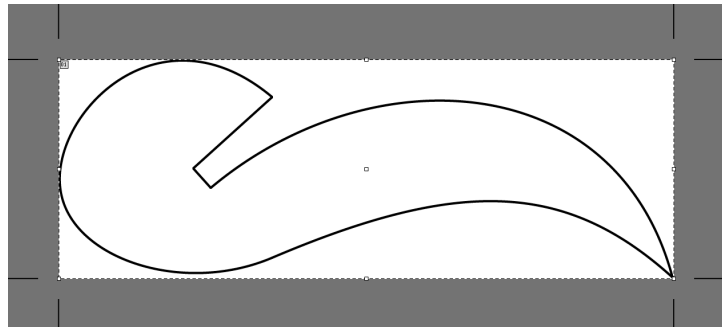


Fig. 8

Fig. 10

## D. Set Color and Line Width.

Step 1. Press **Escape** key to deselect the Artboard.

Step 2. Use **Ctrl-0** to **Fit Artboard to Window**.

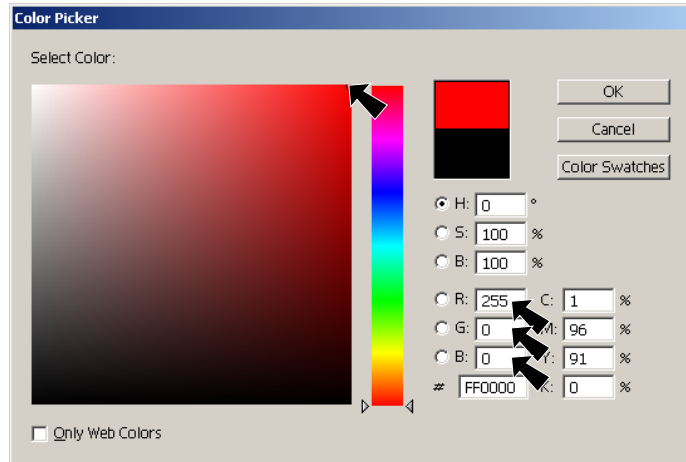
Step 3. Use **Ctrl-A** to select all.

Step 4. **Double click** the **Stroke box**  in the Tools panel, **Fig. 11**.

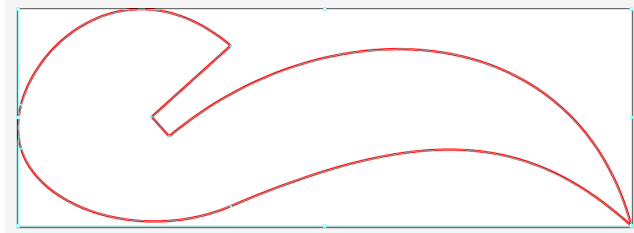
Step 5. Click **Red** in very top right corner of the Color field in Color Picker dialog box, **Fig. 12**. Confirm RGB values are 255, 0, 0. Click **OK**, **Fig. 13**.

Step 6. Key-in **Stroke .001** in the Control Panel, **Fig. 14** and **Fig. 15**.

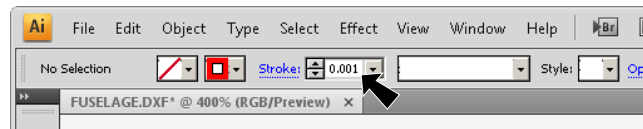
Step 7. Save the Illustrator file.  
Use **Ctrl-S** and click **Save**.



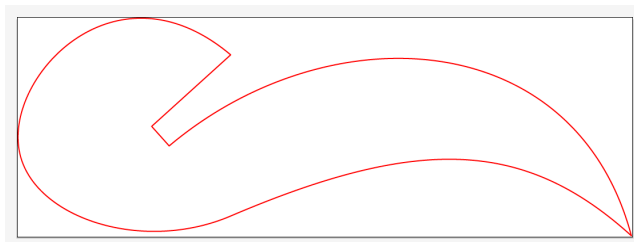
**Fig. 12**



**Fig. 13**



**Fig. 14**



**Fig. 15**



**Fig. 11**