

A. Sketch 1.5 by 3 Rectangle.

- Step 1. Click File Menu > New, click **Part Metric** and OK.
- Step 2. Click **Front Plane** in the Feature Manager and click **Sketch** from the Content toolbar, **Fig. 1**.
- Step 3. Click **Rectangle** (S) on the Sketch toolbar.

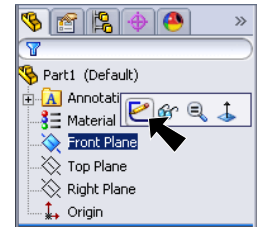


Fig. 1

- Step 4. Draw a rectangle starting at the Origin , **Fig. 2**. The Origin should be in the bottom right corner of rectangle. This will make adding structural members a little easier.

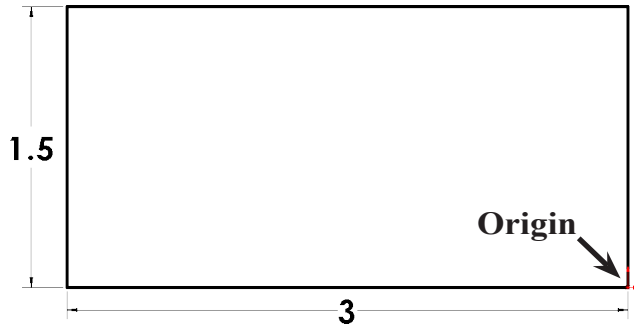


Fig. 2

- Step 5. Click **Smart Dimension** (S) on the Sketch toolbar.
- Step 6. Set dimensions as shown in **Fig. 3**. 1.5 x 3

- Step 7. Click **Zoom to Fit** (F) on the View toolbar.

B. Points.

- Step 1. Click **Point** on the Sketch toolbar.
- Step 2. Draw Point at midpoint of each line of rectangle, **Fig. 3**. To find midpoint, move cursor across line and as cursor approaches midpoint highlights you click.

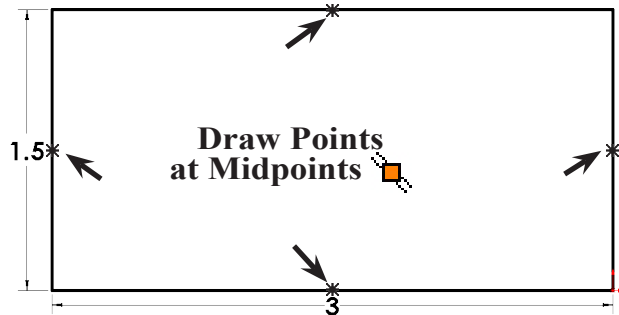


Fig. 3

- Step 3. Click **Exit Sketch** on the Sketch toolbar.

C. Save as "PROFILE".

- Step 1. Click File Menu > Save As.
- Step 2. Key-in **PROFILE** for the filename and press ENTER.



D. Properties 1.5 by 3.

Step 1. Right click Annotation  in the Feature Manager and click **Show Feature Dimensions** from menu, **Fig. 4**.

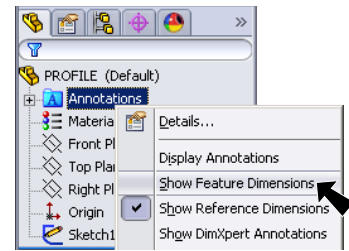


Fig. 4

Step 2. Click File Menu > Properties.

Step 3. In the Summary Information dialog box on the Custom tab set:

under Property Name, **Fig. 5**
key-in **StockSize**
under Type
select **Text**

under Value/Text
Expression
click in box to
select the field

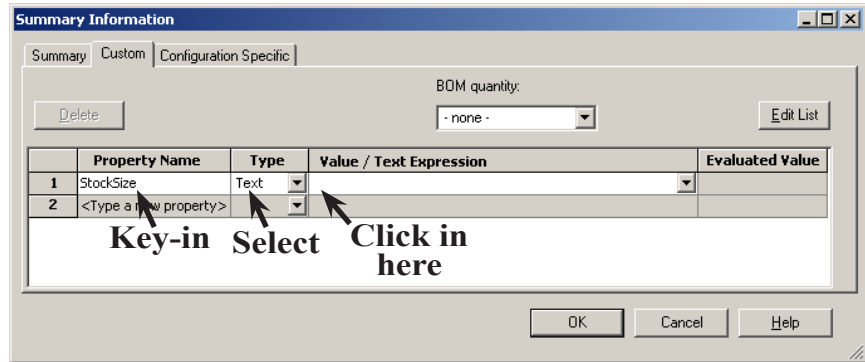


Fig. 5

click **1.5 dimension**
in sketch, Fig. 6. You might have to
move Summary Information dialog
out of the way.

key-in space (spacebar) X space
(spacebar), **Fig. 7**

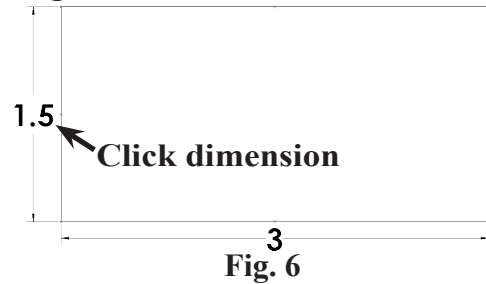


Fig. 6

click **3 dimension in sketch, Fig. 8**

under Property
Name (below
StockSize), **Fig. 9**

key-in
Description

under Type
select **Text**
under Value/Text
Expression

key-in **1.5mm x 3mm**

press Tab key and **Evaluated Value** updates to:

1.5 x 3
1.5mm x 3mm

click **OK**.

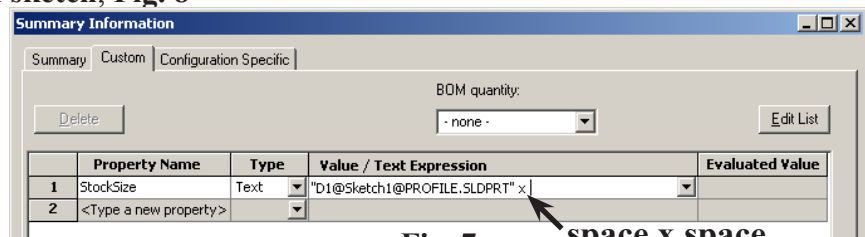


Fig. 7

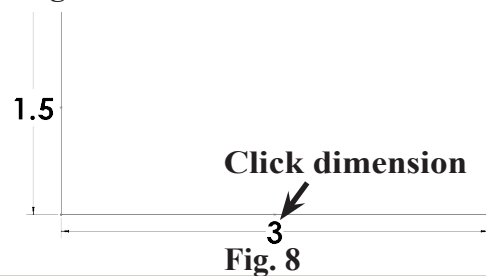
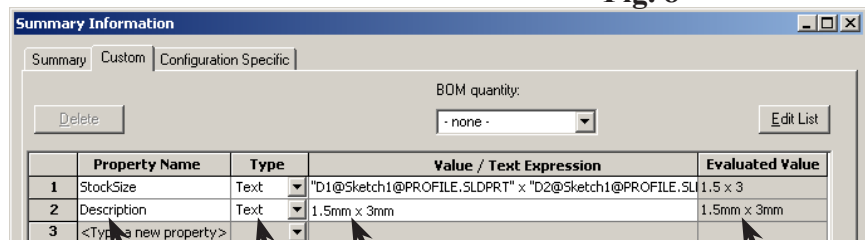


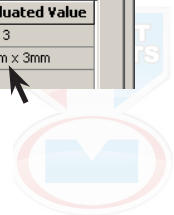
Fig. 8

Step 4. Save. Use **Ctrl-S**.

click **OK**.



Key-in Select Key-in Fig. 9



E. Save as "1.5 X 3" Library Feature Part in Sub-folders.

Step 1. Click Sketch1 in the Feature Manager to select the sketch, Fig. 10.
The Sketch must be selected when you save as Lib Feat.

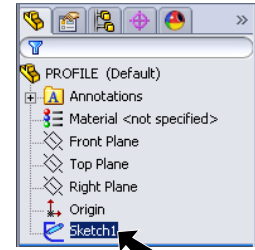


Fig. 10

Step 2. Click File Menu > Save As.

Step 3. In the Save As dialog box:
key-in **1.5 x 3** for file name, Fig. 11
set **Save as Type** to **Lib Feat Part**

right click the Name box and click New > Folder

key-in **My Weldments** for folder name, Fig. 12
double click **My Weldments** folder, Fig. 13

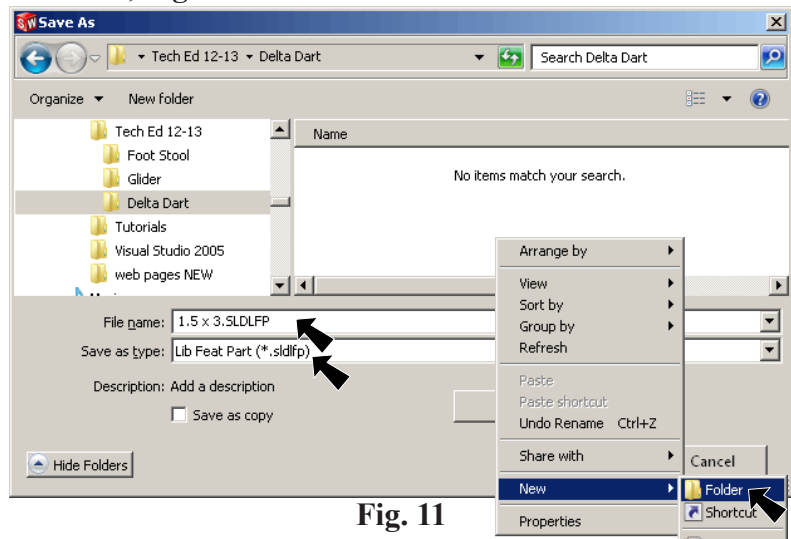


Fig. 11

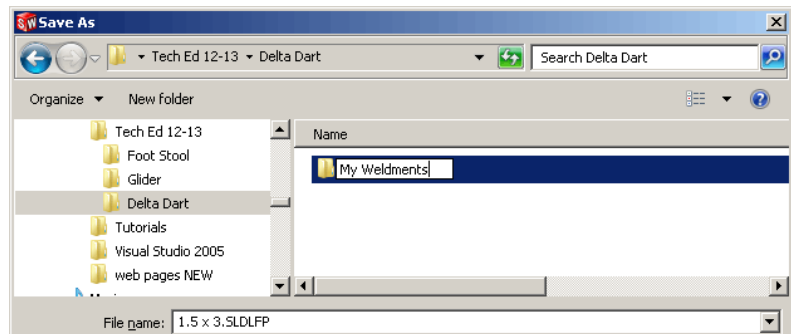


Fig. 12

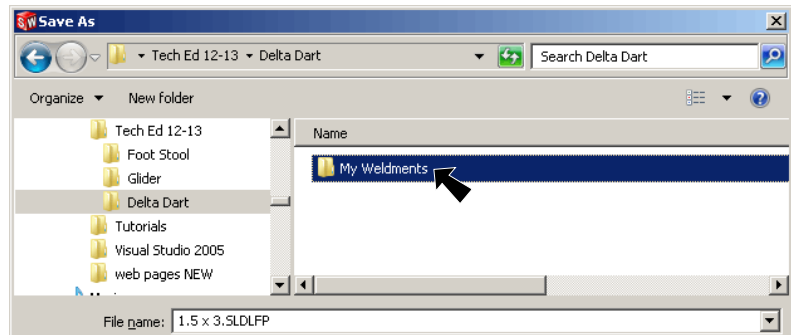


Fig. 13

Step 4. **Right click** the Name box and click New > Folder

key-in **My Profiles** for folder name, **Fig. 14**

double click My Profiles folder

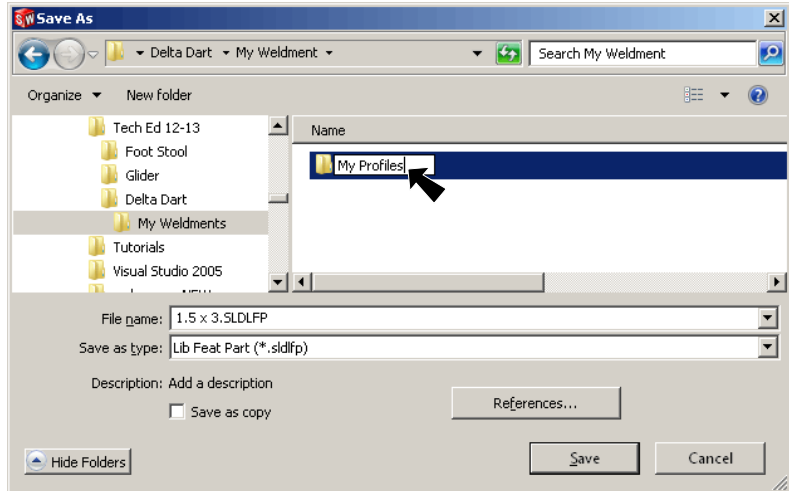


Fig. 14

Step 5. **Right click** the Name box and click New > Folder

key-in **Balsa** for folder name, **Fig. 15**

double click Balsa folder

Step 6. Confirm folders: We just created 3 subfolders, **Fig. 16**
My Weldments
My Profiles
Balsa

click Save, Fig. 16.

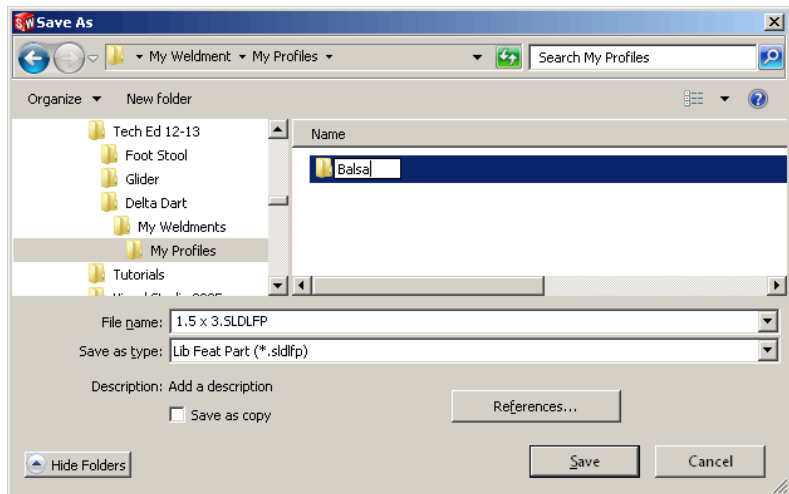


Fig. 15

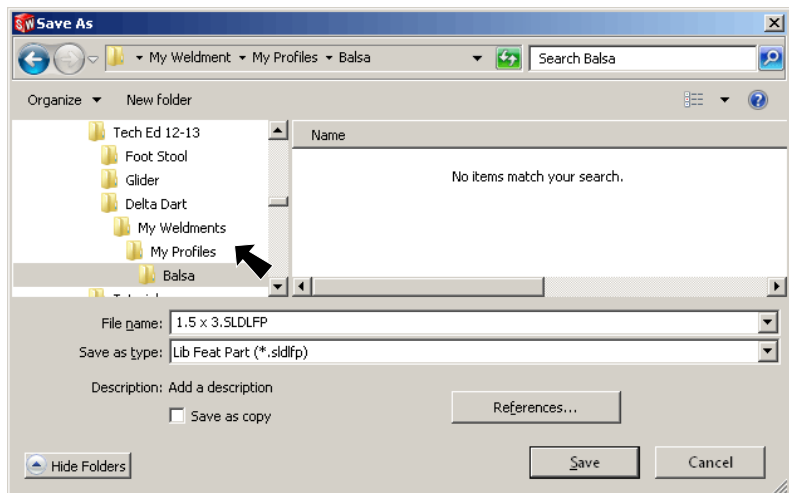


Fig. 16

F. Custom Profile File Location.

Step 1. Click Tools Menu > Options.

Step 2. In the System Options dialog box,
select **File Location**
under **Show folders for:**
select **Weldment Profiles**.

If you **have** permissions/rights to your SolidWorks install folder continue here:
Note the path to Weldment Profiles.
Click **Cancel** button.
Copy **My Profiles** subfolder you created earlier into the Weldment Profiles folder in SW install directory, **Fig. 18**.

C:\Program Files\SolidWorks Corp\SolidWorks\lang\english\weldment profiles

If you **DO NOT** have permissions/rights to your SolidWorks install folder continue here:
Click **Add** button, **Fig. 17**. **Find and select your My Weldments** folder and click **OK**, **Fig. 19**. Click **OK**, **Fig. 20**.

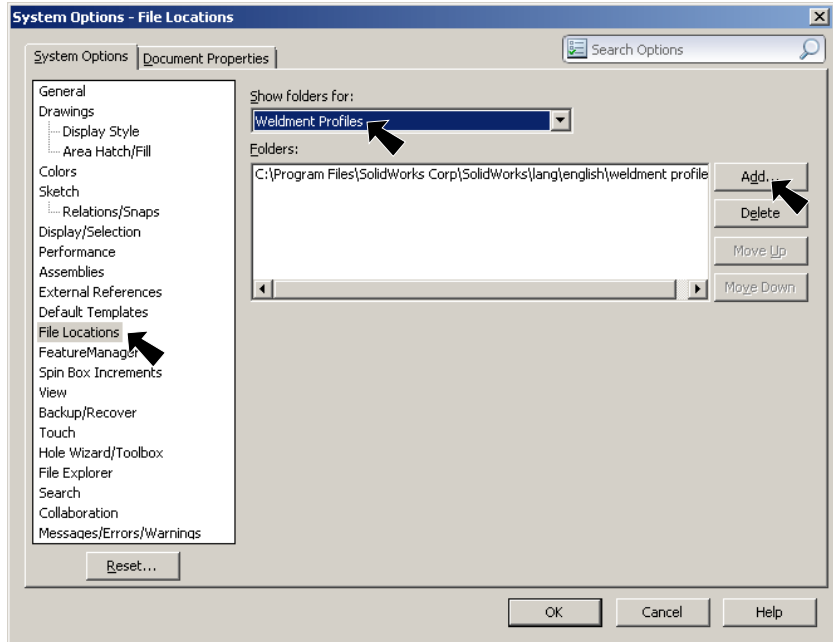


Fig. 17

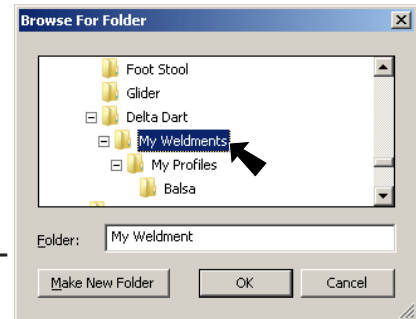


Fig. 19

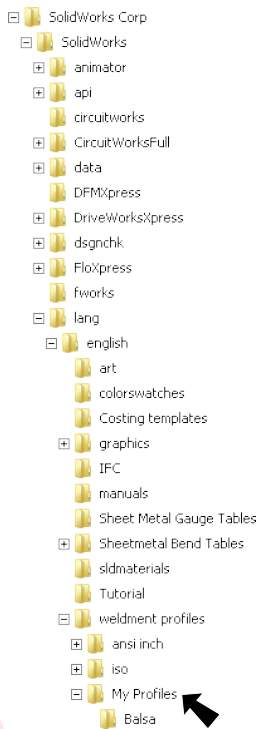


Fig. 18

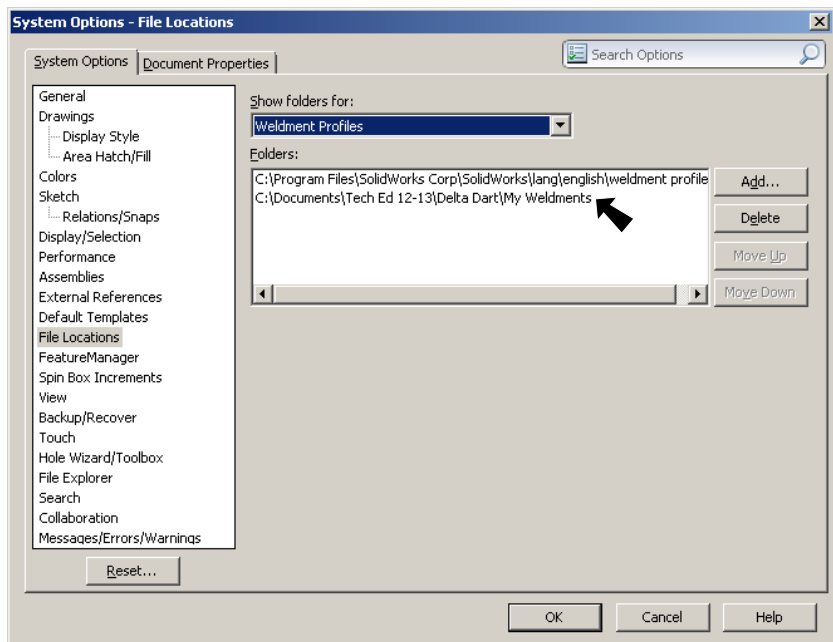


Fig. 20

