

# Big Shot Drawing

## A. Insert Views.


Step 1. Click File Menu > New, click **Drawing** and OK.

Step 2. Click **View Layout**  on the Command Manager toolbar.

Step 3. Click **Model View**  on the View Layout toolbar.

Step 4. Click **Browse** in the Property Manager.

Step 5. Select your **Big Shot Assembly** file and click Open.

Step 6. In the Property Manager:  
under Orientation  
click **Right**   
check **Preview**  
under Scale  
select **Use custom scale**  
set scale **1:2**, Fig. 1.

Step 7. Move the cursor into the graphics area. Align the left edge of the preview with the left border line and top of the title block. Click to place as shown in Fig. 2.

Step 8. **Move cursor straight up**. Center preview between the front view you just placed and top border line. Click to place the top view as shown in Fig. 3.

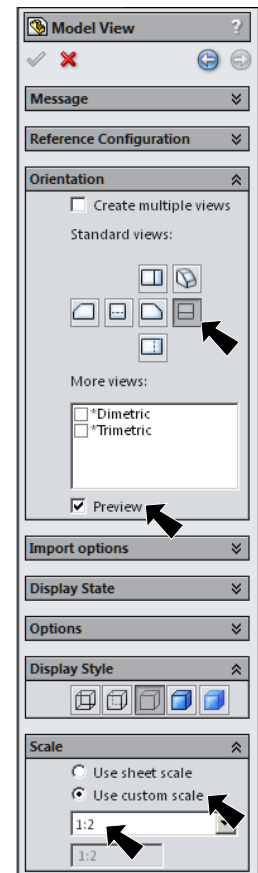
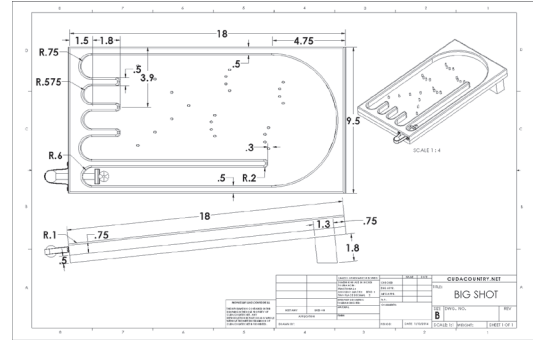


Fig. 1

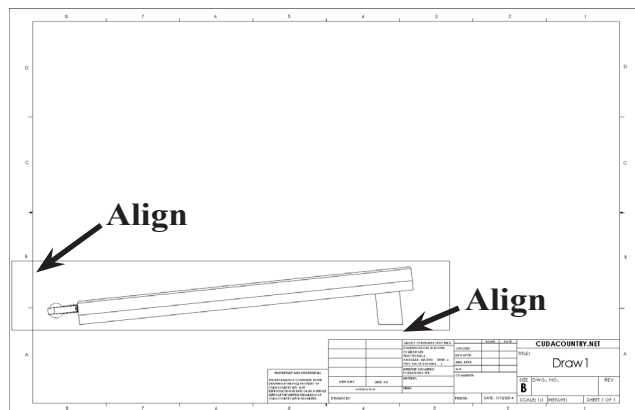


Fig. 2

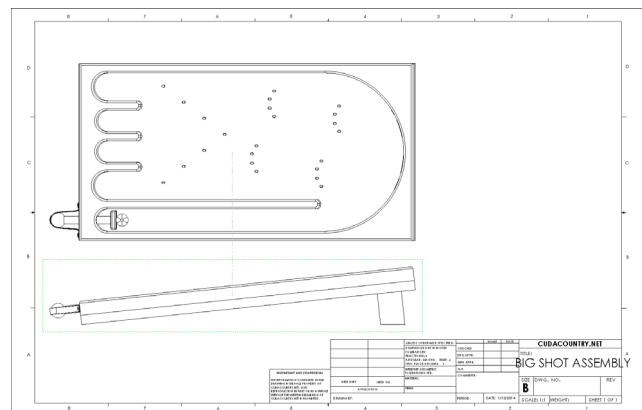
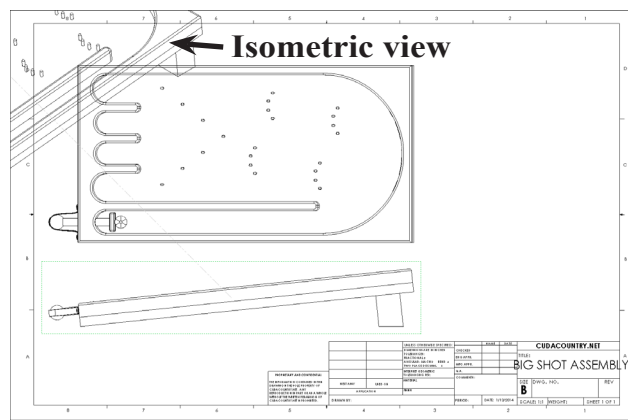


Fig. 3

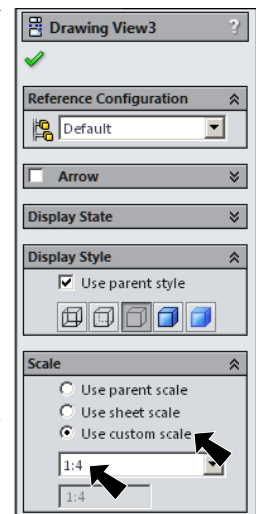
Step 9. Move the cursor to the top left corner of the drawing and click to place the Isometric view, **Fig. 4**.




**Fig. 4**


Step 10. Click OK  in the Property Manager.

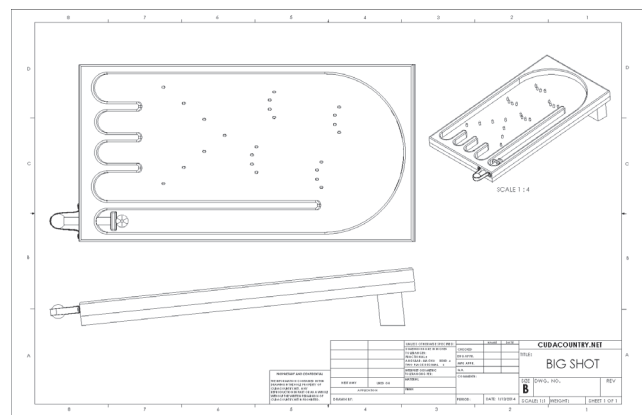
Step 11. Click the Isometric view to select it, **Fig. 4**.



**Fig. 5**

Step 12. In the Property Manager:  
under Scale  
select **Use custom scale**  
set scale **1:4**, **Fig. 5**  
click OK 

Step 13. Grab any geometry of the Isometric view and move view to space right of Top view, **Fig. 6**. Click OK  in the Property Manager.



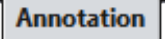
**Fig. 6**

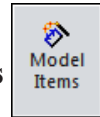
## **B. Save as "BIG SHOT".**

Step 1. Click File Menu > Save As.

Step 2. Key-in **BIG SHOT** for the filename and press ENTER.

## C. Display Dimensions.

Step 1. Click **Annotation**  on the Command Manager toolbar.

Step 2. Click **Model Items**  on the Annotation toolbar.

Step 3. In the Property Manager:  
 under Source: **Fig. 7**  
 select **Selected feature**  
 under Dimensions

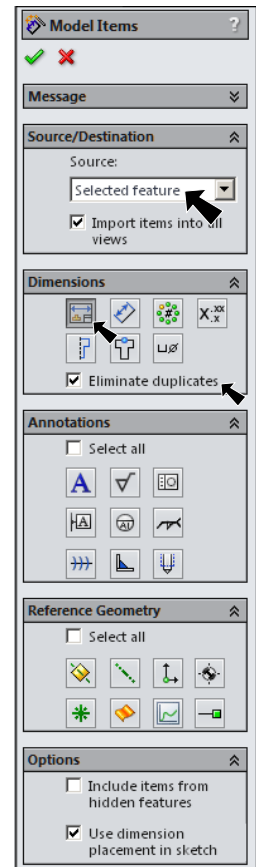
select **Marked for drawing**   
 check **Eliminate duplicates**

in the graphics area click **Leg in Right view and Top in Top view**, **Fig. 8**.

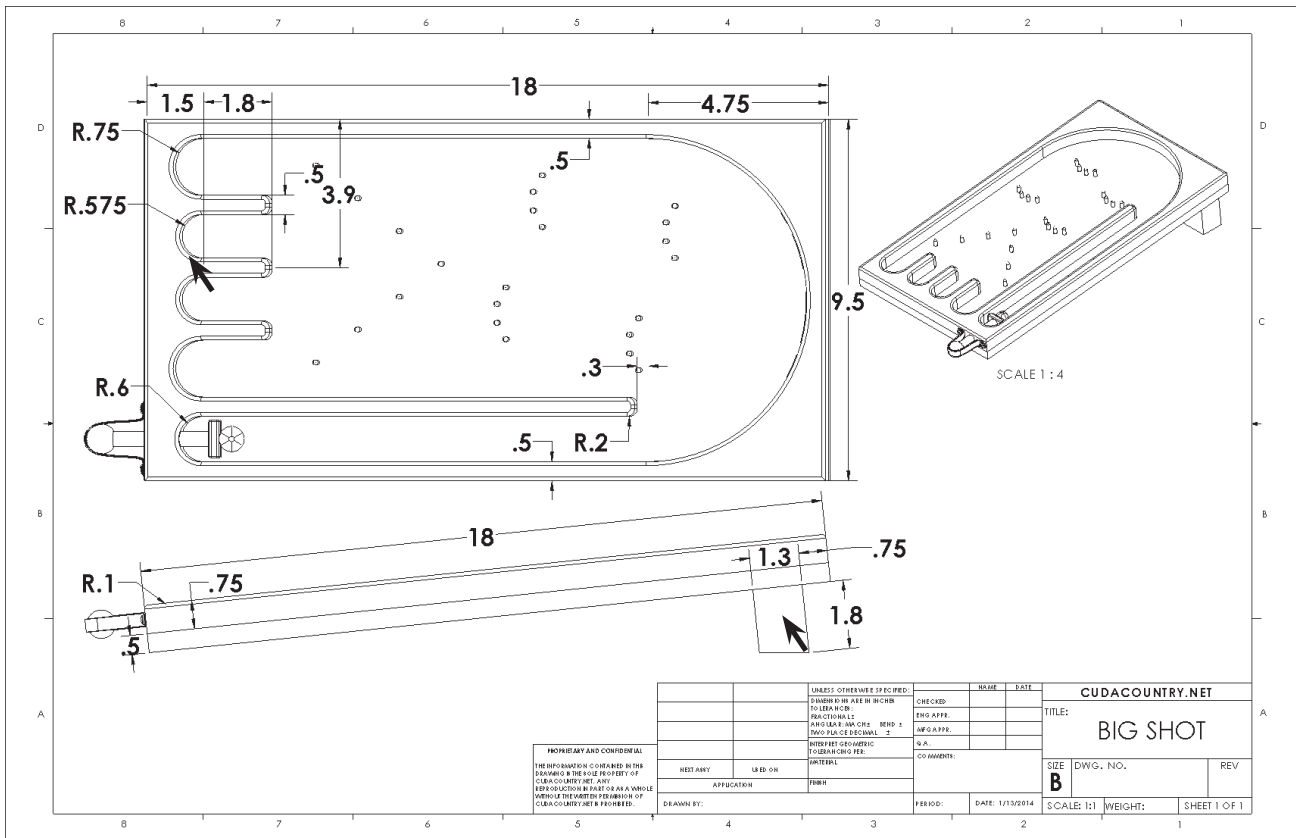
click OK .

Step 4. Arrange the dimensions as shown in **Fig. 8**. You can add more dimension using Smart Dimension. To hide a dimension such as the duplicate 9.5, right click and select Hide from menu. **You can only place dimensions here- you can not change dimensions.**

Step 5. Save. Use **Ctrl-S**.




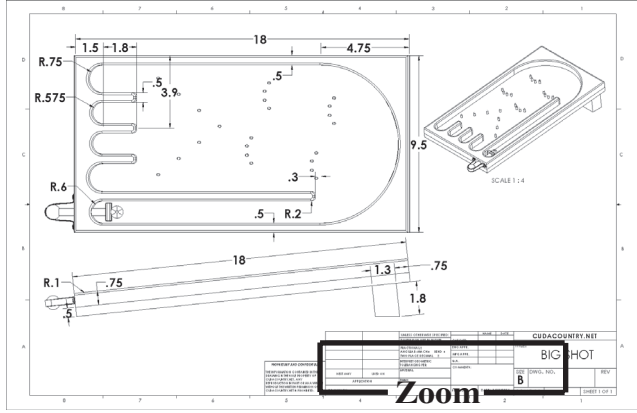
**Fig. 7**



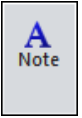
**Fig. 8**

## D. Add Your Name and Period to Title Block.

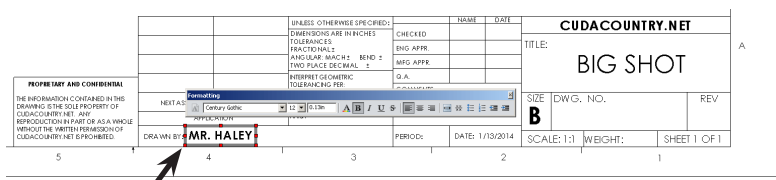
Step 1. Use the **Zoom to Area**  in the View toolbar to drag a zoom window around the **DRAWN BY** and **PERIOD** in the title block, **Fig. 9**.



**Fig. 9**

Step 2. Click **Note**  on the Annotation toolbar.

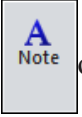
Step 3. Click just to the right of **DRAWN BY**;, **Fig. 10**.



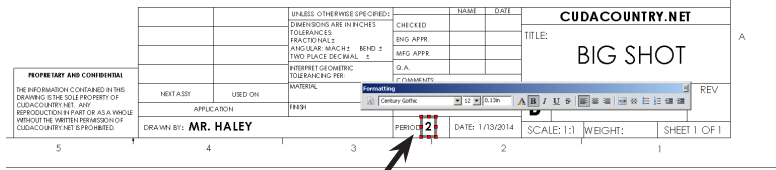
**Fig. 10**

Step 4. Lock the Caps and key-in **your first and last names**, **Fig. 10**.

Step 5. Click **OK**  in the Property Manager.

Step 6. Click **Note**  on the Annotation toolbar.

Step 7. Click just to the right of **PERIOD**;, click and key-in **your Period number**, **Fig. 11**.



**Fig. 11**

Step 8. Click **OK**  in the Property Manager.

Step 9. Save. Use **Ctrl-S**.