

**A. Insert Views.**

Step 1. Click File Menu > New, click **Drawing Metric** and OK.

Step 2. Click **View Layout**  on the Command Manager toolbar.

Step 3. Click **Model View**  on the View Layout toolbar.

Step 4. Click **Browse** in the Property Manager.

Step 5. Select your **JSS Assembly** file and click Open.

Step 6. In the Property Manager:  
under Orientation

click **Right** 

check **Preview**

under Scale

select **Use custom scale**

set scale **1:1**, Fig. 1.

Step 7. Move the cursor into the graphics area. Align the right edge of the preview with the right border line and top of the title block. Click to place as shown in Fig. 2.

Step 8. **Move cursor straight up.** Center preview between the Side view you just placed and top border line. Click to place the Top view as shown in Fig. 3.

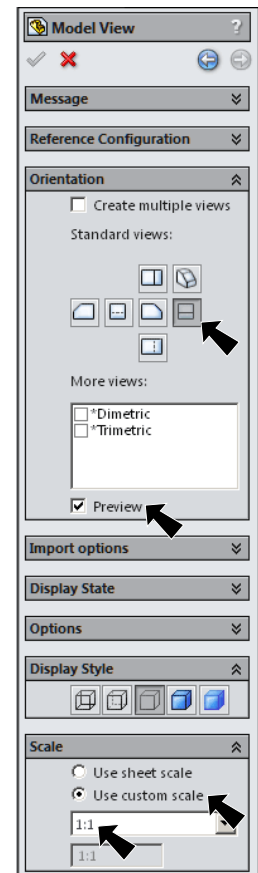
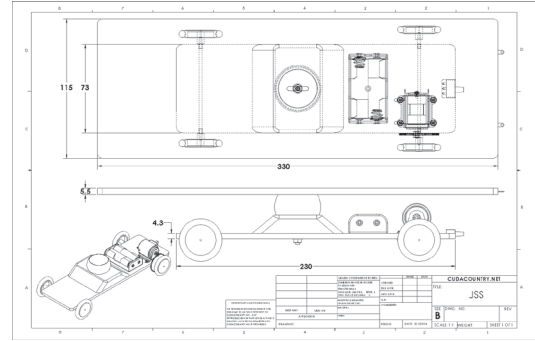


Fig. 1

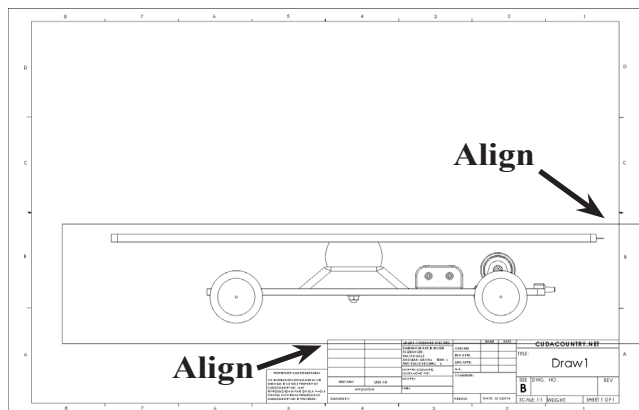


Fig. 2

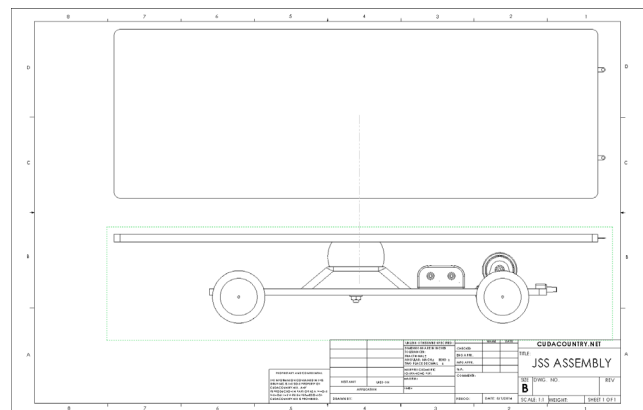
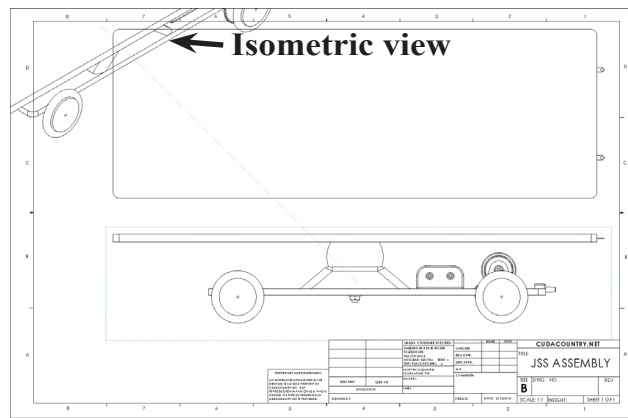


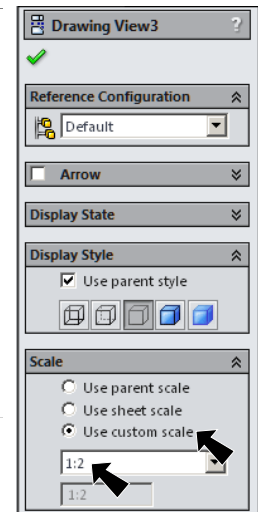
Fig. 3

Step 9. Move the cursor to the top left corner of the drawing and click to place the Isometric view, **Fig. 4**.




**Fig. 4**

Step 10. Click OK  in the Property Manager.

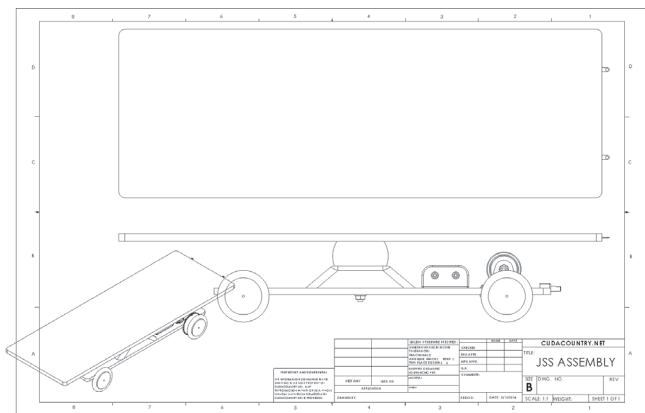


**Fig. 5**

Step 11. Click the Isometric view to select it, **Fig. 4**.

Step 12. In the Property Manager:  
 under Scale  
 select **Use custom scale**  
 set scale **1:2**, **Fig. 5**  
 click OK 

Step 13. Grab any geometry of the Isometric view and move view to space left of Side view, **Fig. 6**.



**Fig. 6**

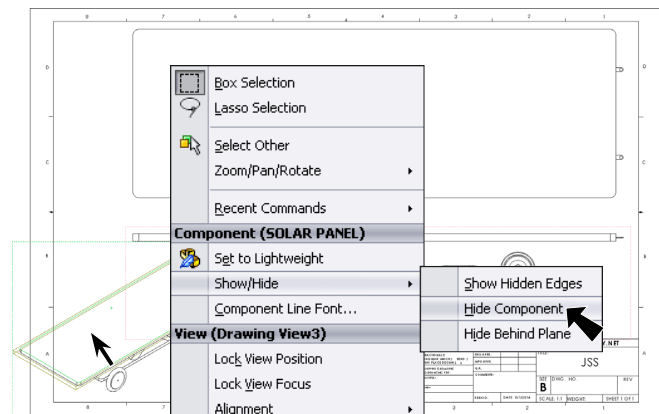
## B. Save as "JSS".

Step 1. Click File Menu > Save As.

Step 2. Key-in **JSS** for the filename and press ENTER.

## C. Hide Solar Panel.


Step 1. **Hide Solar Panel in Isometric view.**  
 To Hide, **right click** Solar Panel in Isometric view and click Show/Hide > Hide Component, **Fig. 7**.

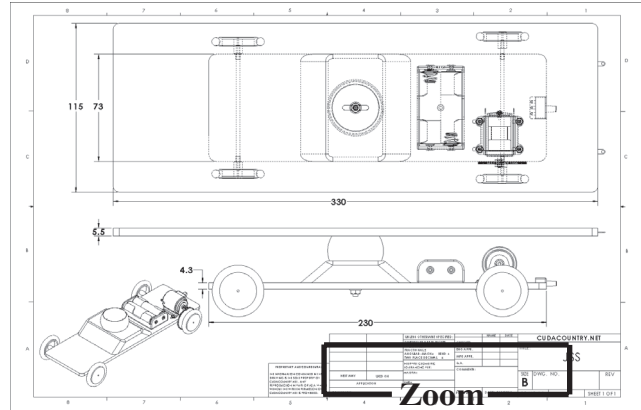


**Fig. 7**

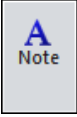


## F. Add Your Name and Period to Title Block.

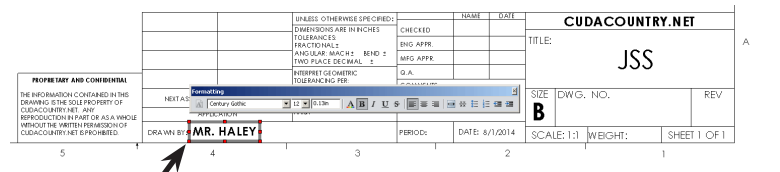
Step 1. Use the **Zoom to Area**  in the View toolbar to drag a zoom window around the **DRAWN BY** and **PERIOD** in the title block, **Fig. 11**.



**Fig. 11**

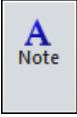
Step 2. Click **Note**  on the Annotation toolbar.

Step 3. Click just to the right of **DRAWN BY**;, **Fig. 12**.

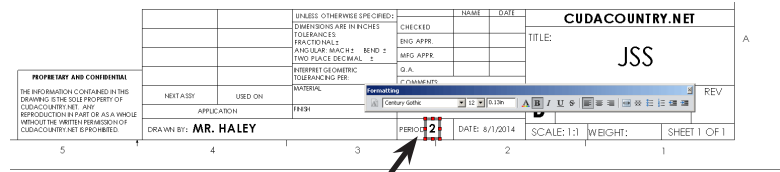


**Fig. 12**

Step 5. Click **OK**  in the Property Manager.

Step 6. Click **Note**  on the Annotation toolbar.

Step 7. Click just to the right of **PERIOD**;, click and key-in your **Period number**, **Fig. 13**.



**Fig. 13**

Step 8. Click **OK**  in the Property Manager.

Step 9. Save. Use **Ctrl-S**.