



Big Shot Dowel Pin



A. Dowel Pin.

Step 1. Click File Menu > New, click **Part** and OK.

Step 2. Click **Right Plane**  in the Feature Manager and click **Sketch**  on the Context toolbar, **Fig. 1**.

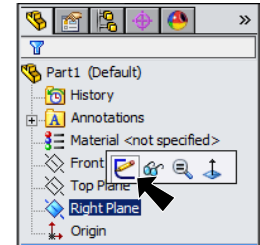



Fig. 1

Step 3. Click **Circle**  (S) on the Sketch toolbar.

Step 4. Draw a circle starting at the Origin , **Fig. 2**.

Step 5. Click **Smart Dimension**  (S) on the Sketch toolbar.

Step 6. Dimension circle **diameter .125**, **Fig. 3**.

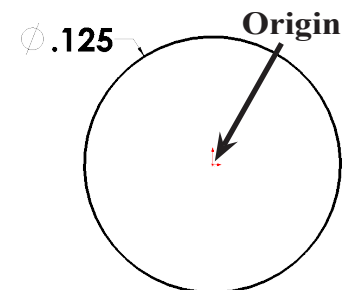
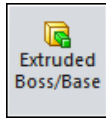




Fig. 2

Step 7. Click **Features**  on the Command Manager toolbar.

Step 8. Click **Extruded Boss/Base**  on the Features toolbar.

Step 9. In the Property Manager set:
under Direction 1, **Fig. 3**

Depth  **.7**
click OK , **Fig. 4**.

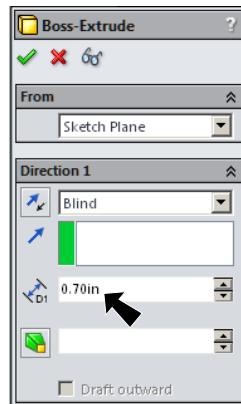



Fig. 3

Step 10. Click **Zoom to Fit**  (F) on the View toolbar.

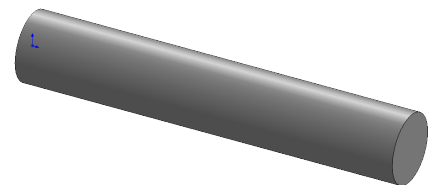


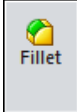
Fig. 4

B. Save as "DOWEL PIN".

Step 1. Click File Menu > Save As.

Step 2. Key-in **DOWEL PIN** for the filename and press ENTER.

C. Fillet.

Step 1. Click **Fillet**  on the Features toolbar.

Step 2. In the Fillet Property Manager:
select **FilletXpert**, Fig. 5

Radius  **.06**
select **Full preview**

click **left edge**, Fig. 6

click **OK** .

Step 3. Save. Use **Ctrl-S**.

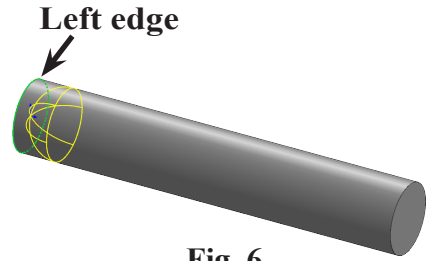
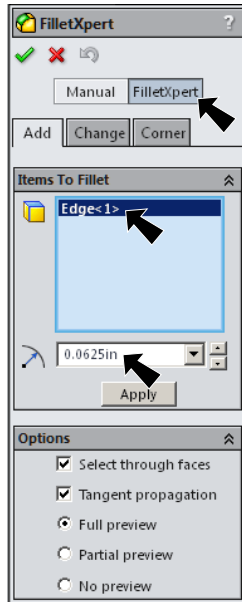


Fig. 6

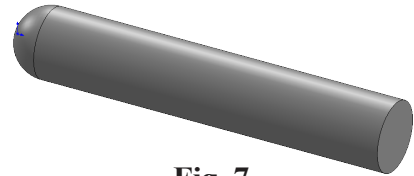



Fig. 7

D. Material Maple.

Step 1. **Right click** **Material**  in the Feature Manager and click **Edit Material**, Fig. 8.

Step 2. Expand **Woods** in the material tree and click **Maple**. Click **Apply** and **Close**, Fig. 9.

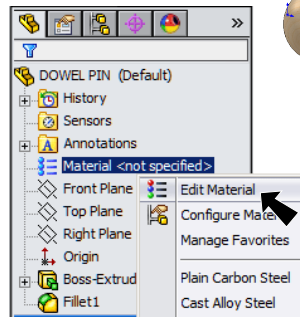


Fig. 5



Fig. 9

E. Rotate Mapping.

Step 1. Click **PhotoView 360 Menu > Edit Appearance**.

Step 2. In **Appearances**:

click **Mapping tab** , Fig. 10

Rotation 90

click **OK** , Fig. 11.

Step 3. Save. Use **Ctrl-S**.



Fig. 11

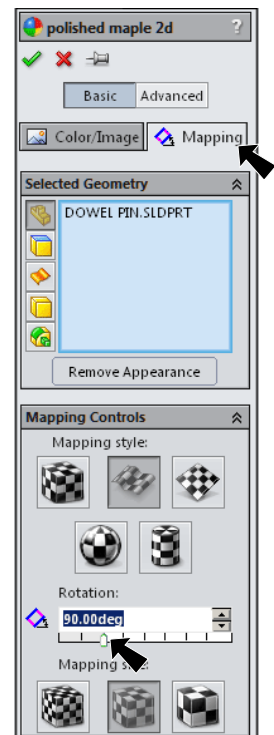


Fig. 10