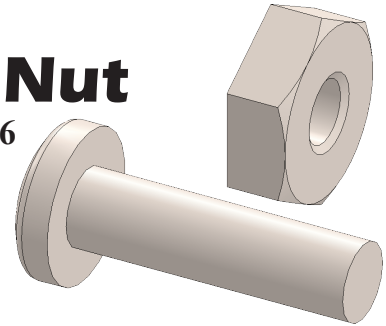


# Machine Screw and Nut

Machine Screw #2-56 .3125 Nut #2-56



## A. Machine Screw #2-56 x .3125.

Step 1. Click the **Design Library** tab  in the Task Pane, **Fig. 1**.

Step 2. Expand the **Toolbox**  **Toolbox**

Expand **ANSI Inch** folder  **ANSI Inch**

Expand **Bolts and Screws** folder  **Bolts and Screws**

Click **Machine Screws** folder  **Machine Screw**

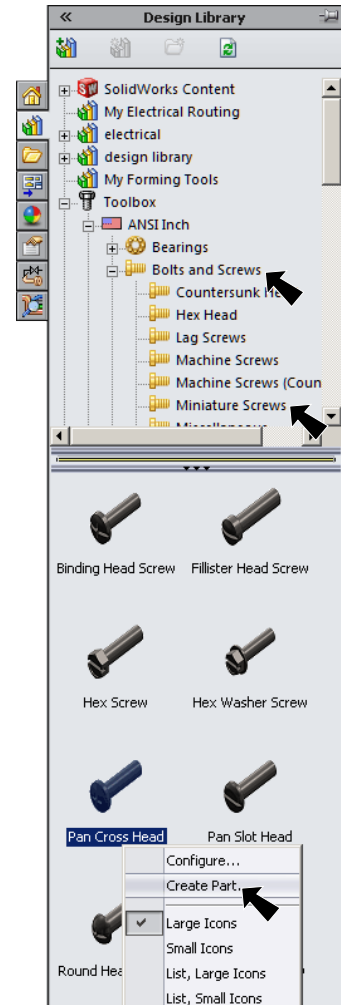


Fig. 1

Step 3. In the lower pane, **right click Pan Cross Head** and click **Create Part**, **Fig. 1**.

Step 4. In the Property Manager set:  
under Properties, **Fig. 2**

**Size #2-56**

**Length .3125**

under File Name

note the file name:

**CR-PHMS .086-56 X .3125...**

click **OK** .

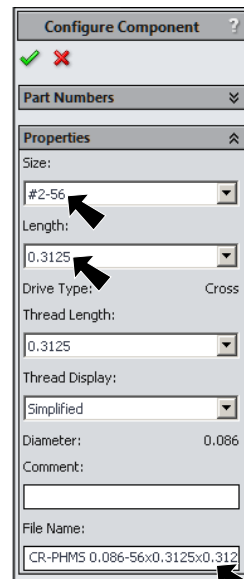


Fig. 2

## B. Material Plain Carbon Steel.

Step 1. **Right click Material**  in the Feature Manager and click **Edit Material**, **Fig. 4**.

Step 2. **Expand Steel** in the material tree and select **Plain Carbon Steel**. Click **Apply** and **Close**.

## C. Save as.

Step 1. Click File Menu > Save As.

Step 2. Redirect file path to your **JSS folder** in your Tech Ed 14-15 folder and click Save.

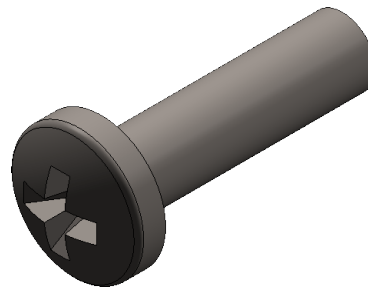


Fig. 3

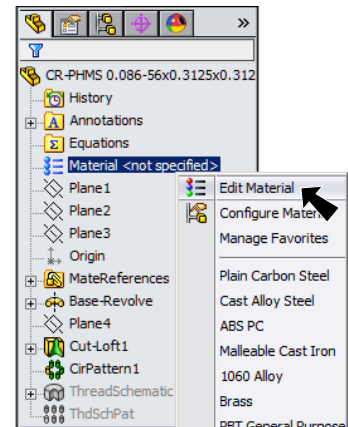


Fig. 4

## D. Nut #2-56.

Step 1. Click the **Design Library** tab  in the Task Pane, **Fig. 5**.

Step 2. In the **Toolbox**  **Toolbox**

Expand **ANSI Inch** folder  **ANSI Inch**


Expand **Nuts** folder  **Nuts**

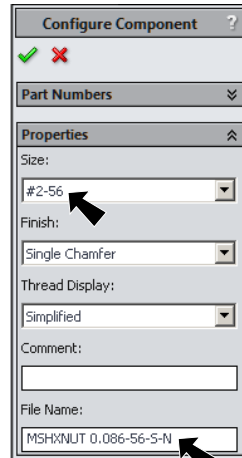
Click **Machine Screws** folder

 **Machine Screws**

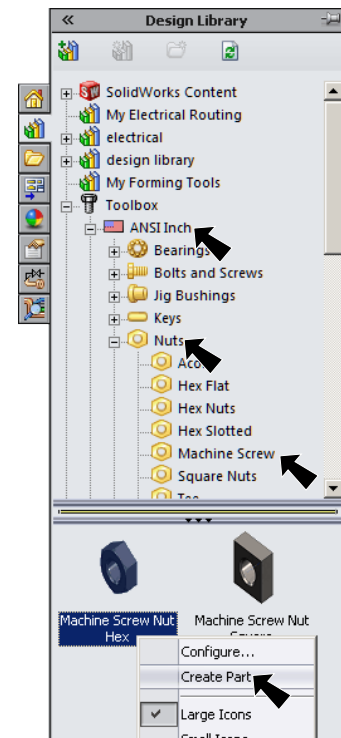
Step 3. In the lower pane, **right click Machine Screw Nut Hex** and click **Create Part**, **Fig. 5**.

Step 4. In the Property Manager set:  
under Properties, **Fig. 6**  
**Size #2-56**

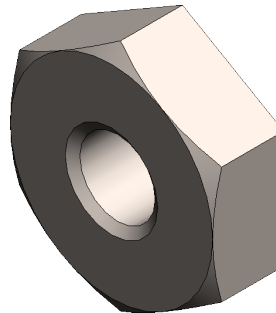
under File Name  
note the file name  
**MSHXNUT .086-56-S-N**  
click OK .



**Fig. 6**



**Fig. 5**

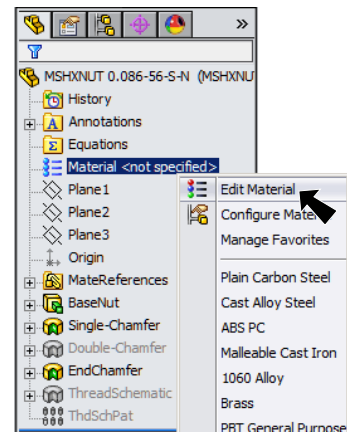


**Fig. 7**

## E. Material Plain Carbon Steel.

Step 1. **Right click Material**  in the Feature Manager and click **Edit Material**, **Fig. 7**.

Step 2. **Expand Steel** in the material tree and select **Plain Carbon Steel**. Click **Apply** and **Close**.



**Fig. 8**

## F. Save as.

Step 1. Click File Menu > Save As.

Step 2. Redirect file path to your **JSS folder** in your Tech Ed 14-15 folder and click Save.