

## A. Enable Toolbox Browser.

Step 1. If necessary, open your **Big Shot Assembly** file.

Step 2. If necessary, turn on Toolbox Browser, click the flyout of Options



on the Standard toolbar and click **Add-Ins**.

Step 3. In the dialog box find **SolidWorks Toolbox Browser** and place a check in the check box under **Active Add-Ins** and **Start-Up**. Click OK, **Fig. 1**.

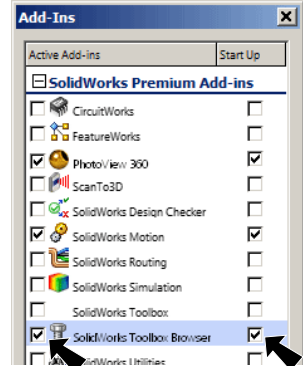



Fig. 1


## B. Design Library.

Step 1. Click the **Design Library** tab  in the Task Pane (right side of graphics area), **Fig. 2**.

Step 2. Expand the **Toolbox**  **Toolbox**

Expand **ANSI Inch** folder  **ANSI Inch**

Expand **Bolts and Screws** folder

 **Bolts and Screws**

Click **Machine Screws** folder

 **Machine Screws**

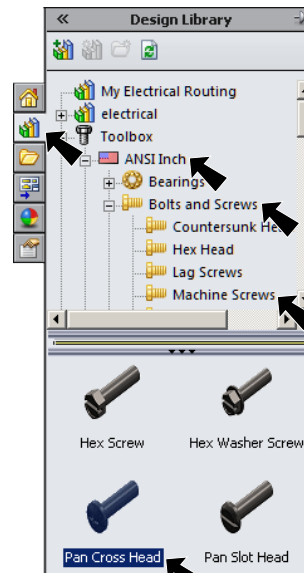



Fig. 2

Step 3. In the lower pane, click the **Pan Cross Head** screw, **Fig. 2**. Drag screw towards a hole in Elastic Strip. Move the **tip of your cursor to the edge of a hole**, **Fig. 3**. When the screw snaps into place and cursor changes to  concentric and coincident mate, release the screw.

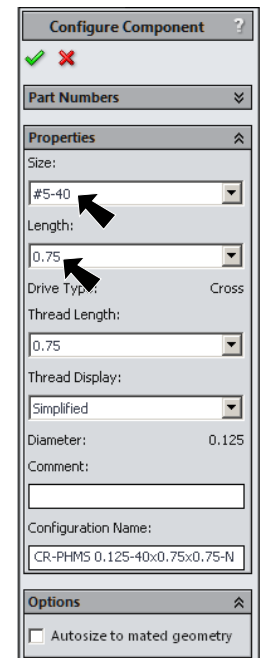


Fig. 4

Step 4. In the Property Manager set:

**Size #5-40**

**Length .75, Fig. 4**

click OK .

**Release screw when cursor changes to**



Step 5. Add screw to other hole, **Fig. 3**. Click **Cancel**  when done.

Step 6. Save. Use **Ctrl-S**.

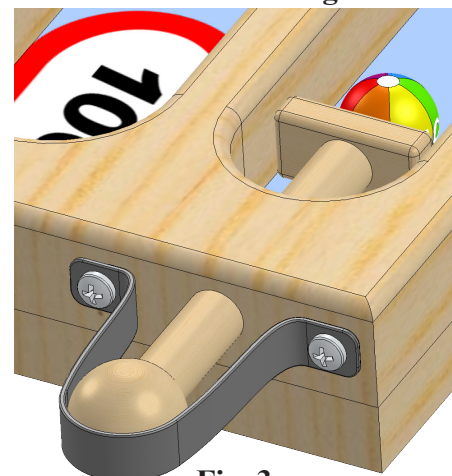


Fig. 3