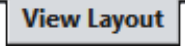
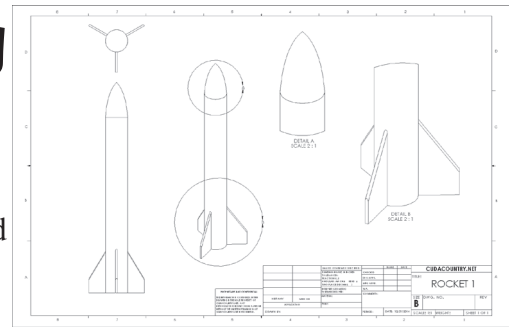
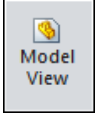


A. Insert Front and Top Views.

Step 1. Click File Menu > New, click **Drawing** and OK.

Step 2. Click **View Layout**  on the Command Manager toolbar.



Step 3. Click **Model View**  on the View Layout toolbar.

Step 4. Click **Browse** in the Property Manager.

Step 5. Select your **ROCKET 1 ASSEMBLY** file and click Open.

Step 6. In the Property Manager under Orientation, **Fig. 1**

click **Front** 

check **Preview**

under Scale

select **Use custom scale**

Scale 1:1

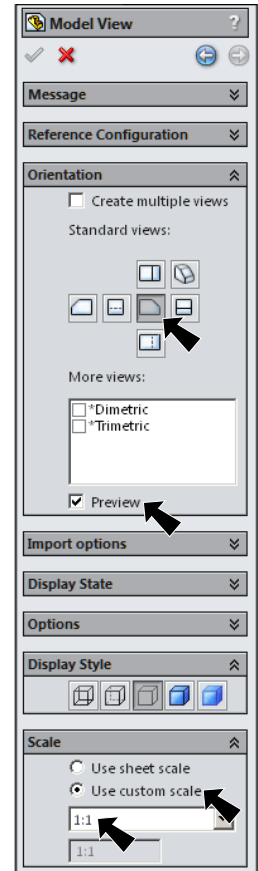


Fig. 1

Step 7. Move the cursor into the graphic area. Align the bottom of the preview with the bottom of the title block. Click to place the Front view, **Fig. 2**.

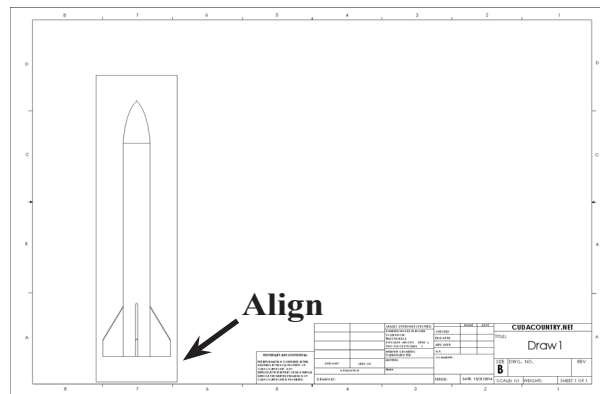


Fig. 2

Step 8. **Move the cursor straight up.** Center the view between the Front view you just placed and the top border line. Click to place the Top view, **Fig. 3**.

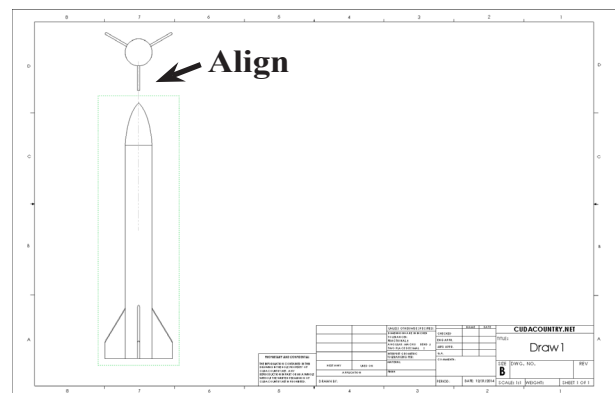


Fig. 3

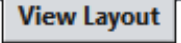
Step 9. Click OK  in the Property Manager.

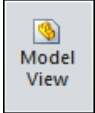
B. Save as "ROCKET 1".


Step 1. Click File Menu > Save As.

Step 2. Key-in **ROCKET 1** for the filename and press ENTER.

C. Insert Trimetric View.

Step 1. Click **View Layout**  on the Command Manager toolbar.

Step 2. Click **Model View**  on the View Layout toolbar.

Step 3. Click **Next**  in the Property Manager, **Fig. 4**.

Step 4. In the Property Manager:
 under Orientation, **Fig. 4**
 check **Trimetric**.
 under Scale
 select **Use custom scale 1:1**.

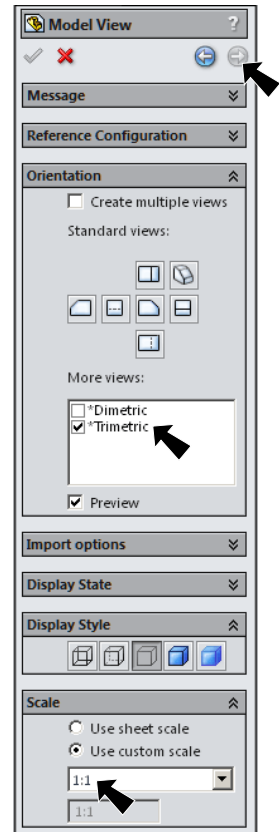


Fig. 4

Step 5. Move the cursor into the graphic area and click to place the Trimetric view, **Fig. 5**.

Step 6. Click **OK**  in the Property Manager.

Step 7. Save. Use **Ctrl-S**.

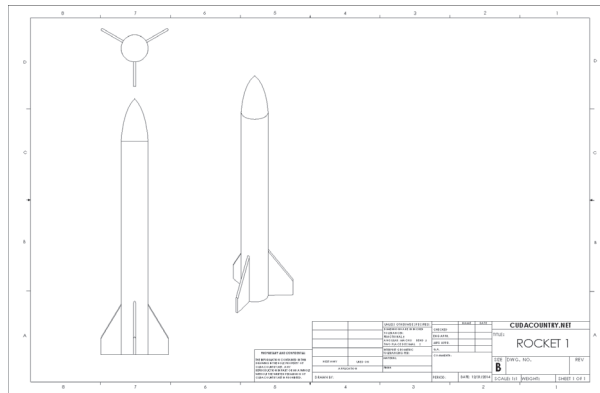



Fig. 5

D. Insert Detail View of Nose Cone.

Step 1. Click **Detail View**  on the View Layout toolbar.

Step 2. Draw a detail view circle starting from the middle of the nose cone in the Trimetric view. Surround the nose cone with the circle and click, **Fig. 6**. Then, place the detail view as positioned in **Fig. 7**.

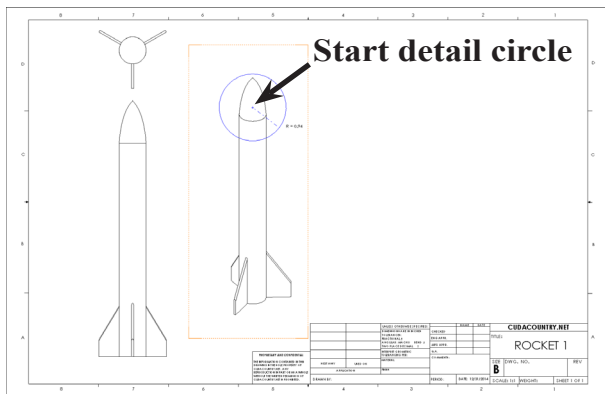


Fig. 6

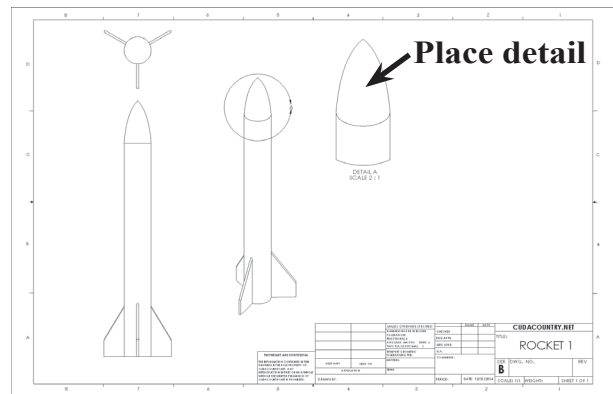
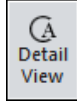


Fig. 7

E. Insert Detail View of Fins.

Step 1. Click **Detail View** on the View Layout toolbar.



Step 2. Draw a detail view circle starting from the middle of the fins in the Trimetric view. Surround the nose cone with the circle and click, **Fig. 8**. Place the detail view as in **Fig. 9**.

Step 3. Drag the Detail notes up close to the Detail views, **Fig. 10**.

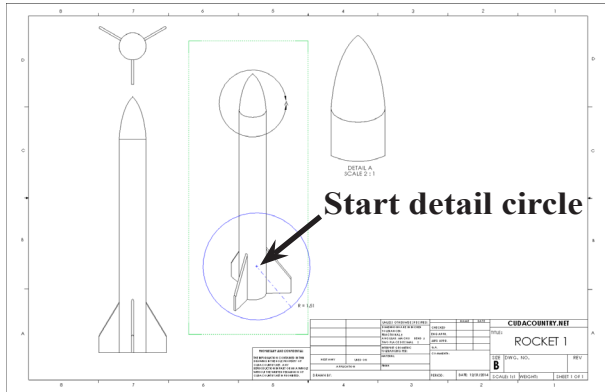


Fig. 8

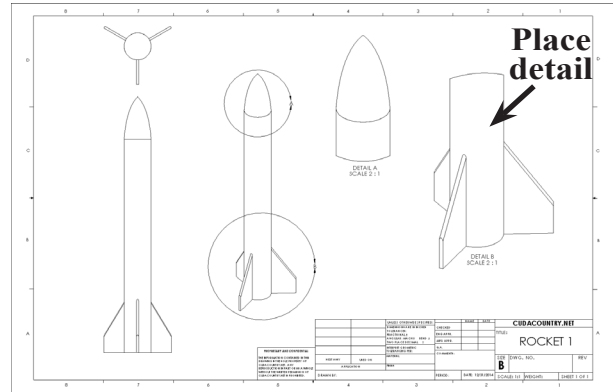


Fig. 9

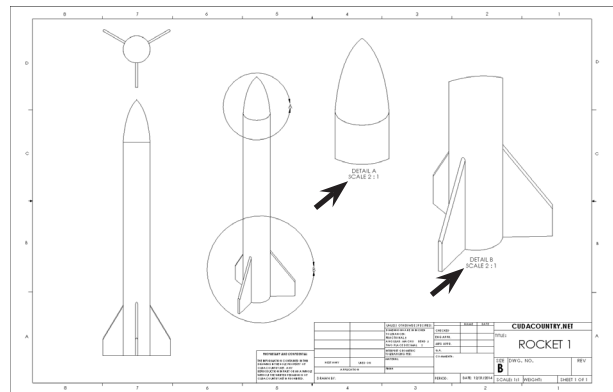



Fig. 10

F. Add Your Name and Period to Title Block.

Step 1. Use the **Zoom to Area**  in the View toolbar to drag a zoom window around the **DRAWN BY** and **PERIOD** in the title block, **Fig. 11**.

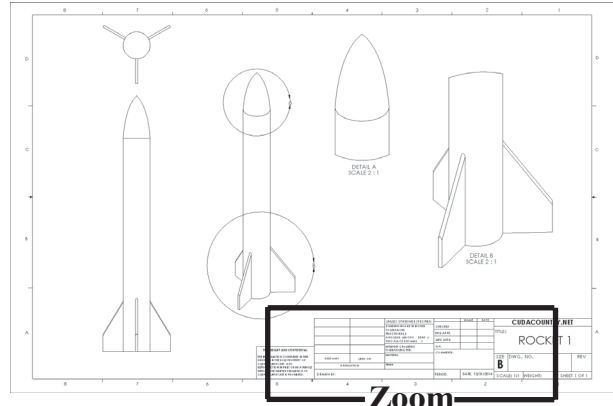
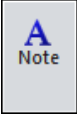


Fig. 11

Step 2. Click **Note**  on the Annotation toolbar.

Step 3. Click just to the right of **DRAWN BY**., **Fig. 12**.

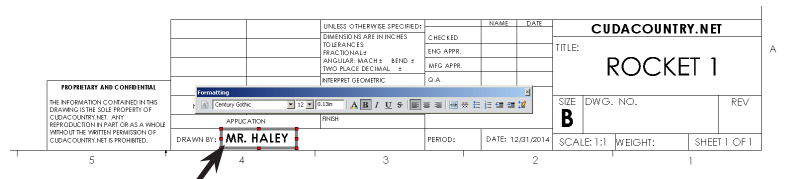


Fig. 12

Step 4. Lock the Caps and key-in **your first and last names**, **Fig. 12**.

Step 5. Click **OK**  in the Property Manager.

Step 6. Click **Note**  on the Annotation toolbar.

Step 7. Click just to the right of **PERIOD**., click and key-in **your Period number**, **Fig. 13**.

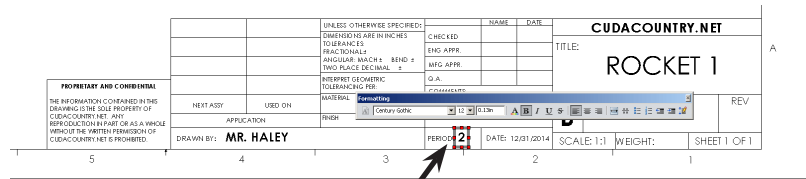


Fig. 13

Step 8. Click **OK**  in the Property Manager.

Step 9. Save. Use **Ctrl-S**.