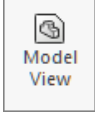


Airplane Drawing

A. Insert Right View.

Step 1. Click File Menu > New, click **Drawing** and OK.

Step 2. Click **Model View**  on the View Layout toolbar.

Step 3. Click **Browse** in the Property Manager.

Step 4. Select your **AIRPLANE ASSEMBLY** file and click Open.

Step 5. In the Property Manager:
under Orientation, **Fig. 1**

click **Right** 

check **Preview**

under Scale

select **Use custom scale**

Scale **1:1**

Step 6. Move the cursor into the graphic area and click to place the right side view as shown in **Fig. 2**. **Align the right edge** of the preview with the right border line and **align wheel next to title block** with the top of the title block.

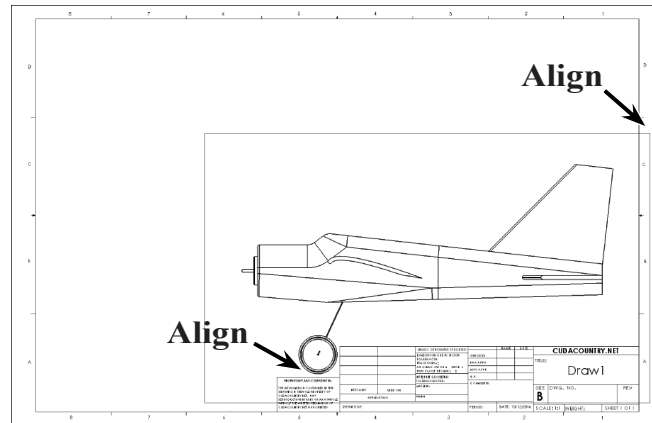


Fig. 2

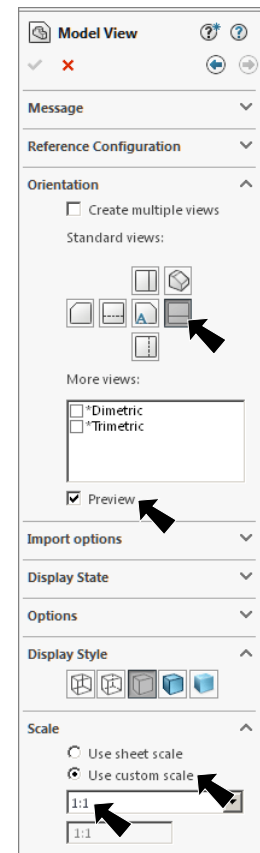


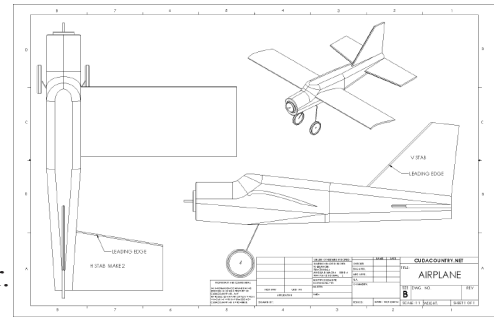
Fig. 1

Step 7. Click OK  in the Property Manager.

B. Save as "AIRPLANE".

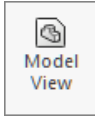
Step 1. Click File Menu > Save As.

Step 2. Key-in **AIRPLANE** for the file name and press ENTER.



C. Insert Top View.

Step 1. Click **View Layout**  on the Command Manager toolbar and **Model View**



on the View Layout toolbar.

Step 2. Click **Next**  in the Property Manager.

Step 3. In the Property Manager under Orientation, **Fig. 3**

click **Top** 
check **Preview**

under **Scale**
click **Use custom scale**
and set scale **1:1**.

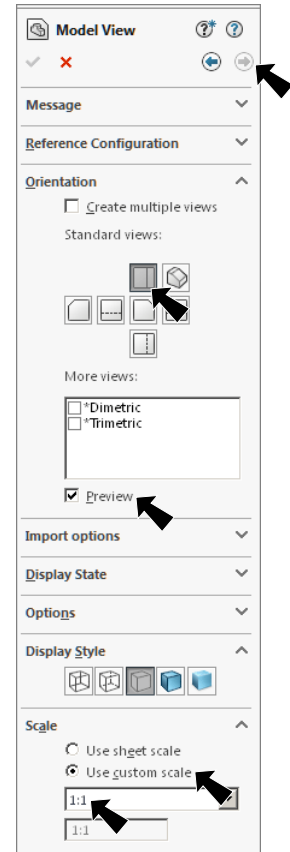


Fig. 3

Step 4. Move the cursor into the graphic area and click to place the top view, **Fig. 4**.

Align the left edge of the wheel preview with the left border line and center fuselage between the top and bottom border lines.

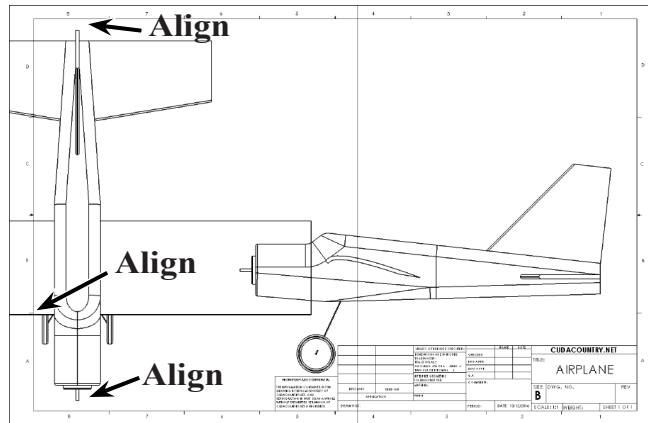


Fig. 4

Step 5. Click **Rotate View**  on the View toolbar.

Step 6. Key-in **180** for the **Drawing view angle** and click **Apply** and **Close**, **Fig. 5** and **Fig. 6**.

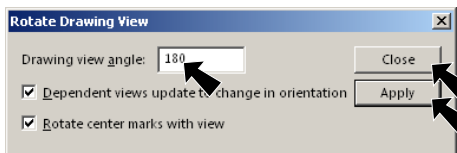


Fig. 5

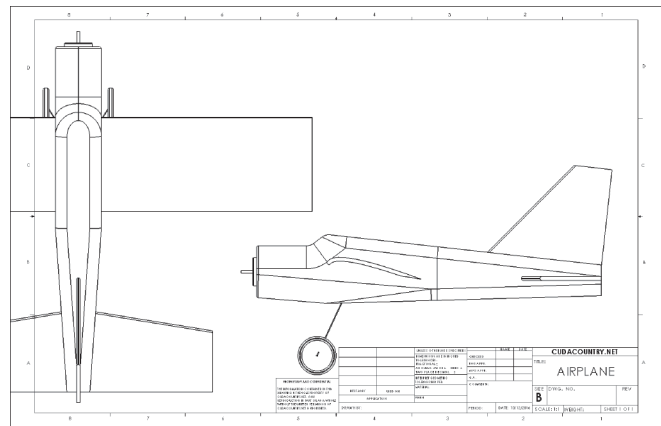


Fig. 6

Step 7. Click **OK**  in the Property Manager.

D. Hide Wing and H Stab.

Step 1. **Right click Wing** that is outside drawing, click **Show/Hide** from menu and click **Hide Component**, Fig. 7.

Step 2. **Right click H Stab** that is outside drawing, click **Show/Hide** from menu and click **Hide Component**, Fig. 8.

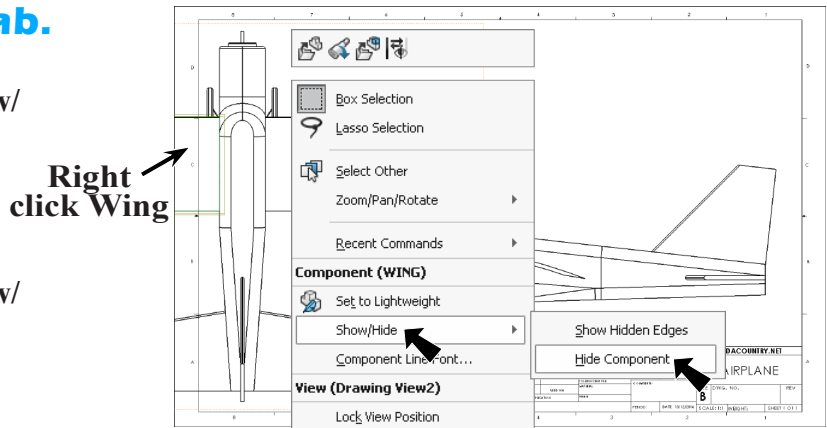


Fig. 7

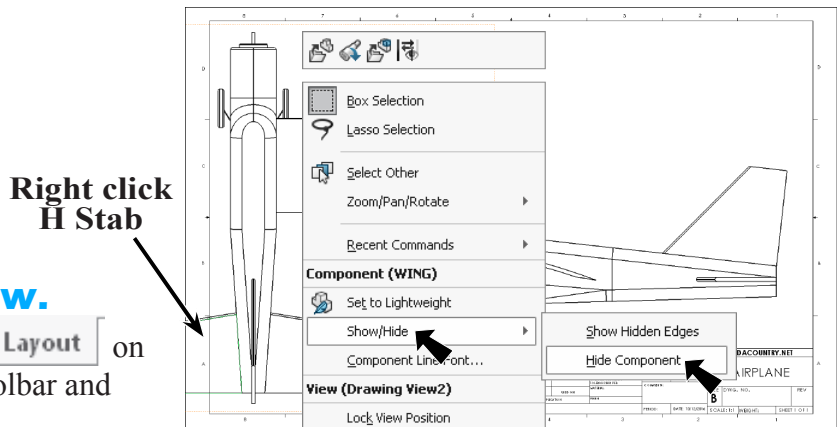


Fig. 8

E. Insert Isometric View.

Step 1. Click **View Layout** on the Command Manager toolbar and

Model View on the View Layout toolbar.

Step 2. Click **Next** in the Property Manager.

Step 3. In the Property Manager under Orientation, Fig. 9

click **Isometric**

check **Preview**

under Scale

click **Use custom scale** and set **scale 1:2**

Step 4. Move the cursor into the graphic area and click to place the Isometric View, Fig. 10.

Step 5. Click **OK** in the Property Manager.

Step 6. Save. Use **Ctrl-S**.

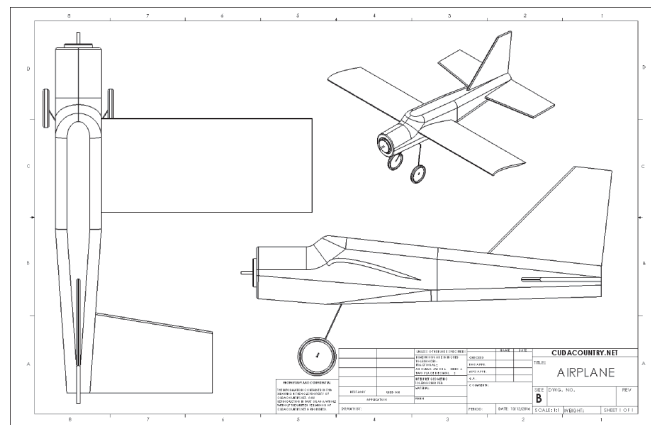


Fig. 10

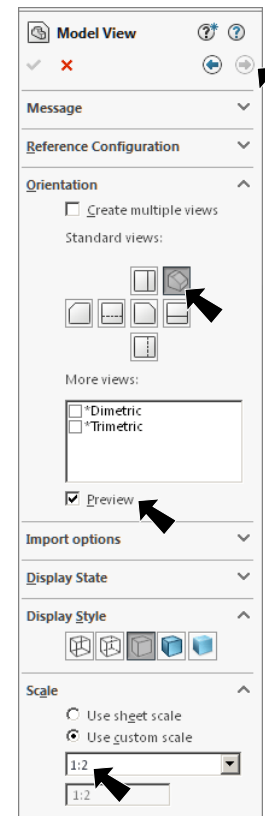
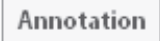
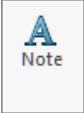




Fig. 9

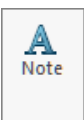
F. Add Leaders and Notes to Stabilizers.

Step 1. Click **Annotation**  on the Command Manager toolbar.



Step 2. Click **Note**  on the Annotation toolbar.

Step 3. In the Note Property Manger:
under Leader, **Fig. 11**

if necessary select **Auto Leader** 
in top view, click the Leading Edge of the **H Stab** and bring the text box **inside** H Stab and click
lock the Caps and key-in:
LEADING EDGE, Fig. 12
click OK  in Property Manager.

Step 4. Click **Note**  on the Annotation toolbar.

Step 5. In the Note Property Manger:
under Leader, **Fig. 13**

select **NO Leader** 
click **inside** H Stab and key-in **H STAB MAKE 2**, Fig. 14
click OK  in Property Manager.

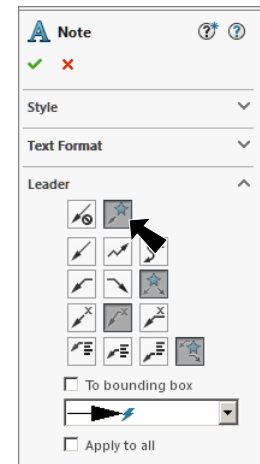


Fig. 11

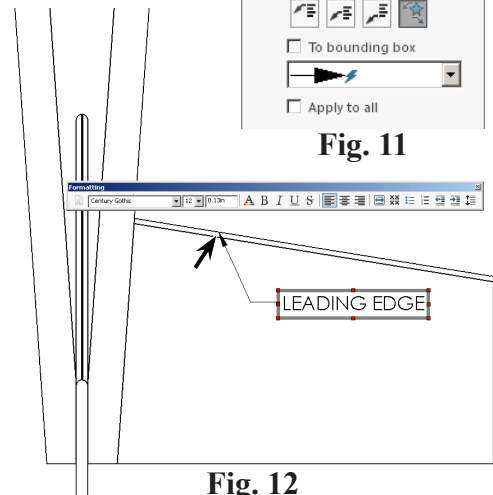


Fig. 12

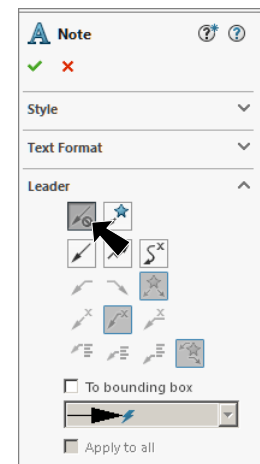


Fig. 13

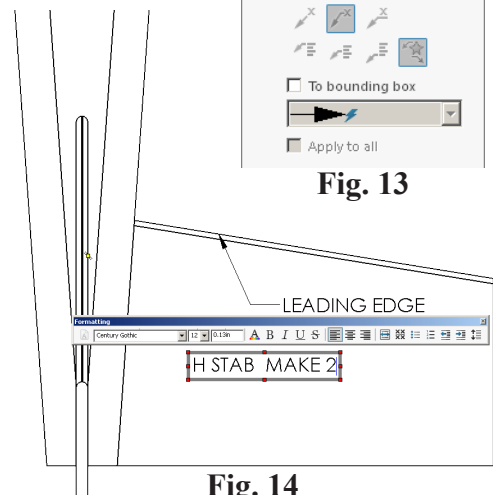
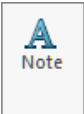



Fig. 14

Step 6. Click **Note**  on the Annotation toolbar.

Step 7. In the Note Property Manger:
under Leader, **Fig. 11**

if necessary select **Auto Leader** 
click leading edge of **V Stab** and bring the text
box **inside** V Stab and click
lock Caps and key-in **LEADING EDGE**, **Fig. 15**

click OK  in Property Manager.

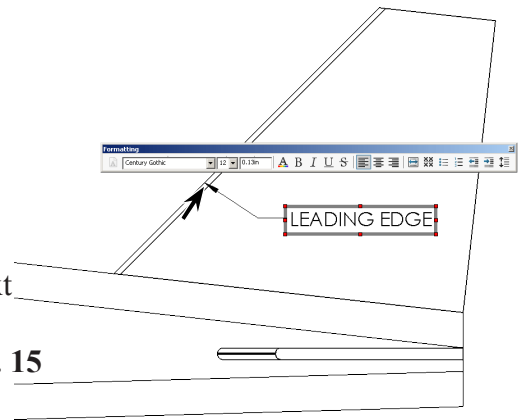
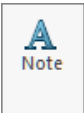


Fig. 15

Step 8. Click **Note**  on the Annotation toolbar.

Step 9. In the Note Property Manger, under Leader:

click **NO Leader** 
click **inside** V Stab and key-in **V STAB**, **Fig. 16**
click OK  in Property Manager.

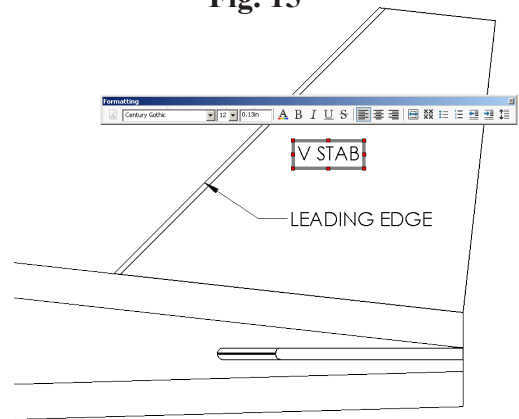



Fig. 16

G. Add Your Name and Period to Title Block.

Step 1. Use **Zoom to Area**  in the View toolbar to drag a zoom window around the **DRAWN BY** and **PERIOD** in the title block, **Fig. 17**.

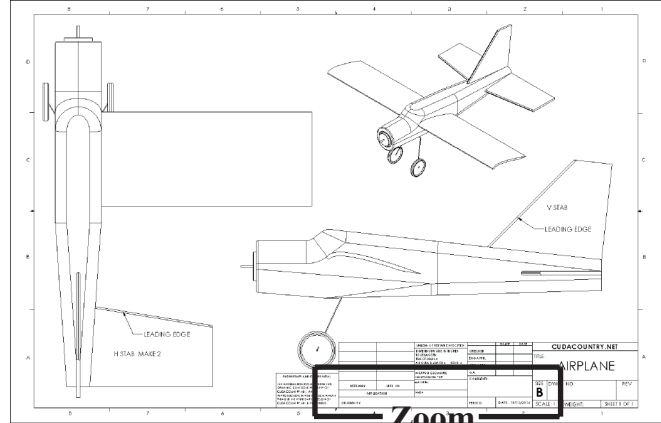
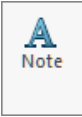


Fig. 17 Zoom

Step 2. Click **Note**  on the Annotation toolbar.

Step 3. Click just to the right of **DRAWN BY**., **Fig. 18**.

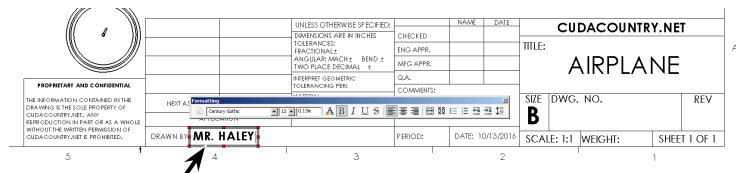




Fig. 18

Step 4. Lock the Caps and key-in **your first and last names**, **Fig. 18**.

Step 5. Click **OK**  in the Property Manager.

Step 6. Click **Note**  on the Annotation toolbar.

Step 7. Click just to the right of **PERIOD**., click and key-in **your Period number**, **Fig. 19**.

Step 8. Click **OK**  in the Property Manager.

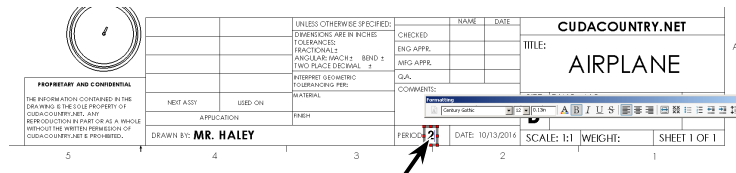


Fig. 19

Step 9. Save. Use **Ctrl-S**.