

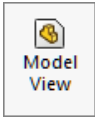


# Glider Drawing

## A. Insert Side, Top and Iso Views.

Step 1. Click File Menu > New, click **Drawing Metric** and OK.

Step 2. Click **View Layout**  on the Command Manager toolbar.

Step 3. Click **Model View**  on the View Layout toolbar.

Step 4. Click **Browse** in the Property Manager.

Step 5. Select your **GLIDER ASSEMBLY** file and click Open.

Step 6. In the Property Manager:  
under Orientation, **Fig. 1**

click **Right** 

check **Preview**

under Scale

select **Use custom scale** and set scale to **1:1**.

Step 7. Move the cursor into the graphic area and click to place the Right Side view as shown in **Fig. 2**. Align the front of Fuselage with the left border line and align the bottom with the top of the title block.

Step 8. **Move the cursor straight up** and click to place the Top view as shown in **Fig. 3**. Align edge of Fuselage just below the top border line.

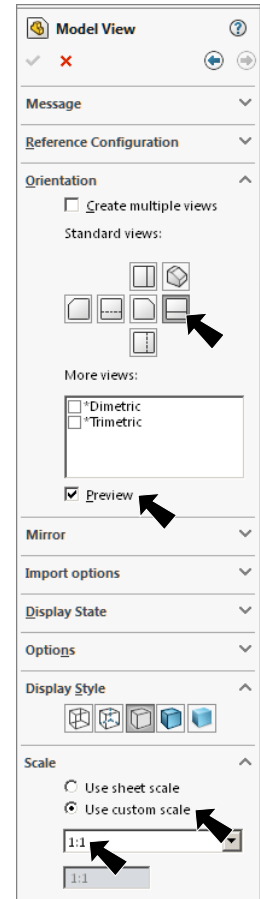
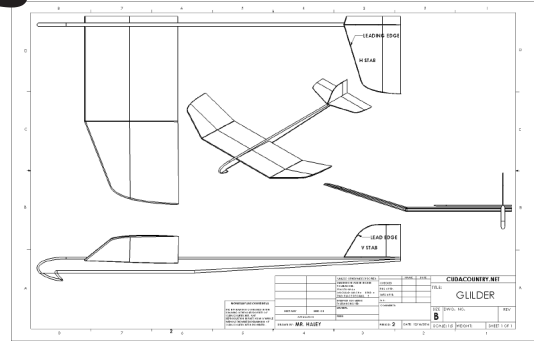


Fig. 1

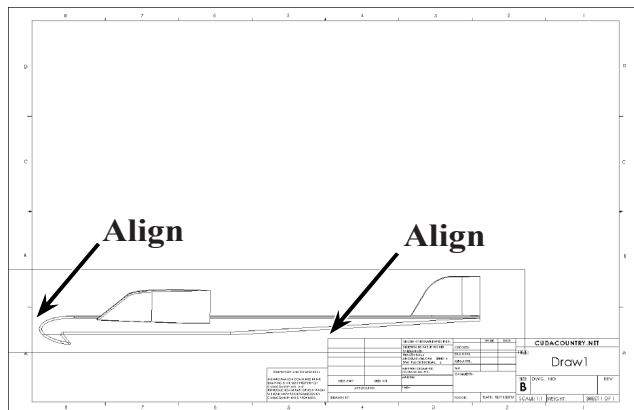


Fig. 2

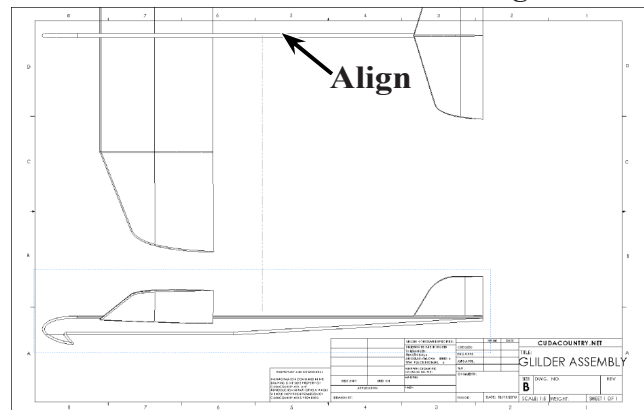
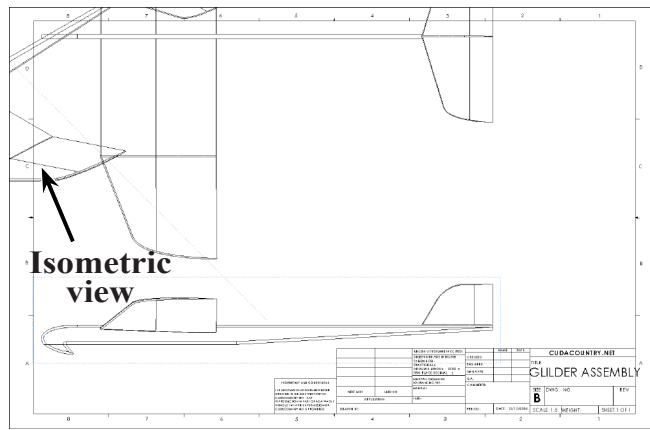


Fig. 3

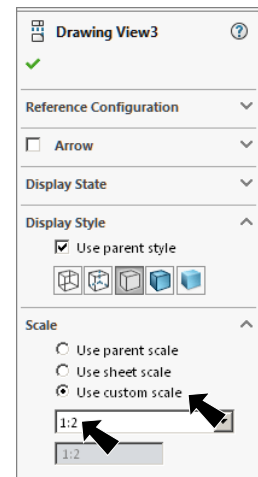
Step 9. Move the cursor to the top left corner of the drawing and click to place the Isometric view, **Fig. 4**.




**Fig. 4**


Step 11. Click OK  in the Property Manager.

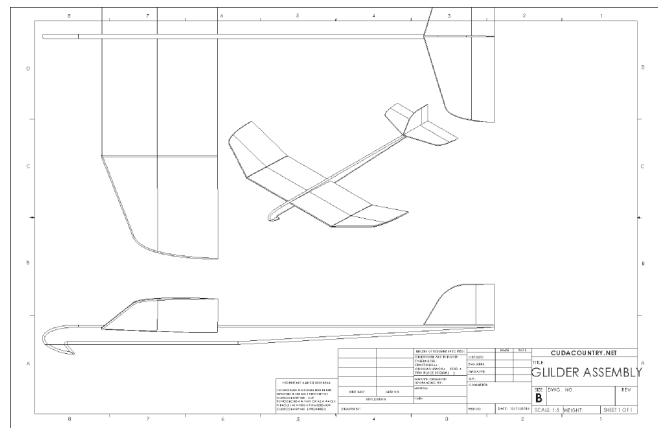
Step 11. Click the Isometric view to select it, **Fig. 4**.



**Fig. 5**

Step 12. In the Property Manager:  
 under Scale, **Fig. 5**  
 select **Use custom scale**  
 select **User Defined**  
 key-in **1:2** for scale.  
 click OK .

Step 13. Grab any geometry of the Isometric view and move view to between Wing and H Stab in Top view, **Fig. 6**. Click OK  in the Property Manager.




**Fig. 6**

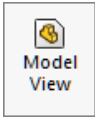
## B. Save as "GLIDER".

Step 1. Click File Menu > Save As.


Step 2. Key-in **GLIDER** for the filename and press ENTER.

## C. Insert Front View.


Step 1. Click **View Layout**  on the Command Manager toolbar.

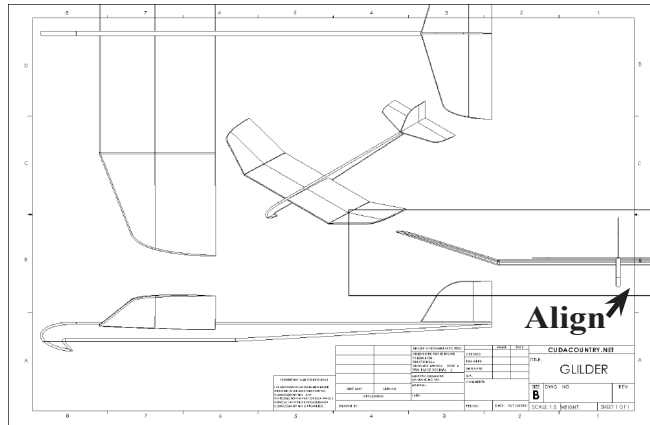
Step 2. Click **Model View**  on the View Layout toolbar.

Step 3. Click **Next**  in the Property Manager.

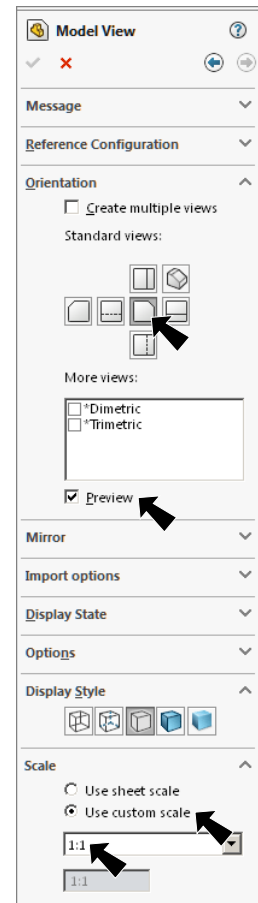
Step 4. In the Property Manager:  
under Orientation, **Fig. 7**  
click **Front**   
check **Preview**  
under Scale  
click **Use custom scale**  
and set scale to **1:1**.

Step 5. Move the cursor into the graphic area and click to place the Front view as shown in **Fig. 8**. Align the right edge of Fuselage just off the right border line.

Step 6. Click **OK**  in the Property Manager.



**Fig. 8**



**Fig. 7**

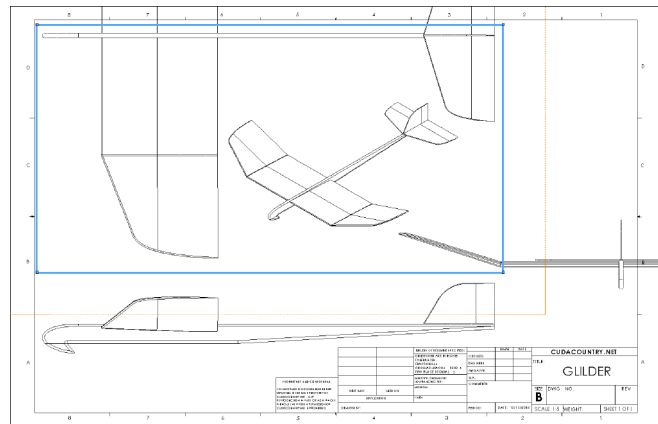
Step 7. Save. Use **Ctrl-S**.

## D. Crop Views.

Step 1. Click **Sketch**  on the Command Manager toolbar.

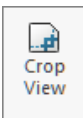
Step 2. Click **Corner Rectangle**  (S) in the **Rectangle flyout**  on the Sketch toolbar.

Step 3. Sketch a corner rectangle around the top view, **Fig. 9**. Position the top line of rectangle between top edge of Fuselage and top border line.




**Fig. 9**

Step 4. Click **View Layout**  on the Command Manager toolbar.

Step 5. Click **Crop View**  on the View Layout toolbar.

Step 6. Click **Sketch**  on the Command Manager toolbar.

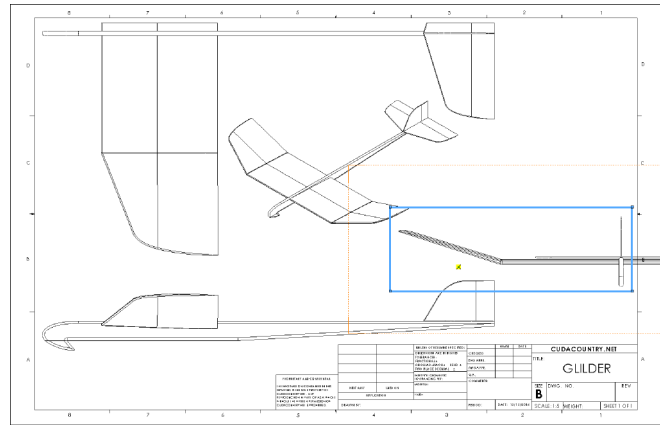
Step 7. Click **Corner Rectangle**  (S) on the Sketch toolbar.

Step 8. Sketch a corner rectangle around the Front view, **Fig. 10**. Start rectangle **below** and to right of Fuselage and just inside right border line. Drag up and to left to drag around all of Front view.

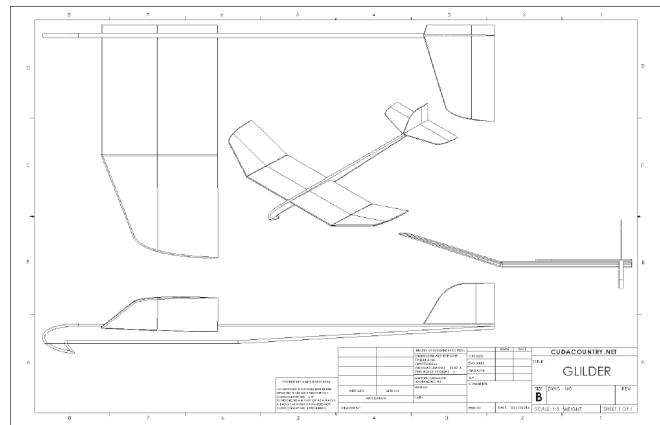
Step 9. Click **View Layout**  on the Command Manager toolbar and

**Crop View**  on the View Layout toolbar, **Fig. 11**.

Step 10. Save. Use **Ctrl-S**.



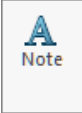
**Fig. 10**





**Fig. 11**

## E. Add Leaders and Notes to Stabilizers.

Step 1. Click **Annotation**  on the Command Manager toolbar.

Step 2. Click **Note**  on the Annotation toolbar.

Step 3. In the Note Property Manger:  
under Leader, **Fig. 12**

if necessary select **Auto Leader**   
in Top view, click the Leading Edge of the **H Stab** and bring the  
text box **inside** H Stab and click  
lock the Caps and key-in:  
**LEADING EDGE**, **Fig. 13**  
click OK  in Property Manager.

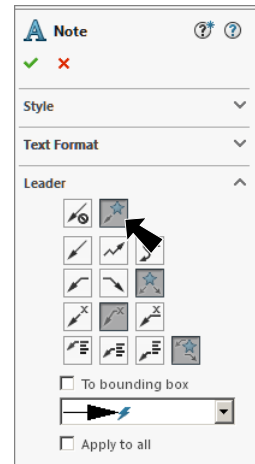
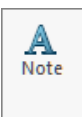



Fig. 12

Step 4. Click **Note**  on the Annotation toolbar.

Step 5. In the Note Property Manger:  
under Leader, **Fig. 14**

select **NO Leader**   
click **inside** H Stab and key-in **H STAB**, **Fig. 15**  
click OK  in Property Manager.

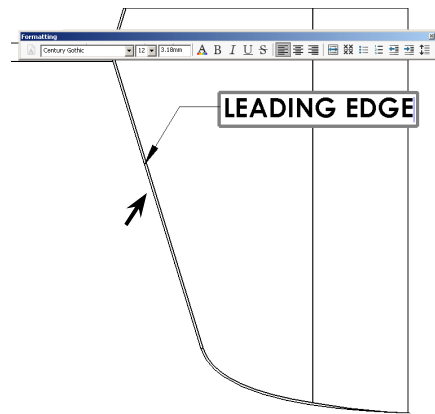


Fig. 13

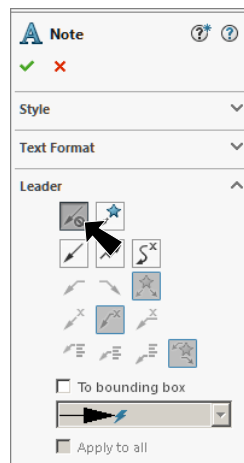


Fig. 14

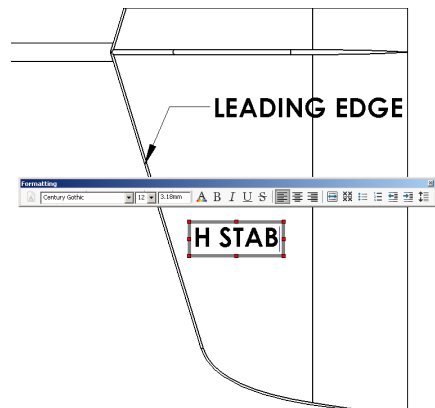
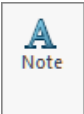


Fig. 15

Step 6. Click **Note**  on the Annotation toolbar.

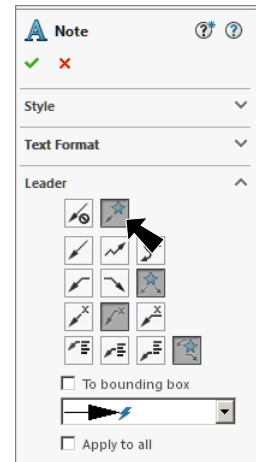
Step 7. In the Note Property Manger:  
under Leader, **Fig. 16**

click **Leader** 

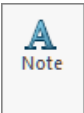
click the leading edge of **V Stab** and bring text box **inside** V Stab  
and click

lock the Caps and key-in **LEADING EDGE**, **Fig. 17**

click OK  in Property Manager.



**Fig. 16**

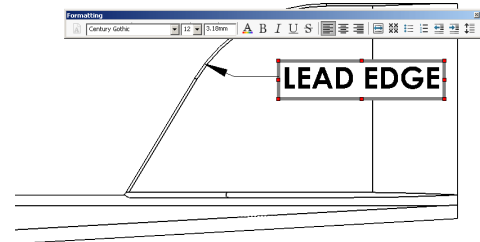
Step 8. Click **Note**  on the Annotation toolbar.

Step 9. In the Note Property Manger:  
under Leader, **Fig. 18**

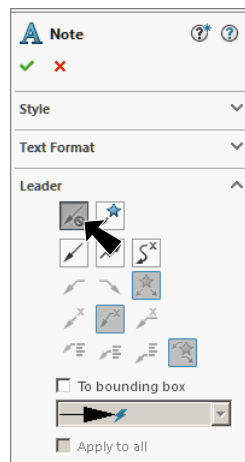
click **NO Leader** 

click **inside** V Stab and key-in **V STAB**, **Fig. 19**

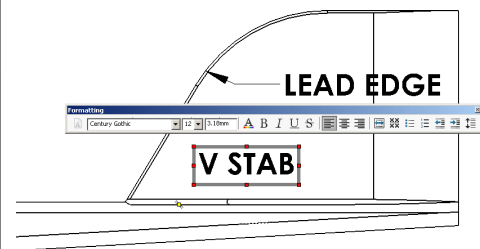
click OK  in Property Manager.



**Fig. 17**




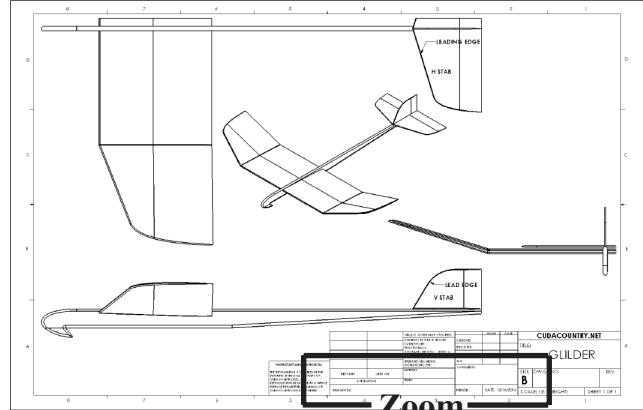
**Fig. 18**



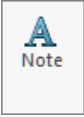
**Fig. 19**

## F. Add Your Name and Period to Title Block.

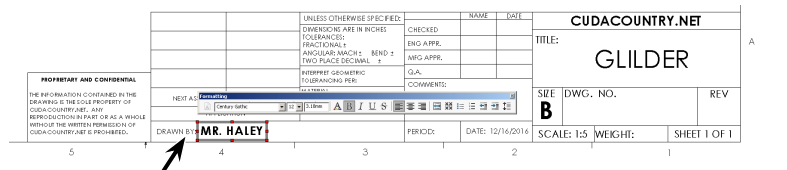
Step 1. Use the **Zoom to Area**  in the View toolbar to drag a zoom window around the **DRAWN BY** and **PERIOD** in the title block, **Fig. 20**.



**Fig. 20**

Step 2. Click **Note**  on the Annotation toolbar.

Step 3. Click just to the right of **DRAWN BY**., **Fig. 21**.

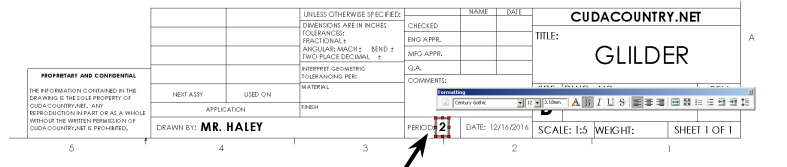


**Fig. 21**

Step 5. Click **OK**  in the Property Manager.

Step 6. Click **Note**  on the Annotation toolbar.

Step 7. Click just to the right of **PERIOD**., key-in **your Period number**, **Fig. 22**.



**Fig. 22**

Step 8. Click **OK**  in the Property Manager.

Step 9. Save. Use **Ctrl-S**.