

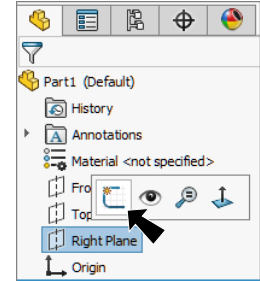


# Glider Fuselage Blank



## A. Corner Rectangle.

Step 1. Click File Menu > New, click **Part Metric** and OK.

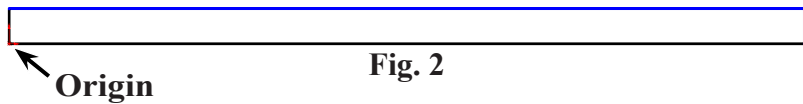
Step 2. Click **Right Plane**  in the Feature Manager and click **Sketch**  on the context toolbar, **Fig. 1**.




**Fig. 1**

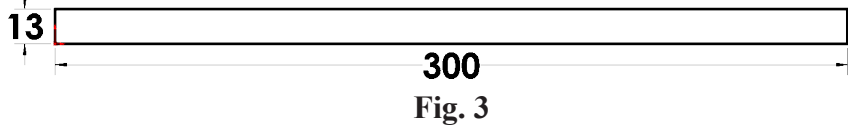
Step 3. Click **Corner Rectangle**  in the **Rectangle flyout**  on the Sketch toolbar.

Step 4. Sketch a corner rectangle starting at the Origin , **Fig. 2**.



**Fig. 2**

Step 5. Click **Smart Dimension**  (S) on the Sketch toolbar.



**Fig. 3**

Step 6. Dimension rectangle 13 by 300, **Fig. 3**.


Step 7. Click **Features**  on the Command Manager toolbar.


Step 8. Click **Extruded Boss/Base**  on the Features toolbar.

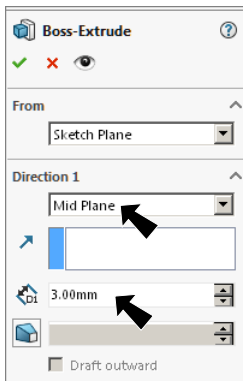
Step 9. In the Boss-Extrude Property Manager set:

under Direction 1, **Fig. 4**

End Condition  
**Mid Plane**

Depth  **3**

click OK .

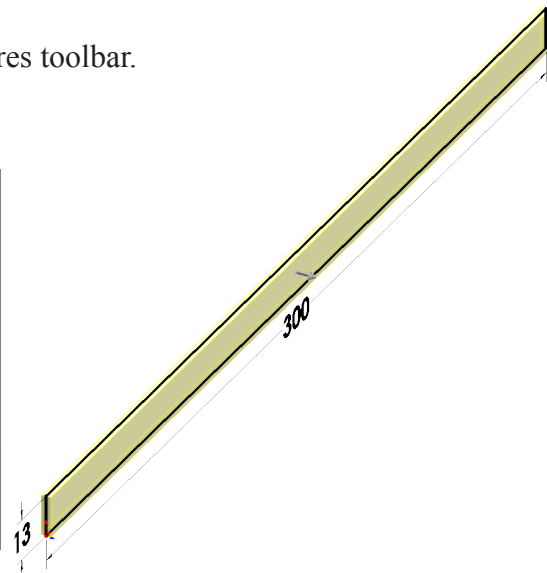


**Fig. 4**

## B. Save as "FUSELAGE BLANK".

Step 1. Click File Menu > Save As.

Step 2. Key-in **FUSELAGE BLANK** for the filename and press ENTER.



**Fig. 5**

### C. Material Balsa.

Step 1. Right click **Material** in the Feature Manager and click **Edit Material**, Fig. 6.

Step 2. Expand **Woods** (click the +) in the material tree and select **Balsa**, Fig. 7. Click **Apply** and **Close**, Fig. 8.

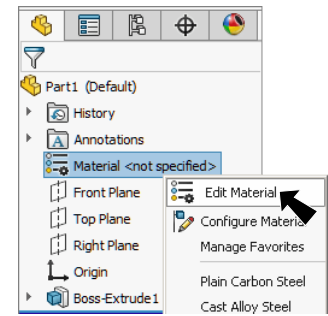


Fig. 6

### D. Enable PhotoView 360.

Step 1. If necessary, turn on PhotoView 360, click the flyout of **Options** on the Standard toolbar and click **Add-Ins**.

Step 2. In the dialog box for **PhotoView 360** check in the check box under **Active Add-Ins** and **Start-Up**, Fig. 9. Click **OK**.

### E. Rotate Mapping.

Step 1. Click **PhotoView 360** Menu > **Edit Appearance**.

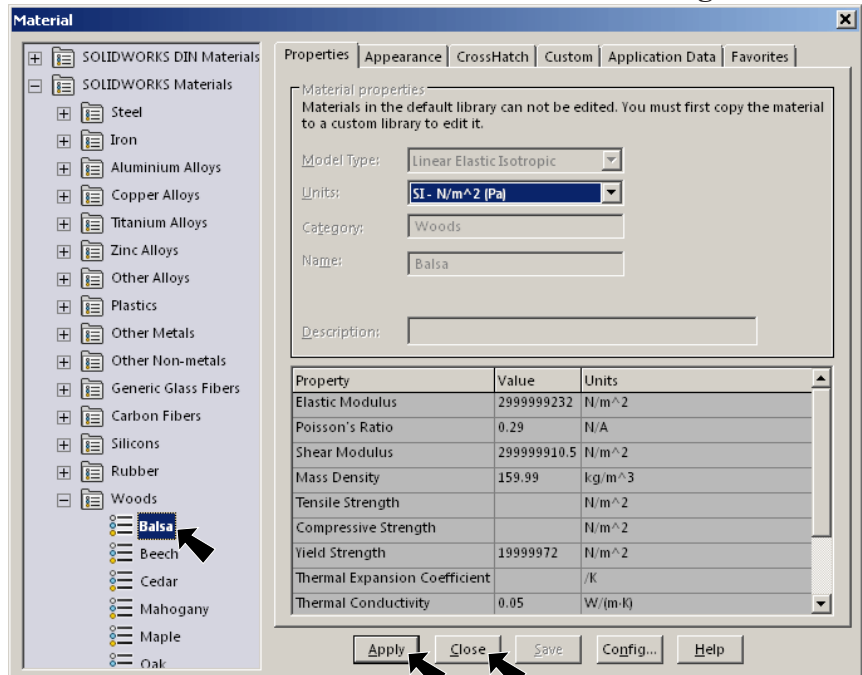


Fig. 7

Step 2. In the Property Manager: click **Mapping tab** under Mapping controls **Rotation 90** click **OK**.

Step 3. Save. Use **Ctrl-S**.

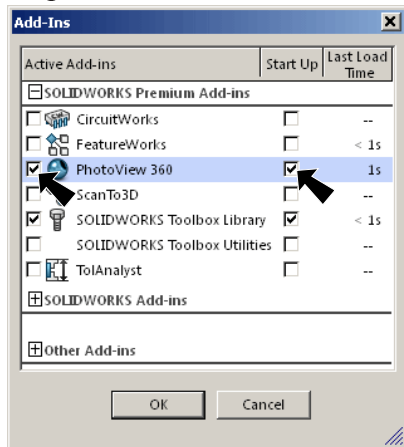


Fig. 9

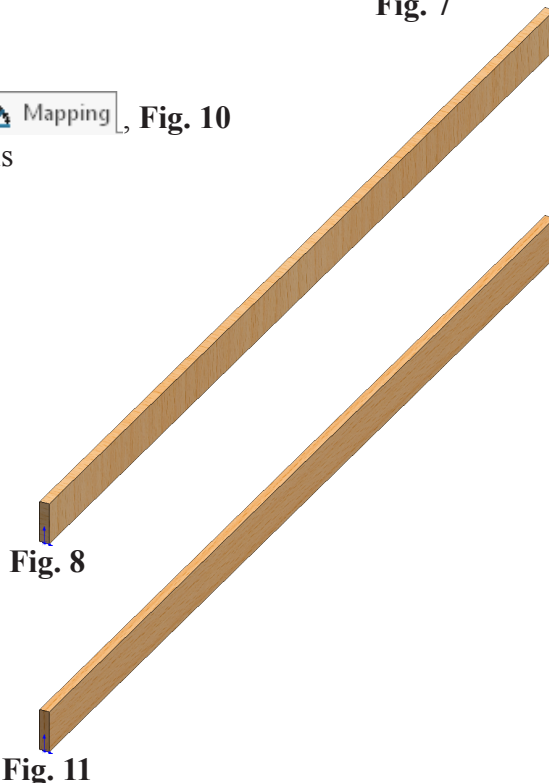


Fig. 8

Fig. 11

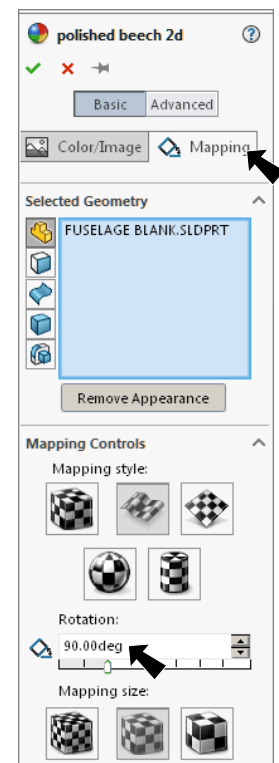


Fig. 10