

Chapter 1

Foot Stool Heart

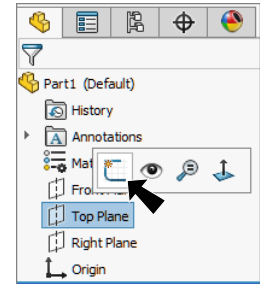
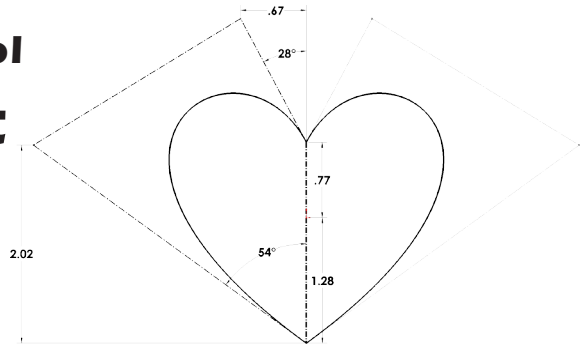




Fig. 1

A. Sketch Construction Line.

Step 1. Click File Menu > New, click **Part** and OK.

Step 2. Click **Top Plane**  in the Feature Manager and click **Sketch**  on the context toolbar, **Fig. 1**.

Step 3. Click **Centerline**  in the **Line flyout**  on the Sketch toolbar.

Step 4. Sketch a **vertical construction line coincident through the Origin** , **Fig. 2**.

Step 5. **Right click graphics area and click Select** from menu to unselect Centerline tool.

Step 6. Click **Smart Dimension**  (S) on the Sketch toolbar.

Step 7. Dimension from Origin **.77** and **1.28**, **Fig. 3**.

Step 8. Click Zoom to Fit  (F) on the View toolbar.

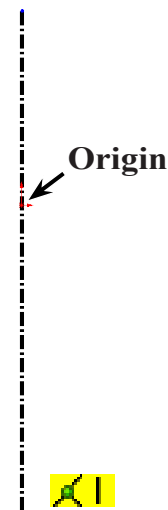


Fig. 2

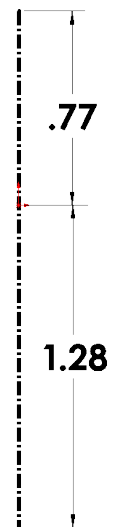




Fig. 3

B. Save as "HEART".


Step 1. Click File Menu > Save As.

Step 2. Key-in **HEART** for the filename and press ENTER.

C. Spline.

Step 1. Click **Style Spline**  in the **Spline flyout**  on the Sketch toolbar.

Step 2. Sketch a **4 control vertex point Spline** between bottom endpoint of centerline and top endpoint of centerline, **Fig. 4**. Press Escape to end spline.

Step 3. Click **Smart Dimension** (S)  on the Sketch toolbar.

Step 4. Add dimensions, **Fig. 5**.

Step 5. Save. Use **Ctrl-S**.

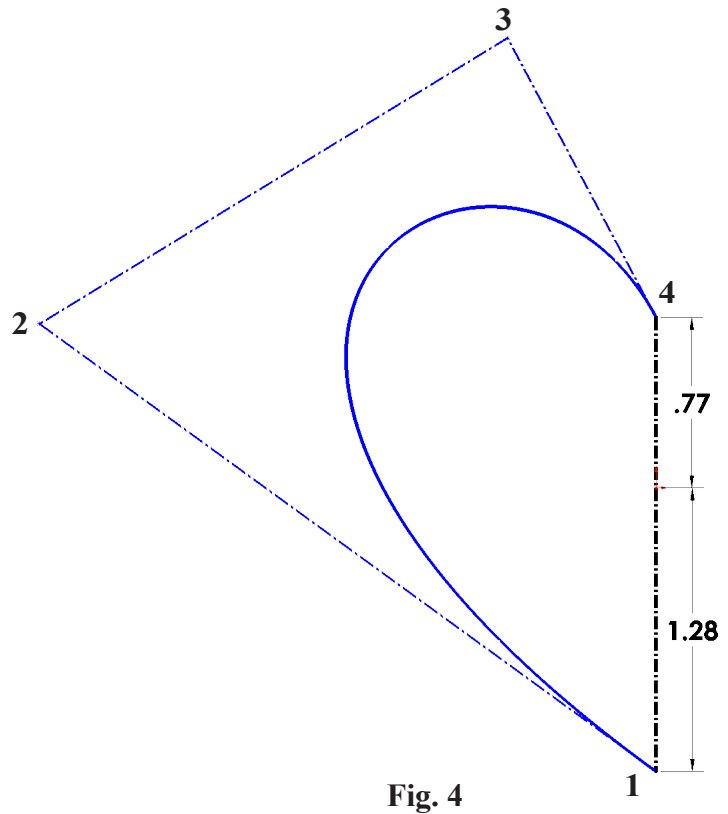


Fig. 4

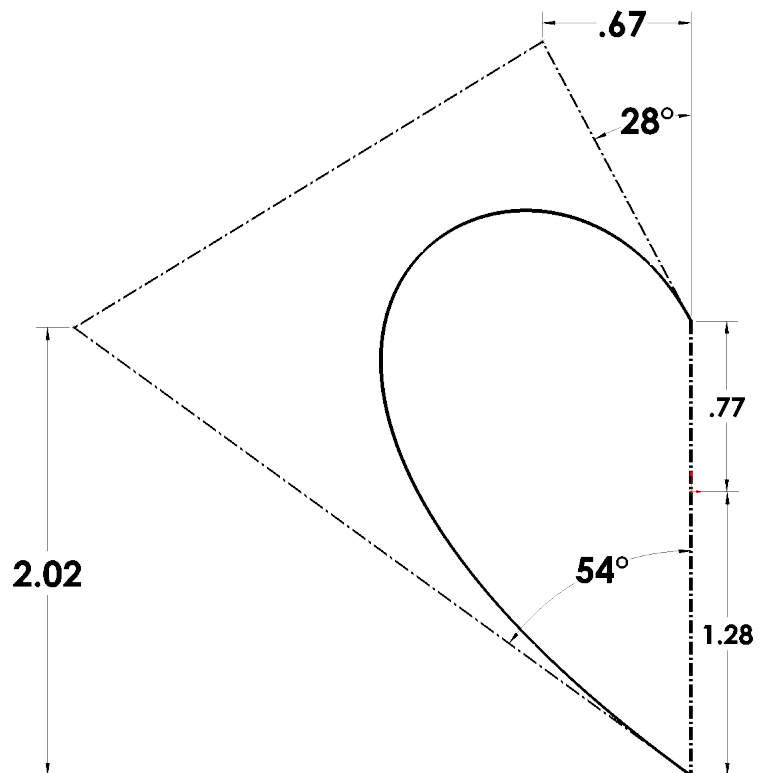


Fig. 5

D. Mirror Spline.

Step 1. Drag a “trend to left - more liberal” selection across centerline and spline, Fig. 6.

Step 2. Click **Mirror Entities**  on the Sketch toolbar, Fig. 7.

Step 3. Save. Use **Ctrl-S**.
Important to Save here.

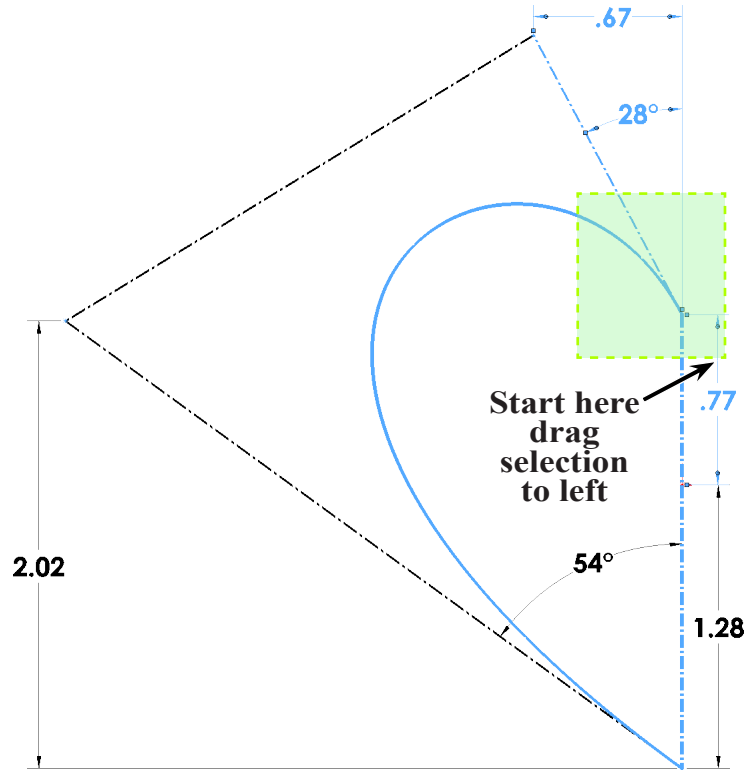


Fig. 6

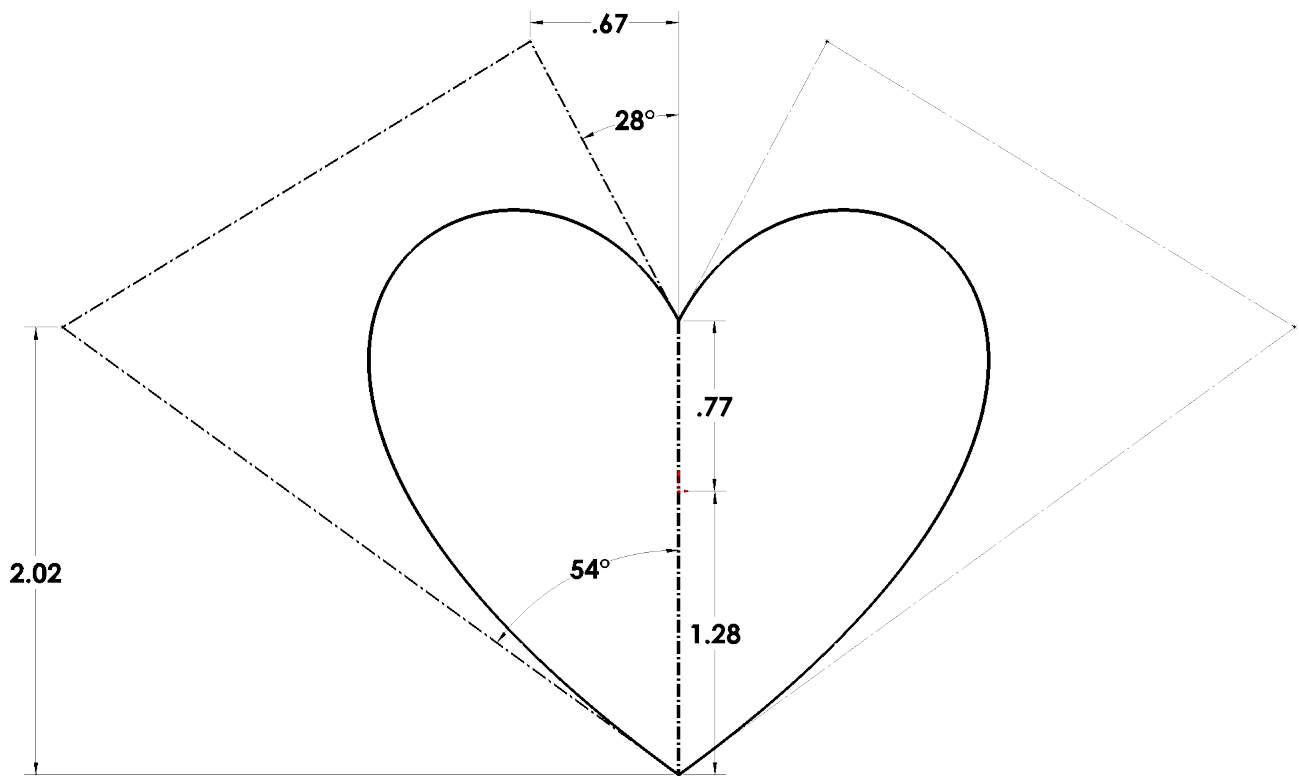


Fig. 7

E. Make Block.

Step 1. Click Tools Menu > Blocks > Make.

Step 2. In the Make Block Property Manager set:

under Block Entities, **Fig. 8**

drag selection to left across both splines and centerline, Fig. 9

expand Insertion Point

drag Insertion Point Manipulator  **to Origin, Fig. 9 and**

Fig. 10

click OK .

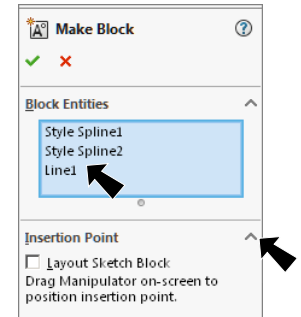


Fig. 8

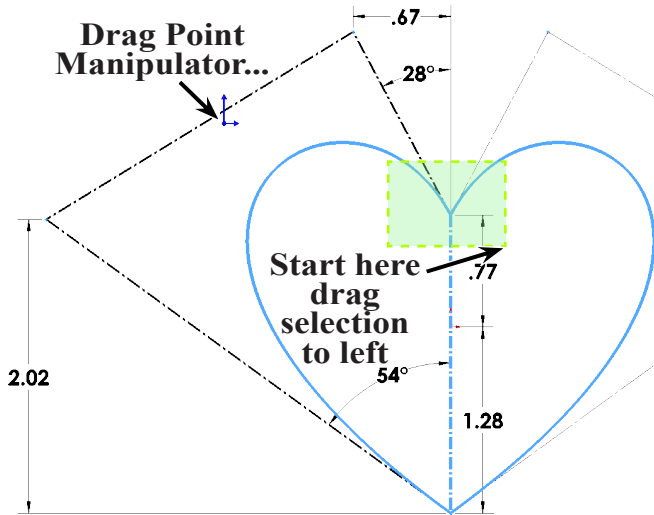


Fig. 9

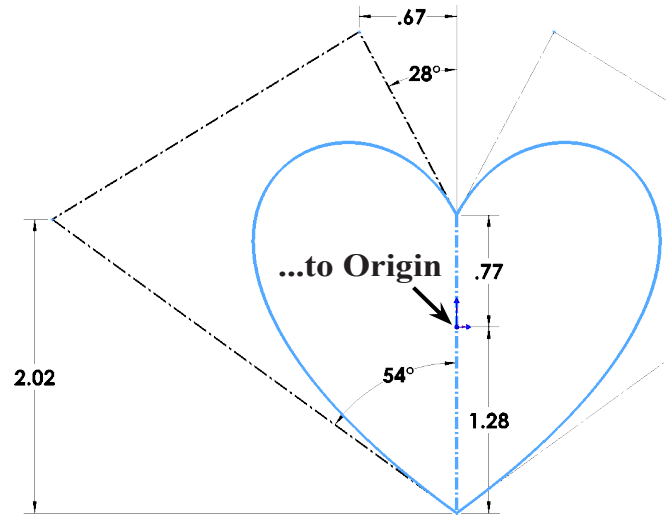



Fig. 10

F. Save Block.

Step 1. **Right click Block1-1**  in the Feature Manager and click **Save Block** on the context toolbar, **Fig. 11**.

Step 2. In the Save As dialog box, **Fig. 12**

key-in **HEART1** for the filename

navigate to **My Documents/Foot Stool** folder and click Save.

Step 3. **Do Not Save Heart part file** with the Block as the Block deleted all dimensions and relations in the sketch. Or you can undo creating the Block.

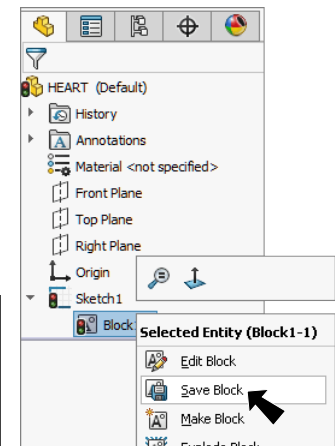


Fig. 11

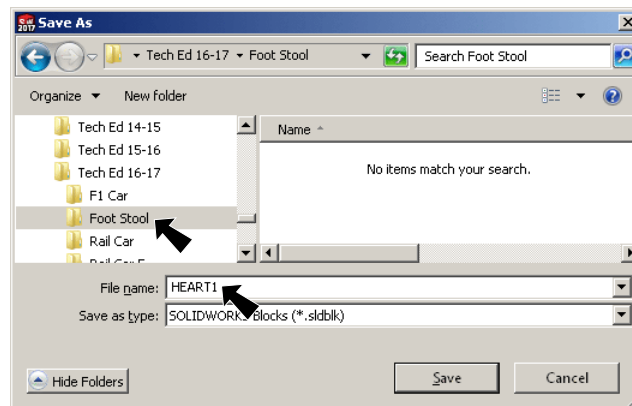


Fig. 12