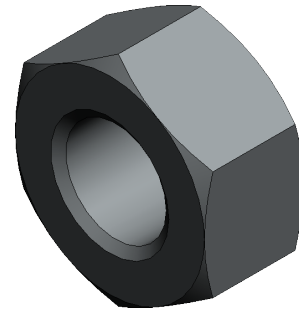






# Tri-Spinner Nut



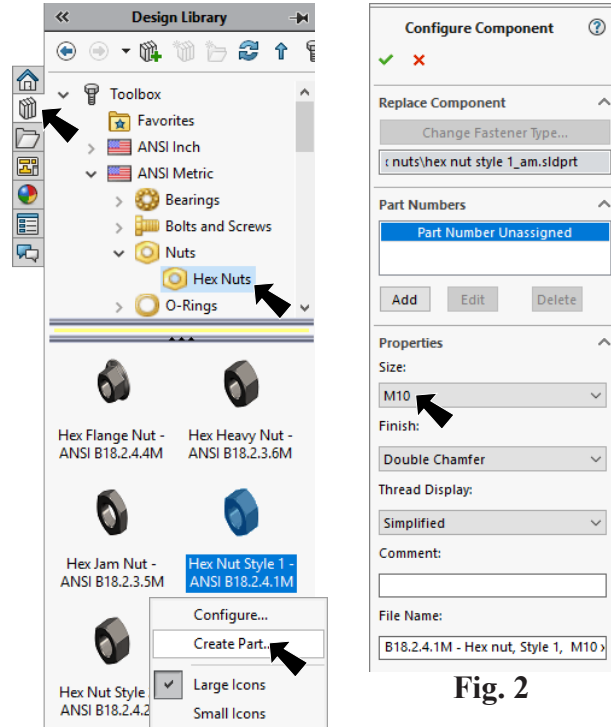
## A. Toolbox Nut.

Step 1. Click **Design Library** tab  in the Task Pane, **Fig. 1**.

Step 2. Expand the **Toolbox**  **Toolbox**  
 Expand **ANSI Metric** folder  **ANSI Metric**  
 Expand **Nuts** folder  **Nuts**  
 Click **Hex Nuts** folder  **Hex Nuts**

Step 3. **Right click Hex Nut Style 1...** and click **Create Part** from menu, **Fig. 1**.

Step 4. In the Component Property Manager:  
 under Properties, **Fig. 2**  
 set Size **M10**  
 click OK .



**Fig. 1**

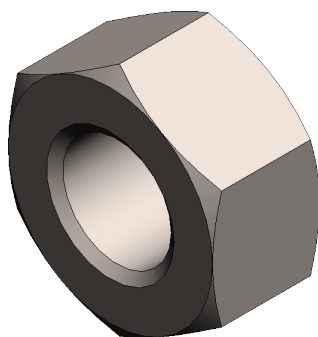
**Fig. 2**

## B. Save As in Tech Ed folder.

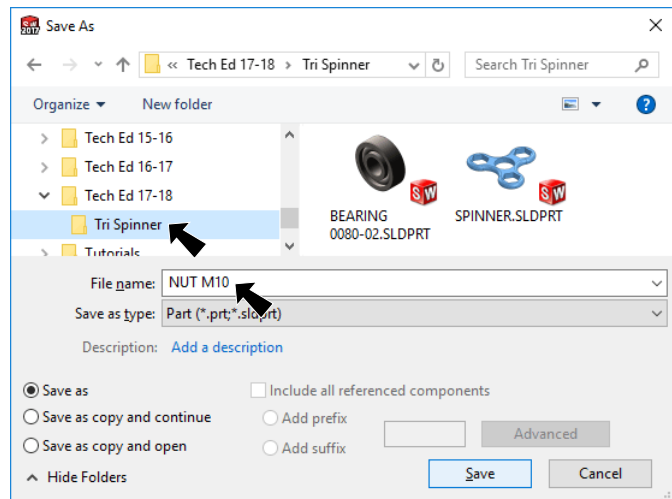
Step 1. Click File Menu > Save As.

Step 2. In the Save As dialog box:  
 key-in **NUT M10** for file name

navigate to **My Documents/**  
**Tech Ed 17-18/Tri Spinner** folder  
 click **Save**, **Fig. 4**.



**Fig. 3**



**Fig. 4**

## C. Appearance Chrome.

Step 1. Click part to select, click **Appearance Callout**  on the context toolbar and click **NUT M10...** , Fig. 5.

Step 2. In the Appearances Task pane, expand **Metal**, click **Chrome** and in the lower pane select **chromium plate**, Fig. 6.

Step 3. Click OK  in the Property Manager.

Step 4. Save. Use **Ctrl-S**.

Step 5. Close the File. Use **Ctrl-W**.

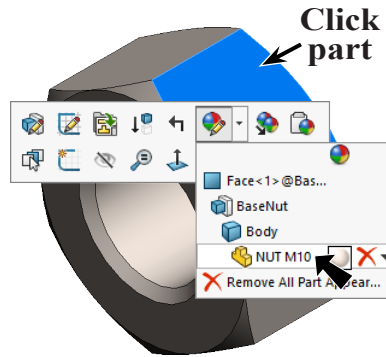


Fig. 5

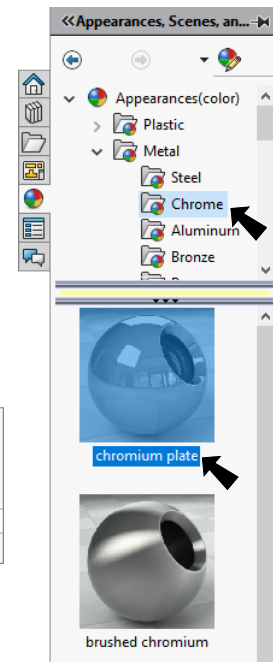


Fig. 6

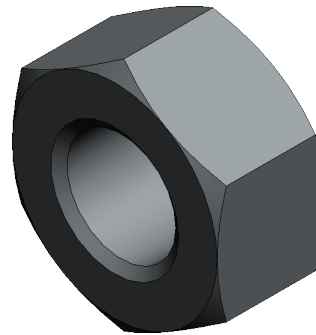


Fig. 5