

## A. Insert Views.

Step 1. Click File Menu > New, click **Drawing** and OK.

Step 2. Click **Browse** in the Property Manager.

Step 3. Select your **SKYHOOK** part file and click Open.

Step 4. In the Property Manager, under Orientation, **Fig. 1**

click **Right**



check **Preview**

under Scale

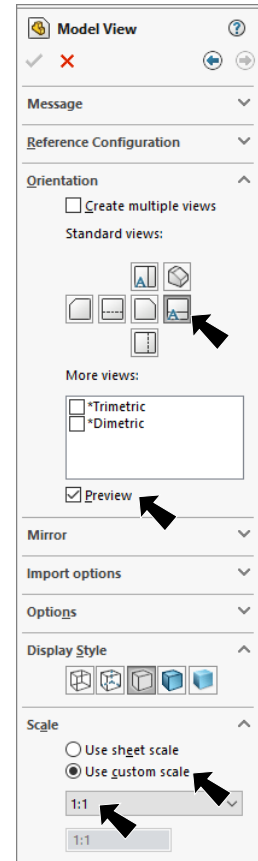
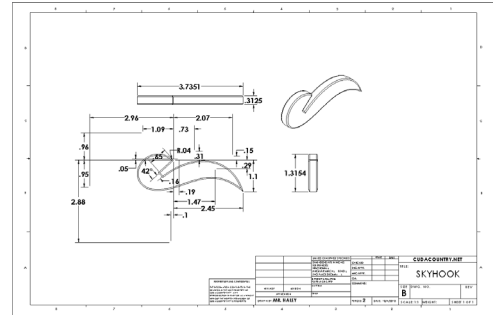
select **Use custom scale**

set scale to **1:1**.

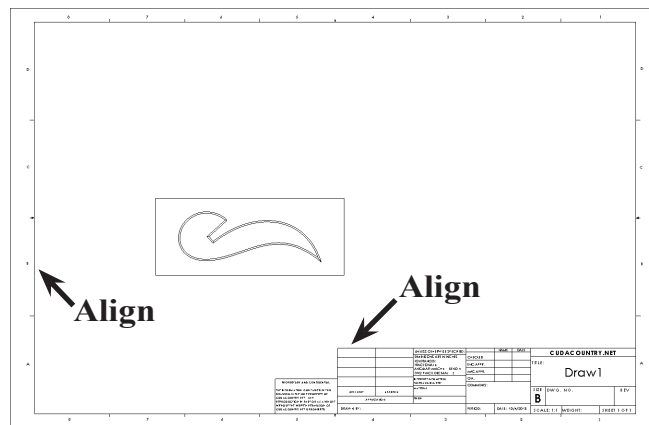
Step 5. Move the cursor into the drawing and click to place the Right Side view as shown in **Fig. 2**.

Step 6. **Move the cursor straight up** and click to place the Top view as shown in **Fig. 3**.

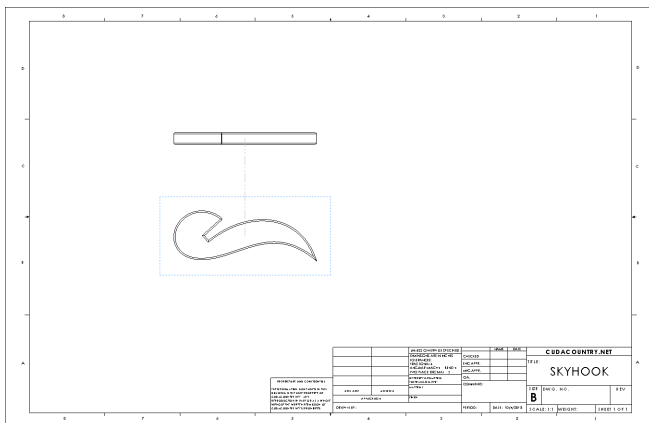
Step 7. Move the cursor to the right of the Side view and click to place Back view, **Fig. 4**.



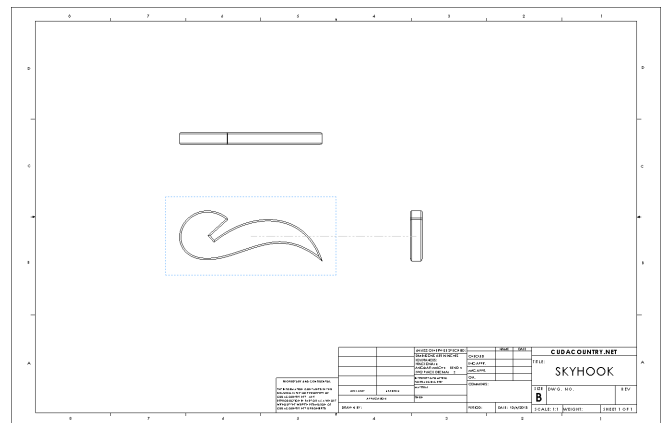
**Fig. 1**



**Fig. 2**

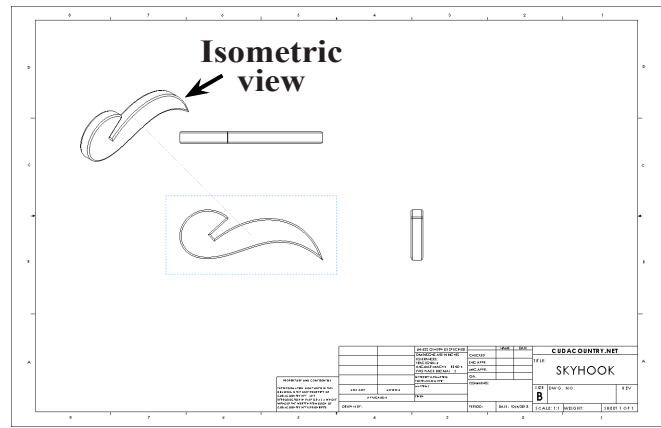


**Fig. 3**



**Fig. 4**

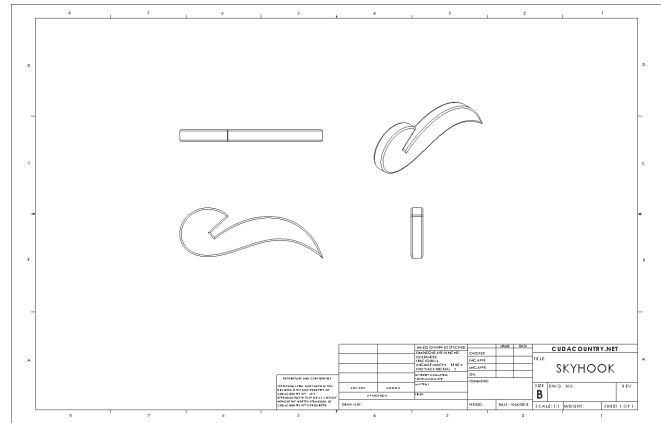
Step 8. Move the cursor to the top left corner of the drawing and click to place the Isometric view, **Fig. 5**.



**Fig. 5**

Step 9. Click OK  in the Property Manager.

Step 10. Grab any geometry of the Isometric view and move view to between Top view and Back view of drawing, **Fig. 6**.



**Fig. 6**

## B. Save as "SKYHOOK".

Step 1. Click File Menu > Save As.



Step 2. Key-in **SKYHOOK** for the filename and press ENTER.

## C. Display Dimensions.

Step 1. Click **Annotation**  on the Command Manager toolbar.

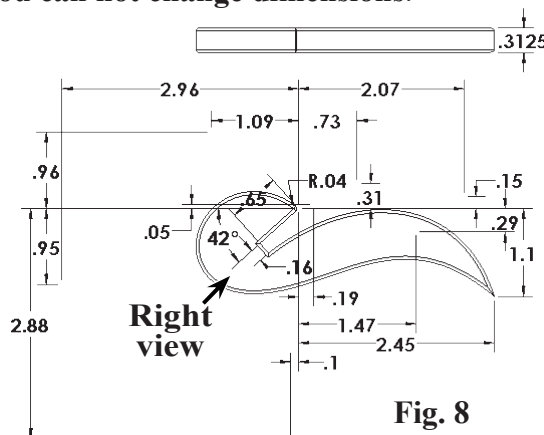
Step 2. Click **Model Items**  on the Annotation toolbar.

Step 3. In the Property Manager:  
under Source, **Fig. 7**  
select **Entire model**  
under Dimensions

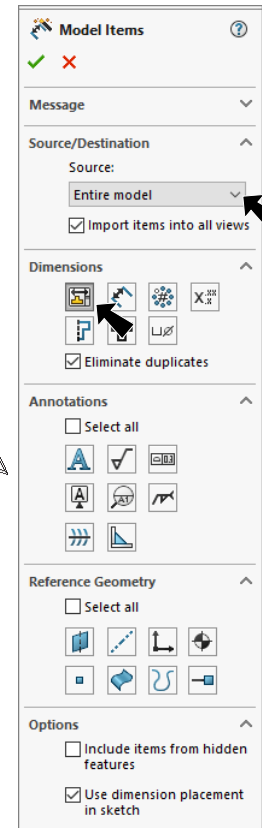
select **Marked for drawing**   
in the graphics area click the **Right view**, **Fig. 8**  
click OK .

Step 4. Arrange the dimensions as shown in **Fig. 8**. To hide a dimension, right click and select Hide from menu. **You can only place dimensions here- you can not change dimensions.**

Step 5. Save.  
Use **Ctrl-S**.




**Fig. 8**



**Fig. 7**

## D. Add Dimensions.

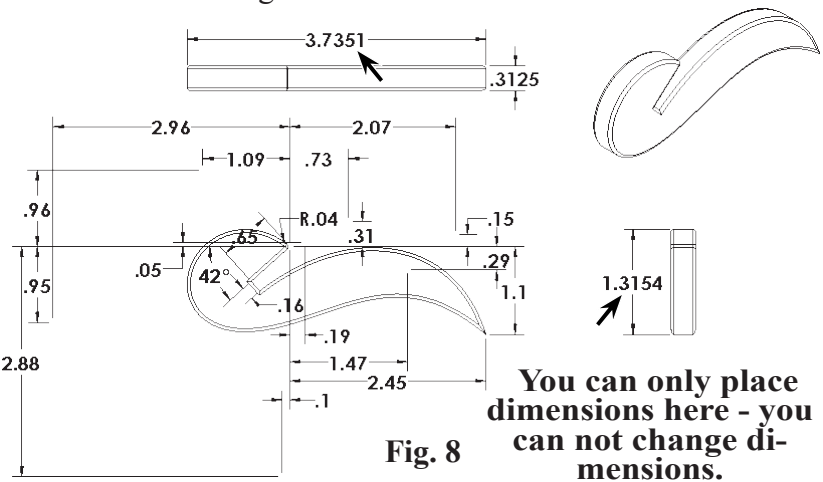
Step 1. Click **Sketch**  on the Command Manager toolbar.

Step 2. Click **Smart Dimension**



**(S)** on the Sketch toolbar.

Step 3. Add length and height dimensions, **Fig. 9**. To Smart dimension click the vertex, then move the cursor out away from the line and click. Arrange the dimensions as **Fig. 9**.

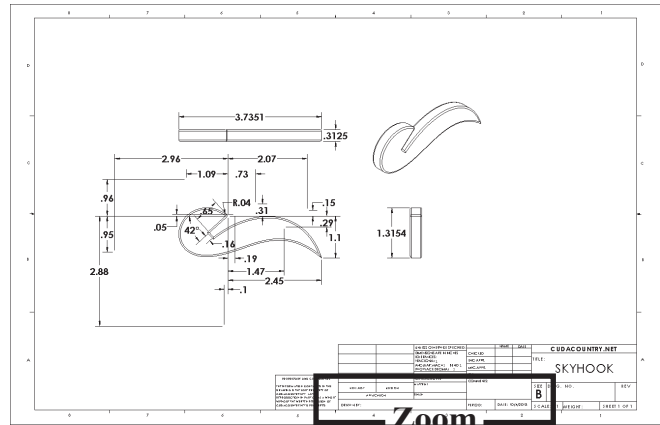


**Fig. 8**

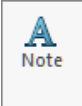
## E. Add Your Name and Period to Title Block.

Step 1. Zoom in on **DRAWN BY** and **PERIOD** in the title block, **Fig. 10**. Use

**Zoom to Area** .

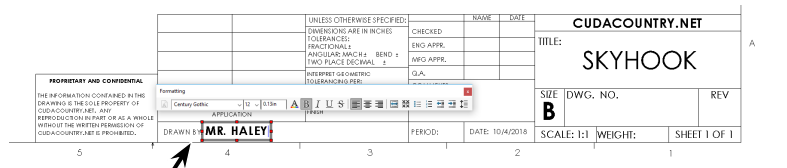


**Fig. 10**

Step 2. Click **Note**  on the Annotation toolbar.

Step 3. Click just to the right of **DRAWN BY:**, **Fig. 11**.

Step 4. Lock the Caps and key-in **your first and last names**, **Fig. 12**.



**Fig. 11**

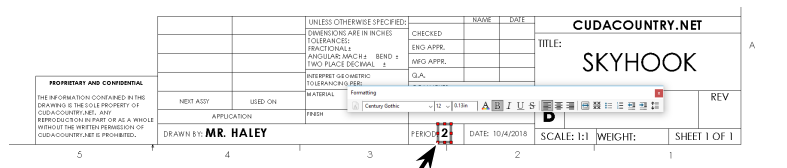
Step 5. Click **OK**  in the Property Manager.

Step 6. Click **Note**  on the Annotation toolbar.

Step 7. Click just to the right of **PERIOD:**, click and key-in **your Period number**, **Fig. 12**.

Step 8. Click **OK**  in the Property Manager.

Step 9. Save. Use **Ctrl-S**.



**Fig. 12**