

A. Open 'back view' File.

Step 1. Open your 'back view.fla' file from the File Menu in the Menu Bar.

B. Create Symbol for Yellow Line.

Step 1. Use the Selection Tool (V) to select the yellow line, Fig. 1.

Step 2. Click Modify Menu > Convert to Symbol (F8).

Step 3. In the Convert to Symbol dialog box, Fig 2.
Name key-in **Yellow Line**
Type **Graphic**
Registration **center grid**
click OK.

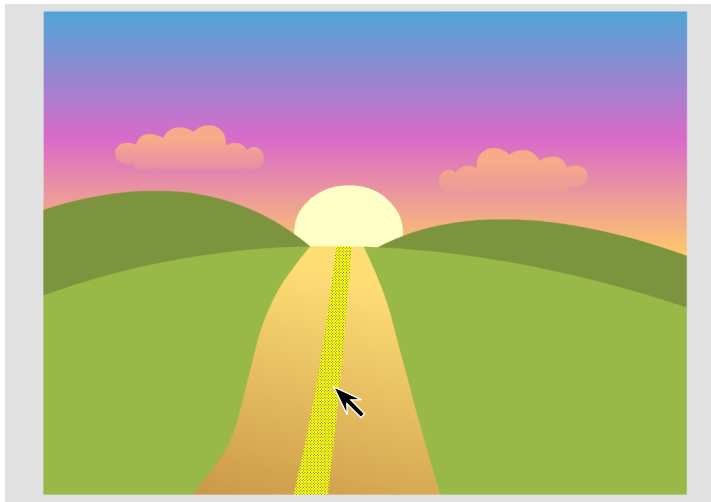


Fig. 1

C. Insert Keyframes 2 and 3.

Step 1. Click Edit Symbols at the left end of the Timeline and click **Yellow Line (Shift-E)**, Fig. 3.

Step 2. **Show All (Ctrl-3)**.

Step 3. Click View Menu > Grid > Edit Grid (Ctrl-Alt-G).

Step 4. In the Grid panel (Ctrl-Alt-G) check **Show grid**, Fig. 4
Width 10 Height 10
click OK

Step 5. Click **frame 2** of Layer 1 **drag in one motion** across to **frame 3** to highlight frames 2 and 3, Fig. 5.

Step 6. Click Modify Menu > Timeline > Convert to Keyframes (F6).

Step 7. Save (Ctrl-S).

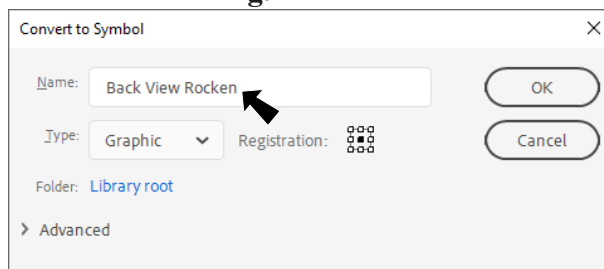


Fig. 2

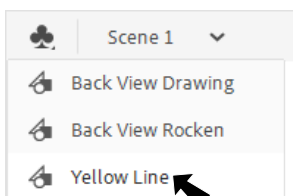


Fig. 3

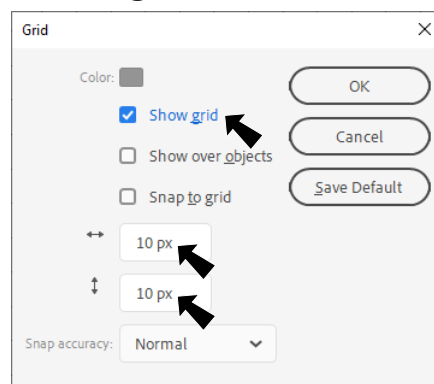


Fig. 4

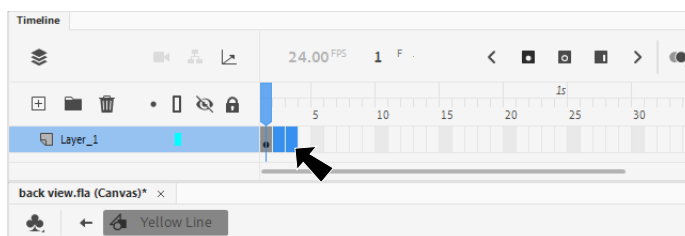



Fig. 5

D. Modify Keyframes.

Step 1. Click the **Eraser Tool**  (E) in the toolbar.

Step 2. In the Properties panel (Ctrl-F3)
under Eraser Options, **Fig. 6**
Eraser type Square 
Size 10.

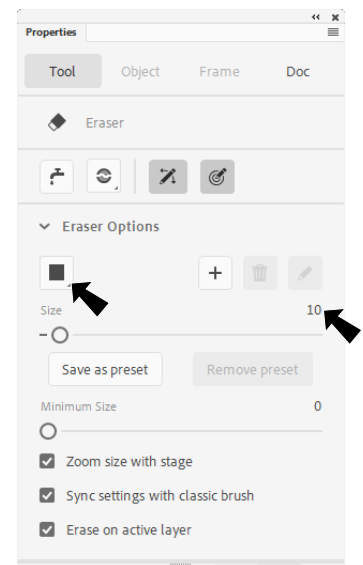


Fig. 6

Step 3. Move the **Playhead**  to **keyframe 1** in the Timeline, **Fig. 7.**

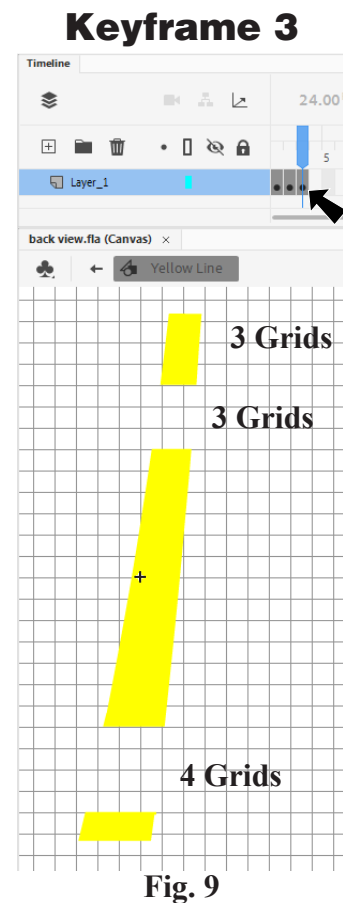
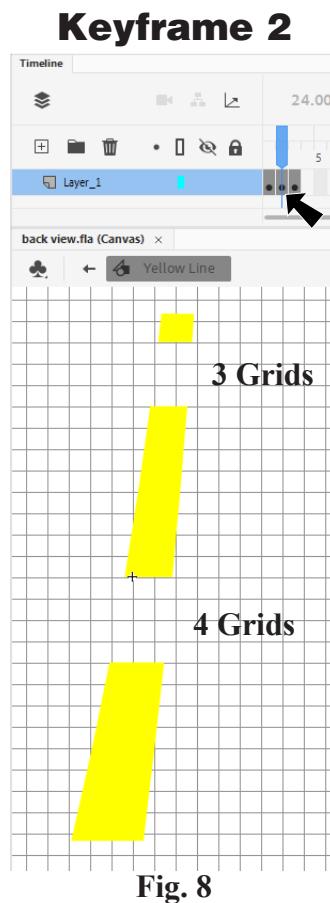
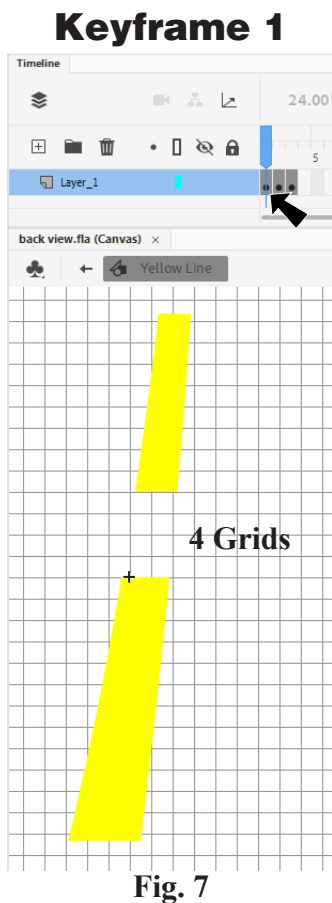
Step 4. Erase **4 grids** of the yellow line that are just above the + sign, **Fig. 7.**

Step 5. Move the **Playhead**  to **keyframe 2**, **Fig. 8.**

Step 6. Erase **4 grids** of the yellow line that are below the + sign and erase **3 grid 1 grid** down from the top, **Fig. 8.**

Step 7. Move the **Playhead**  to **keyframe 3**, **Fig. 9.**

Step 8. Erase **4 grids** of the yellow line one grid up from the bottom of the line and erase **3 grid 3 grids** down from the top, **Fig. 9.**



E. Frame Rate.

Step 1. Turn off Grid. Use View Menu > Grid > Show Grid (**Ctrl-'**).

Step 2. Click the **Selection Tool**  (**V**) in the toolbar.

Step 3. In the Properties panel (**Ctrl-J**)
Frame rate 8, Fig. 10
click OK.

Step 4. Click **Loop Playback**  in the Timeline header.

Step 5. Drag **Frame Selectors**  to select all 3 frames, **Fig. 11**.

Step 6. Click **Play** 

Step 7. Save
(**Ctrl-S**).

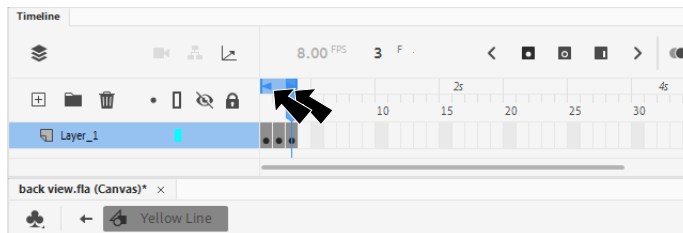


Fig. 11

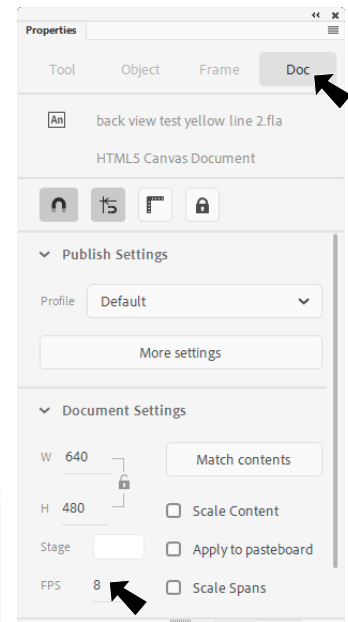




Fig. 10


F. Cut Yellow Line and Repair Road.

Step 1. Click **Back**  at left end of Timeline to return to the scene. (**Ctrl-E**).

Step 2. Cut the Yellow Line symbol. Use
Edit Menu > Cut (**Ctrl-X**), **Fig 12**.

Step 3. Use **Line Tool**  (**N**) and draw
line across gap in road at bottom
of stage, **Fig. 13**.

Step 4. Click the Eye Dropper  (**I**)
from the toolbar and click the fill
of the road to pick up the color.
Fill in the road, **Fig 14**.

Step 5. Delete line with **Selection Tool**
 (**V**), **Fig. 14**.

Step 6. Save (**Ctrl-S**).

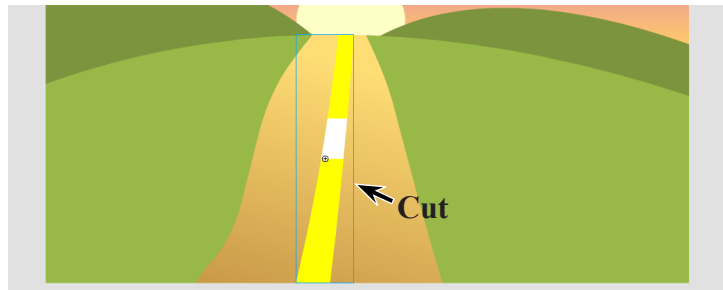


Fig. 12

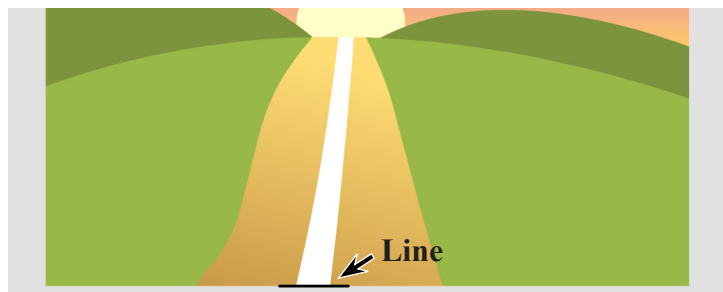


Fig. 13

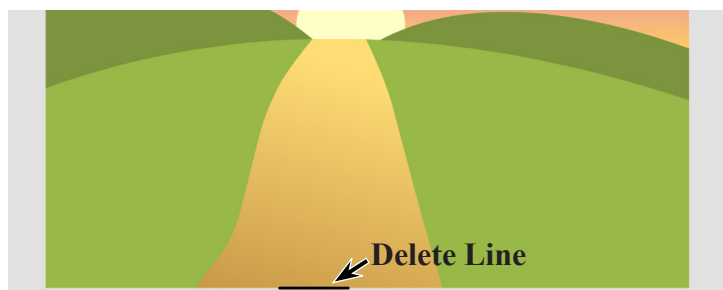




Fig. 14

G. Set Up Yellow Line Layer.

- Step 1. Click **Insert Layer**  and rename layer **Yellow Line**, **Fig 15**.
- Step 2. Click Edit Menu > Paste in Place (**Ctrl-Shift-V**) to paste in place Yellow Line symbol, **Fig 16**.
- Step 3. Show  **Back_View** layer.
- Step 4. Move Back View symbol into place, **Fig. 17**.

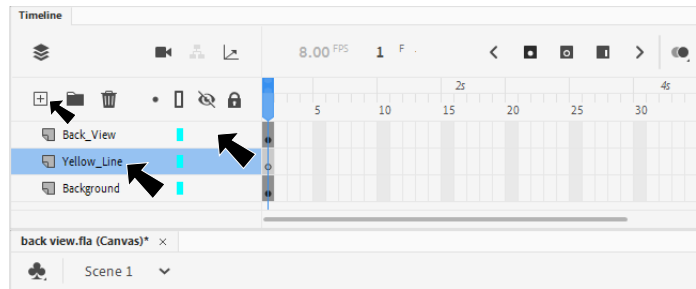


Fig. 15

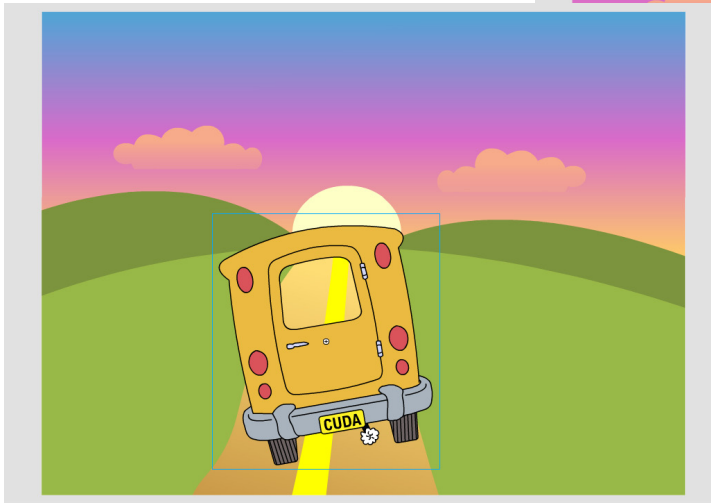


Fig. 17

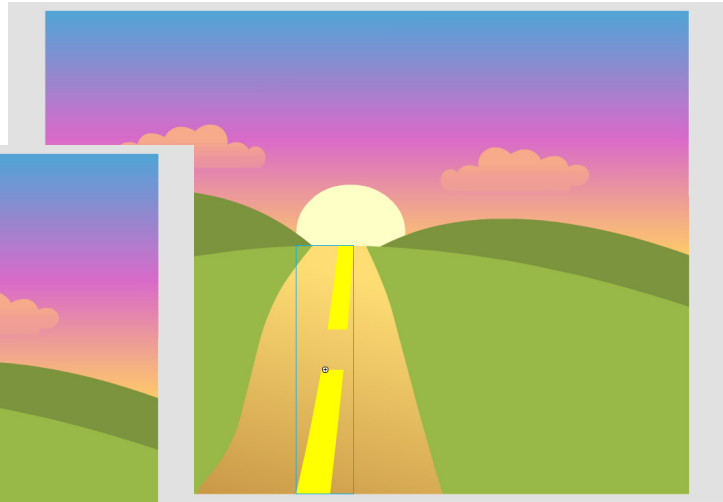





Fig. 16

H. Insert Frames.

- Step 1. To play the animation you need frames of all layers. **Drag down from frame 63 of the Back_View layer to select frame 63 of all layers**, **Fig. 18**.
- Step 2. Click **Insert Frame**  (**F5**) from Timeline tools.
- Step 3. **Turn off Loop Playback**  and **Play** .
- Step 4. Save (**Ctrl-S**).

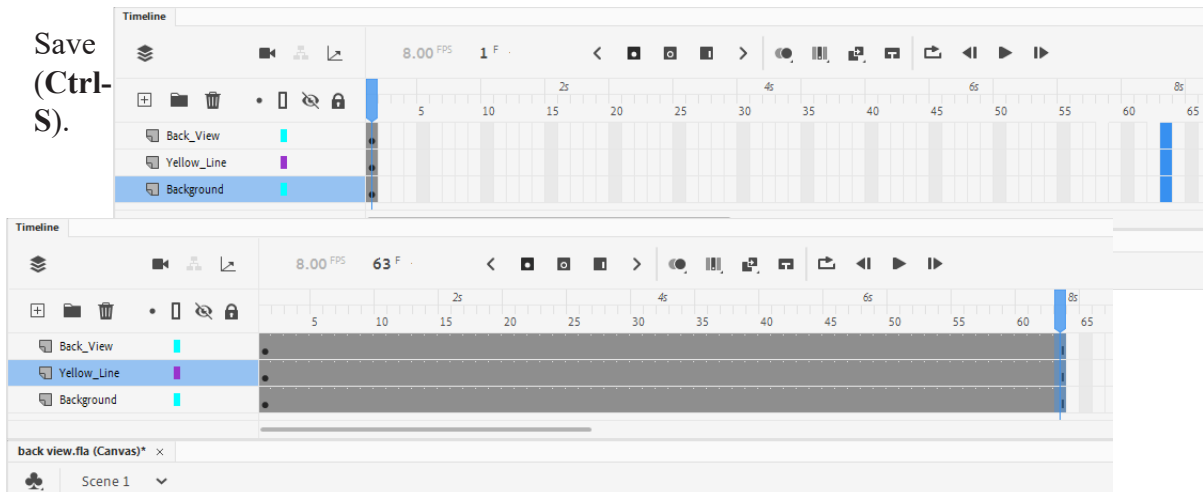


Fig. 18