



A. Create Drawing.

Step 1. Open your **BODY RAIL FORM** file.

Step 2. Click File Menu > New Drawing > From Design.

Step 3. In the Creating Drawing panel set under Reference, **Fig. 1** check **Full Assembly** under Destination Drawing **Create New** Template **From Scratch** Standard **ASME** Units **mm** Sheet Size **B (17in x 11in)** click OK.

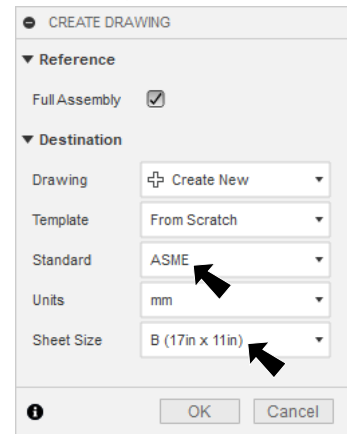
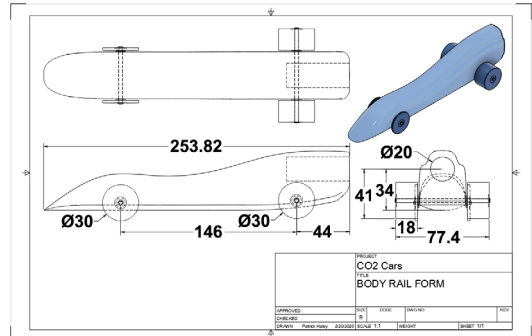


Fig. 1

B. Drawing View.

Step 1. In the Drawing View panel set under Appearance, **Fig. 2** Orientation **Right** Style **Visible and Hidden Edges** Scale **1:1**

Move the cursor into the canvas. Align the left edge of the preview with left drawing edge and align bottom of preview with the top of title block. Click to place the Right Side view, **Fig. 3**.

Click OK.

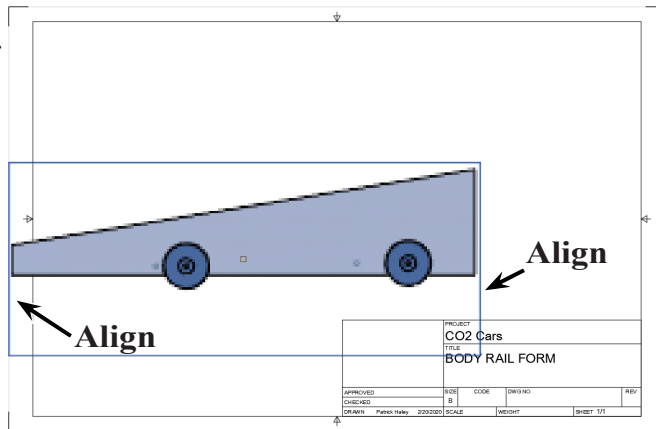


Fig. 3

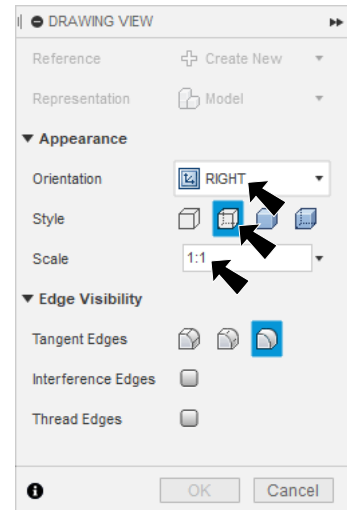


Fig. 2

C. Hide Bodies and Blank Component.

Step 1. In the Browser, **Hide** **Bodies** folder and **uncheck** to suppress **Blank** , **Fig. 4**.

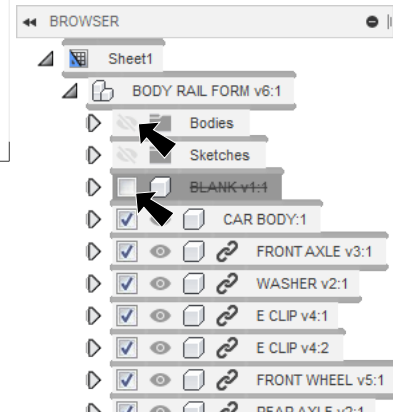


Fig. 4

D. Projected Views.

Step 1. On the Drawing tab **DRAWING** in the Drawing Views area click **Projected View**  (P).

Step 2. Click the Right View and **move cursor straight up**. Center preview between the side view you just placed and top border line. Click to place the Top View, **Fig. 5**.

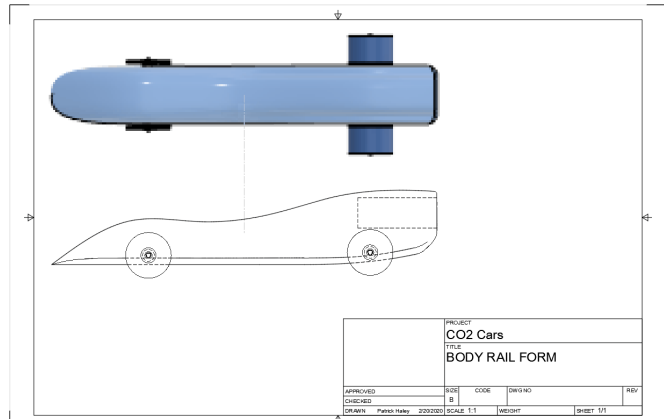


Fig. 5

Step 3. Move the cursor to the right of the Side View. Center the preview between the Side View and right border line. Click to place the Back View, **Fig. 6**.

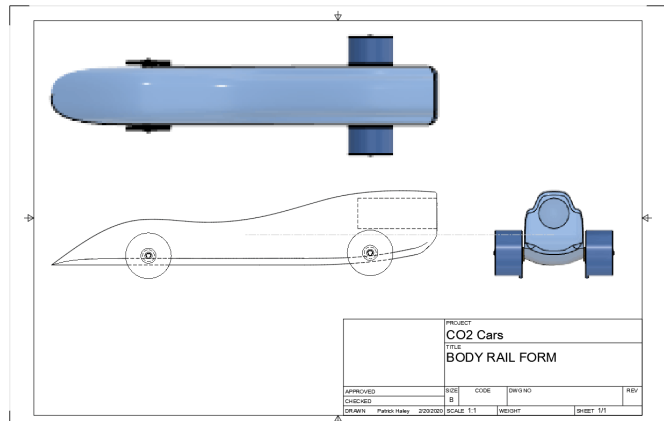


Fig. 6

Step 4. Move the cursor to the top left corner of the drawing and click to place the Isometric View, **Fig. 7**. Press ENTER.

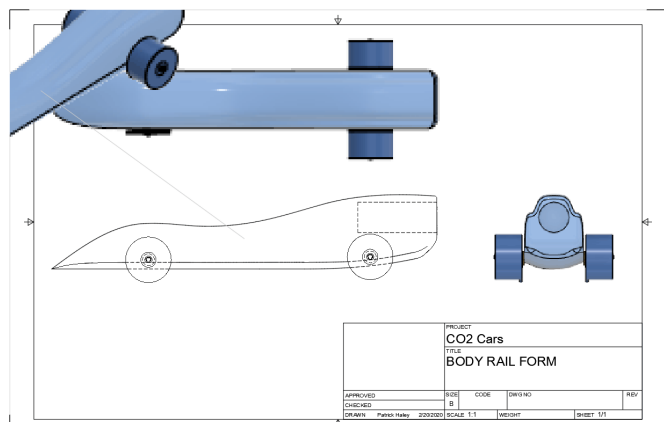




Fig. 7

Step 5. Double click the Isometric View to open Drawing View panel, **Fig. 8**.

Step 6. In the Drawing View panel set under Appearance, **Fig. 9**
Style **Shaded** 
Scale **key-in 1:1.5**
click Close.

Step 7. Click the Isometric View and grab center  of the Isometric View and move View to top right corner of drawing and click to place, **Fig. 10**.

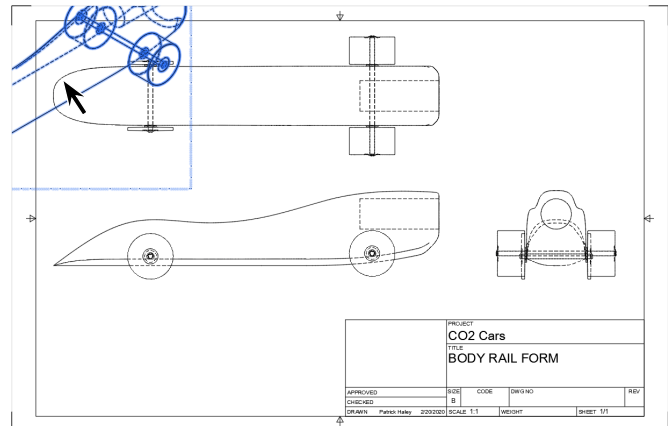


Fig. 8

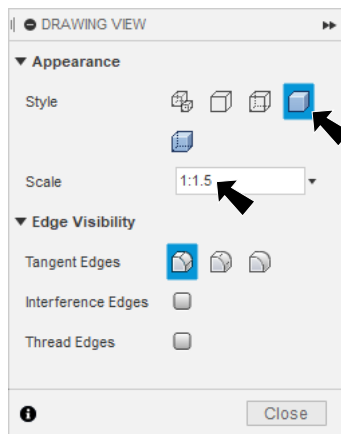


Fig. 9

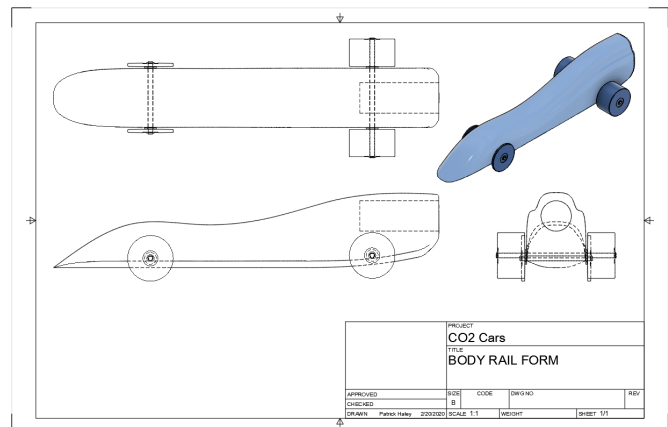


Fig. 10

E. Save as "BODY RAIL FORM DRAWING".

Step 1. Click File Menu > Save.

Step 2. Key-in **BODY RAIL FORM DRAWING** for the filename and press ENTER.

F. Add Dimensions.

Step 1. On the Drawing tab **DRAWING** click Dimensions Menu > Diameter Dimension .

Step 2. Add the Wheel diameters and Cartridge Hole diameter dimensions in Right and Front Views, **Fig. 11** and **Fig. 12**.

Step 3. Click Dimensions Menu > Linear Dimension .

Step 4. Add all the other linear dimensions **Fig. 11** and **Fig. 12**.

Step 5. Save. Use **Ctrl-S** and press **ENTER**.

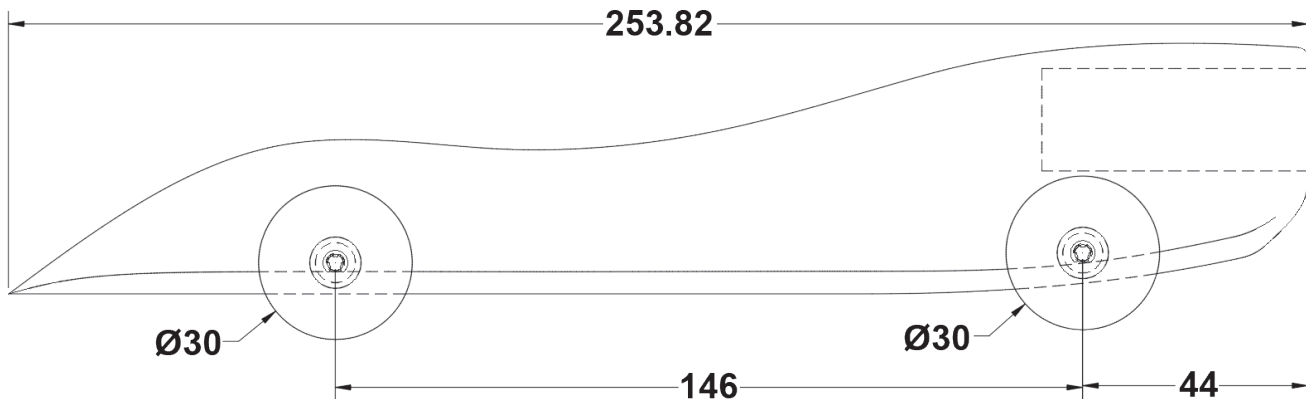


Fig. 11

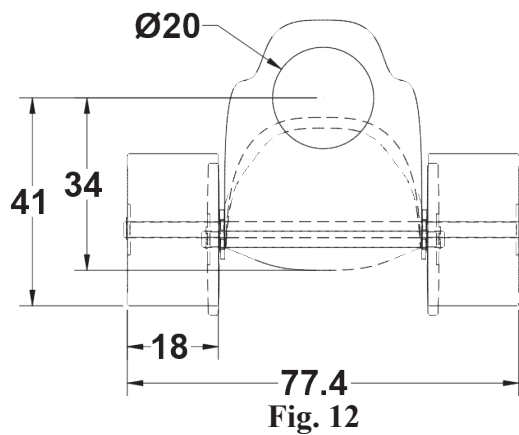


Fig. 12

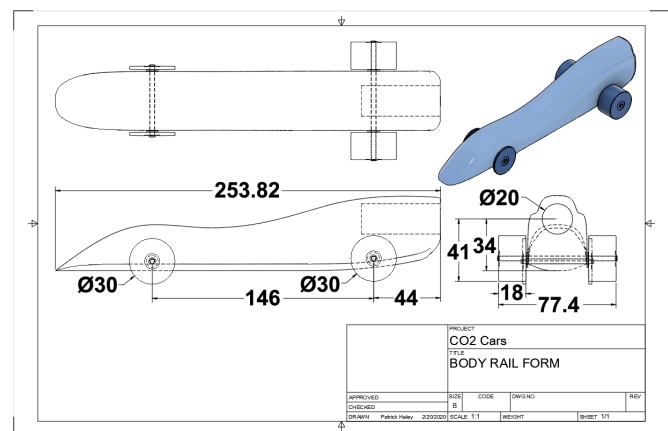


Fig. 13