

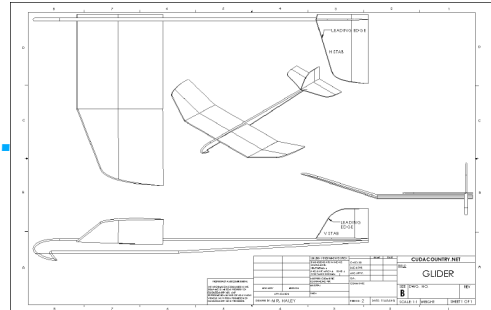


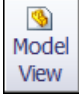
Chapter 8

Glider Drawing

A. Insert Side, Top and Isometric Views.

Step 1. Click File Menu > New, click **Drawing Metric** and OK.



Step 2. Click **Model View**  on the View Layout toolbar.

Step 3. Click **Browse** in the Property Manager.

Step 4. Select your **GLIDER ASSEMBLY** file and click Open.

Step 5. In the Property Manager, under Orientation

click **Right** 

check **Preview**

under Scale

select **Use custom scale** and set scale to **1:1**, Fig. 1.

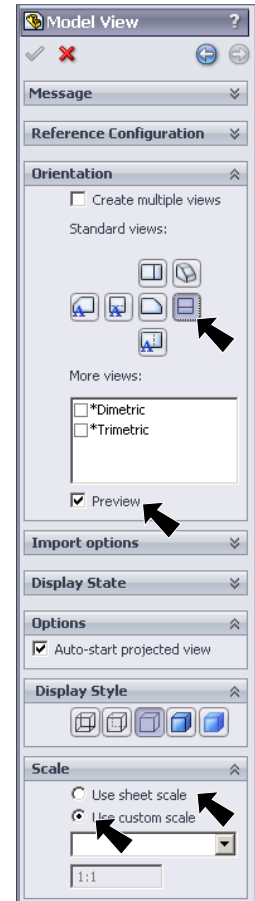


Fig. 1

Step 6. Move the cursor into the graphic area and click to place the Right Side view as shown in Fig. 2. Align the front of Fuselage with the left border line and align the bottom with the top of the title block.

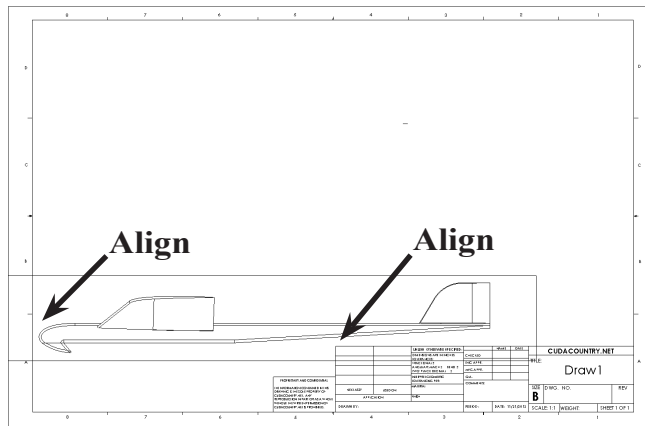


Fig. 2

Step 7. **Move the cursor straight up** and click to place the Top view as shown in Fig. 3. Align edge of Fuselage just below the top border line.

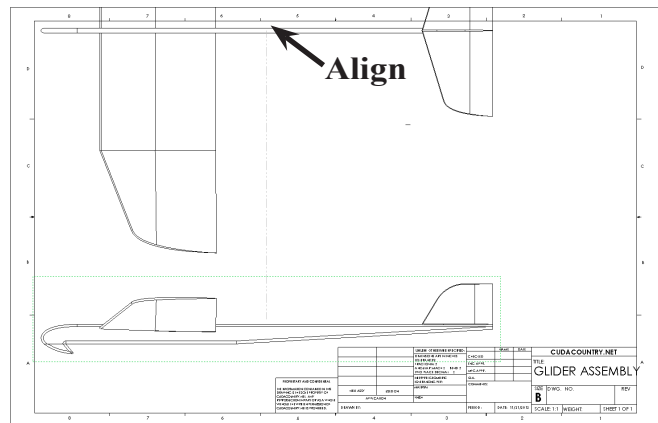
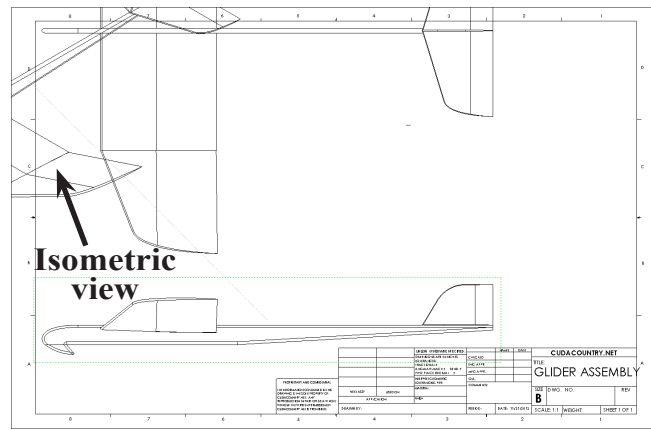


Fig. 3

Step 8. Move the cursor to the top left corner of the drawing and click to place the Isometric view, **Fig. 4**.



Step 9. Click OK  in the Property Manager.

Step 10. Click the Isometric view to select it, **Fig. 4**.

Fig. 4

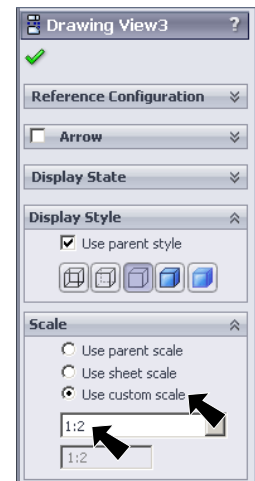




Fig. 5

Step 11. In the Property Manager under Scale
 select **Use custom scale**
 select **User Defined**
 key-in **1:2** for scale, **Fig. 5**.
 click OK 

Step 12. Grab any geometry of the Isometric view and move view to between Wing and H Stab in Top view, **Fig. 6**. Click OK  in the Property Manager.

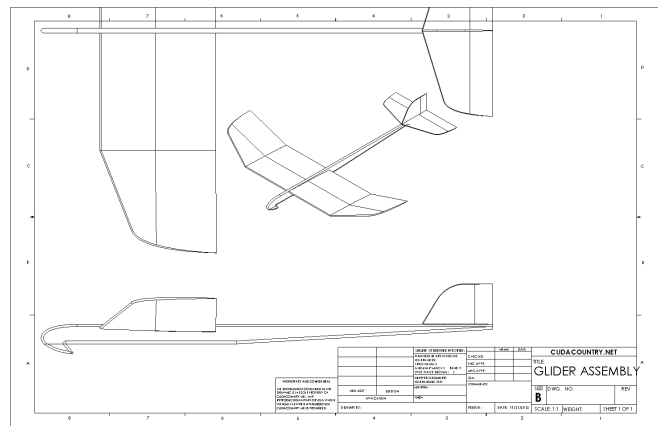



Fig. 6


B. Save as "GLIDER".

Step 1. Click File Menu > Save As.


Step 2. Key-in **GLIDER** for the filename and press ENTER.

C. Insert Front View.

Step 1. Click **View Layout**  on the Command Manager toolbar.

Step 2. Click **Model View**  on the View Layout toolbar.

Step 3. Click **Next**  in the Property Manager.

Step 4. In the Property Manager under Orientation
 click **Front** , **Fig. 7**
 check **Preview**
 under Scale
 click **Use custom scale**
 and set scale to **1:1**.

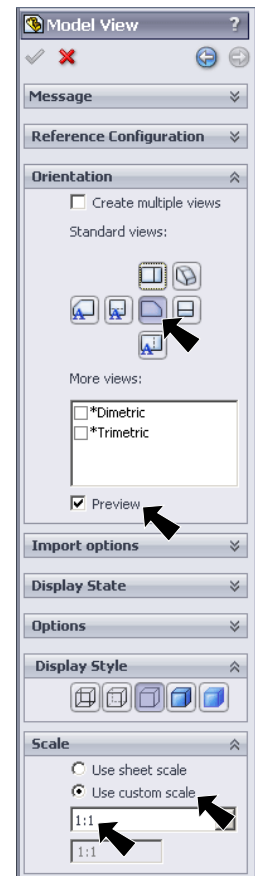


Fig. 7

Step 5. Move the cursor into the graphic area and click to place the Front view as shown in **Fig. 8**. Align the right edge of Fuselage just off the right border line.

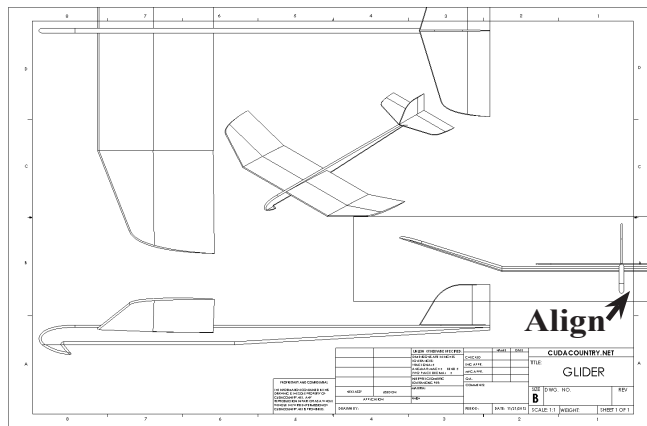



Fig. 8

Step 6. Click **OK**  in the Property Manager.

Step 7. Save. Use **Ctrl-S**.

D. Crop Views.

Step 1. Click **Sketch**  on the Command Manager toolbar.

Step 2. Click **Corner Rectangle**  (S) in the **Rectangle flyout**  on the Sketch toolbar.

Step 3. Draw a corner rectangle around the top view, **Fig. 9**. Position the top line of rectangle between top edge of Fuselage and top border line.

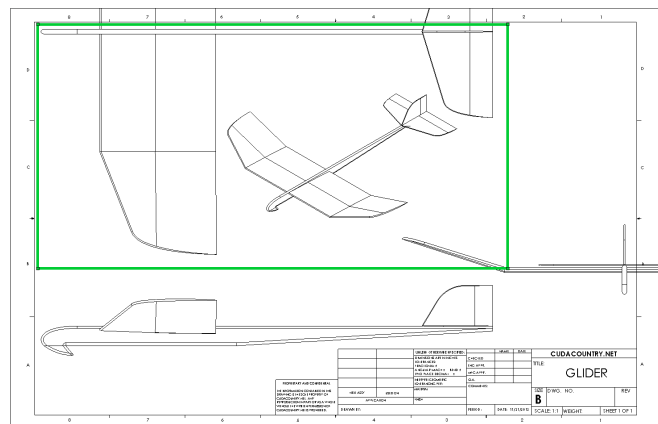
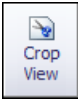



Fig. 9

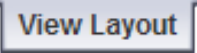
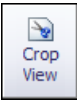
Step 4. Click **View Layout**  on the Command Manager toolbar.

Step 5. Click **Crop View**  on the View Layout toolbar.

Step 6. Click **Sketch**  on the Command Manager toolbar.

Step 7. Click **Corner Rectangle**  (S) on the Sketch toolbar.

Step 8. Draw a corner rectangle around the Front view, **Fig. 10**. Start rectangle **below** and to right of Fuselage and just inside right border line. Drag up and to left to drag around all of Front view.

Step 9. Click **View Layout**  on the Command Manager toolbar and **Crop View**  on the View Layout toolbar, **Fig. 11**.

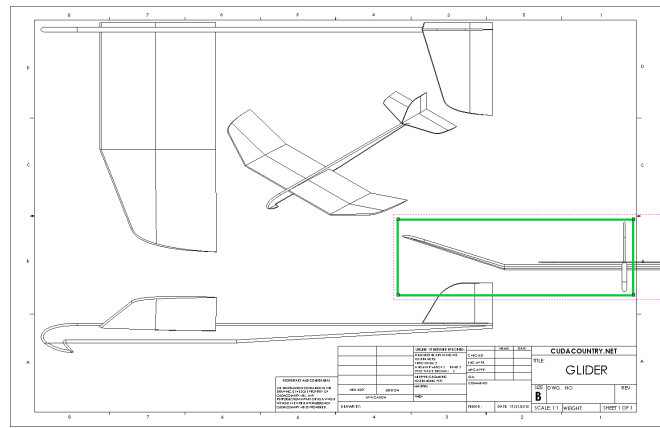


Fig. 10

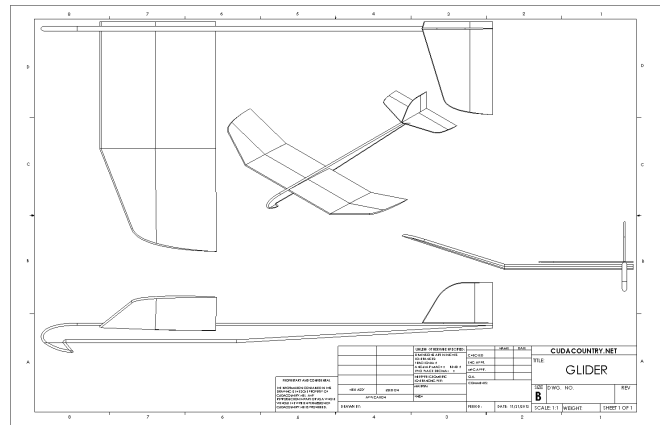
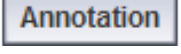
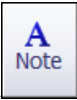


Fig. 11

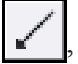
Step 10. Save. Use **Ctrl-S**.

E. Add Leaders and Notes to Stabilizers.

Step 1. Click **Annotation**  on the Command Manager toolbar.

Step 2. Click **Note**  on the Annotation toolbar.

Step 3. In the Note Property Manger, under Leader:

click **Leader**  **Fig. 12**
in Top view, click the Leading Edge of the **H Stab** and bring the text box **inside** H Stab and click, lock the Caps and key-in:

LEADING EDGE, **Fig. 13**

click OK  in Property Manager.

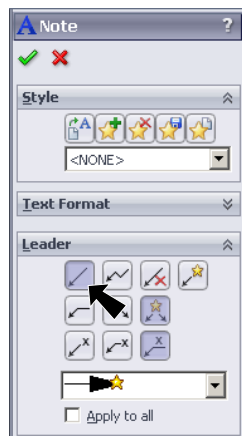


Fig. 12

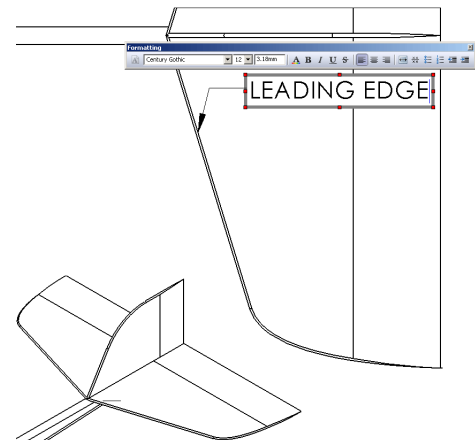
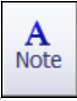




Fig. 13

Step 4. Click **Note**  on the Annotation toolbar.

Step 5. In the Note Property Manger, under Leader:

click **NO Leader**  (red X), Fig. 14
click **inside** H Stab and key-in **H STAB**, Fig. 15
click **OK**  in Property Manager.

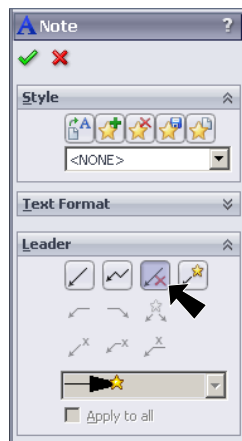


Fig. 14

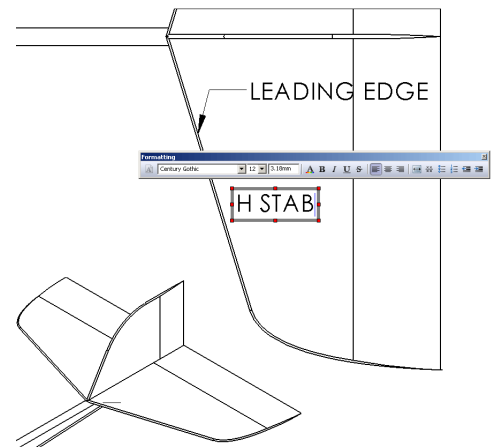
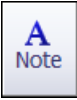




Fig. 15

Step 6. Click **Note**  on the Annotation toolbar.

Step 7. In the Note Property Manger, under Leader:

click **Leader**  Fig. 16
click the leading edge of the **V Stab** and bring the text box **inside** V Stab and click lock the Caps and key-in **LEADING EDGE**, Fig. 17
click **OK**  in Property Manager.

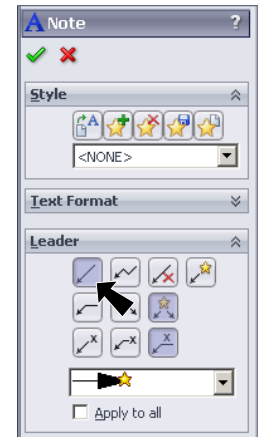




Fig. 16

Step 8. Click **Note**  on the Annotation toolbar.

Step 9. In the Note Property Manger, under Leader:

click **NO Leader**  (red X)
click **inside** V Stab and key-in **V STAB**, Fig. 18
click **OK**  in Property Manager.

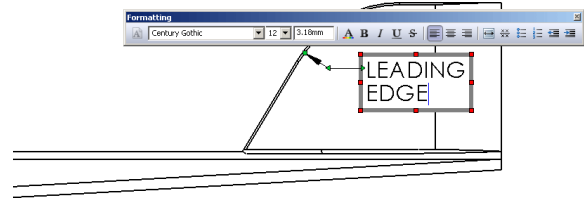


Fig. 17

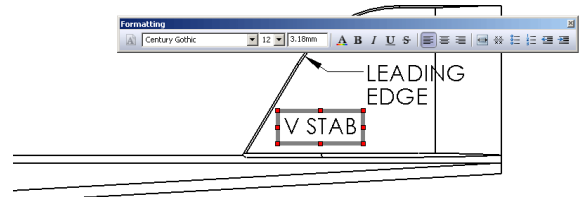



Fig. 18

F. Add Your Name and Period to Title Block.

Step 1. Use the **Zoom to Area**  in the View toolbar to drag a zoom window around the **DRAWN BY** and **PERIOD** in the title block, **Fig. 19**.

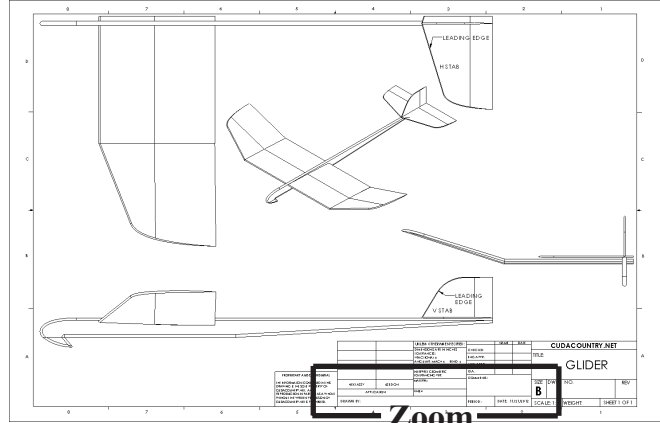
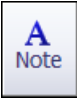


Fig. 19

Step 2. Click **Note**  on the Annotation toolbar.

Step 3. Click just to the right of **DRAWN BY**., **Fig. 20**.

Step 4. Lock the Caps and key-in **your first and last names**, **Fig. 20**.

Step 5. Click **OK**  in the Property Manager.

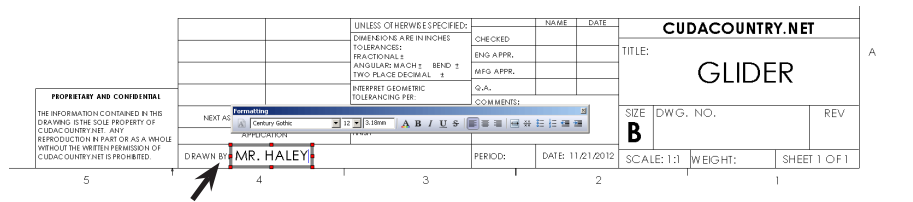


Fig. 20

Step 6. Click **Note**  on the Annotation toolbar.

Step 7. Click just to the right of **PERIOD**: and key-in **your Period number**, **Fig. 21**.

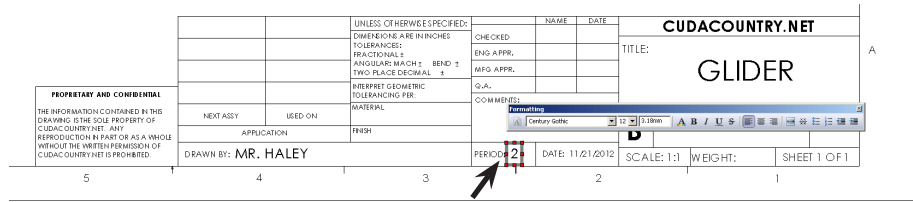


Fig. 21

Step 8. Click **OK**  in the Property Manager.

Step 9. Save. Use **Ctrl-S**.