



# Fuselage Blank

## A. Corner Rectangle.

Step 1. Click File Menu > New, click **Part Metric** and OK.

Step 2. Click **Right Plane**  in the Feature Manager and click **Sketch**  from the Content toolbar, **Fig. 1**.

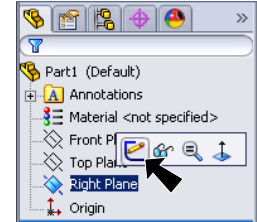




Fig. 1

Step 3. Click **Corner Rectangle**  (S) in the **Rectangle flyout**  on the Sketch toolbar.

Step 4. Draw a corner rectangle starting at the Origin , **Fig. 2**.

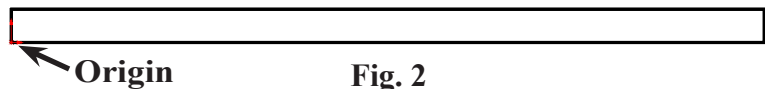



Fig. 2

Step 5. Click **Smart Dimension**  (S) on the Sketch toolbar.

Step 6. Dimension rectangle **13** by **300**, **Fig. 3**.

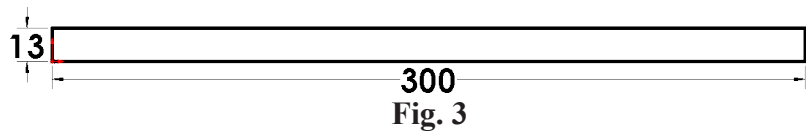
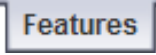
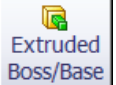




Fig. 3

Step 7. Click **Zoom to Fit**  (F) on the View toolbar.

Step 8. Click **Features**  on the Command Manager toolbar.

Step 9. Click **Extruded Boss/Base**  on the Features toolbar.

Step 10. In the Property Manager set:  
 under Direction 1, **Fig. 4**  
 End Condition **Mid Plane**  
**Depth**  **3**  
 click OK , **Fig. 5**.

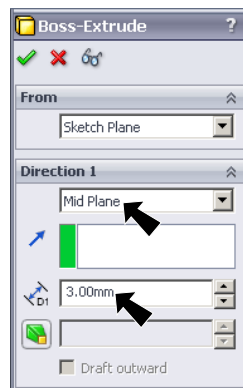


Fig. 4

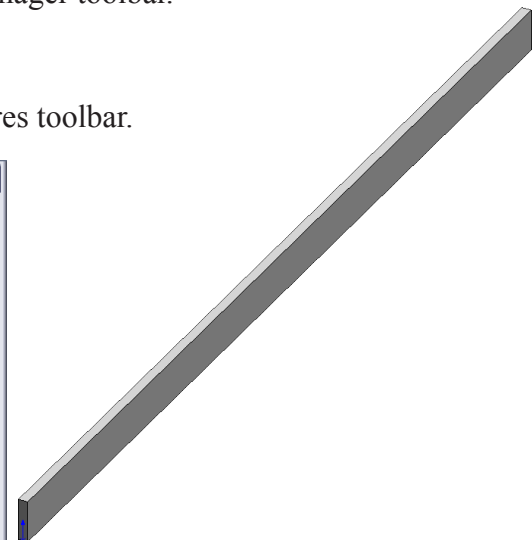


Fig. 5

## B. Save as "FUSELAGE BLANK".

Step 1. Click File Menu > Save As.

Step 2. Key-in **FUSELAGE BLANK** for the filename and press ENTER.

### C. Material Balsa.

Step 1. Right click Material  in the Feature Manager and click Edit Material, Fig. 6.

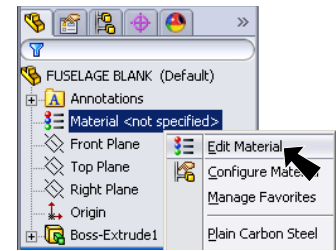


Fig. 6

Step 2. Expand Woods (click the +) in the material tree and select Balsa, Fig. 7. Click Apply and Close, Fig. 8.

Step 3. Save. Use Ctrl-S.

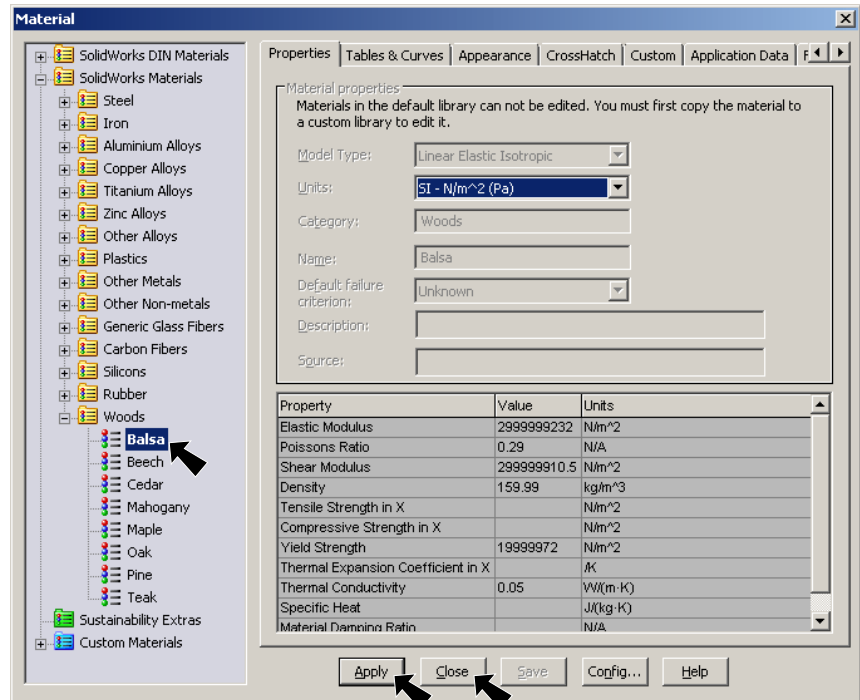


Fig. 7

### D. Enable PhotoView 360.

Step 1. If necessary, turn on PhotoView 360, click Tools Menu > Add-Ins.

Step 2. In the dialog box scroll down to PhotoView 360 and place a check in the check box under Active Add-Ins and Start-Up, Fig. 9. Click OK.

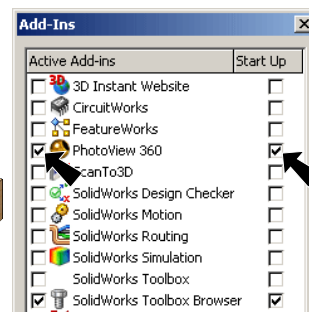


Fig. 9

### E. Rotate Mapping.

Step 1. Click PhotoView 360 Menu > Edit Appearance.

Step 2. In Appearances:

click Mapping tab , Fig. 10

click OK , Fig. 11.

Step 3. Save. Use Ctrl-S.

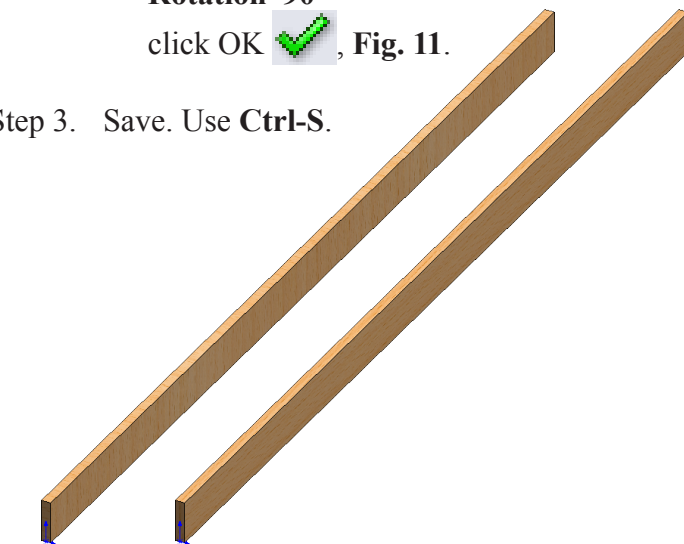


Fig. 8

Fig. 11

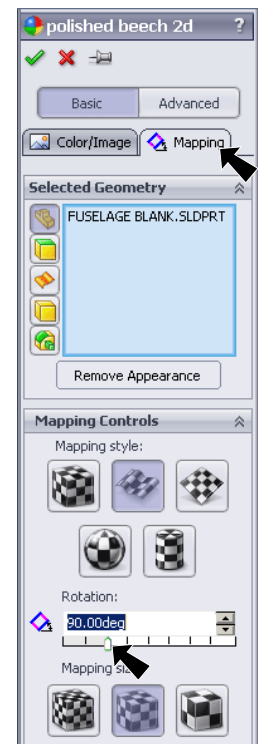


Fig. 10