


A. Enable Toolbox Library.

Step 1. If necessary, turn on Toolbox Library, click the flyout of **Options**  on the Standard toolbar and click **Add-Ins**.

Step 2. Check **SOLIDWORKS Toolbox Library** to place a check in the both check boxes, then click OK, **Fig. 1**.

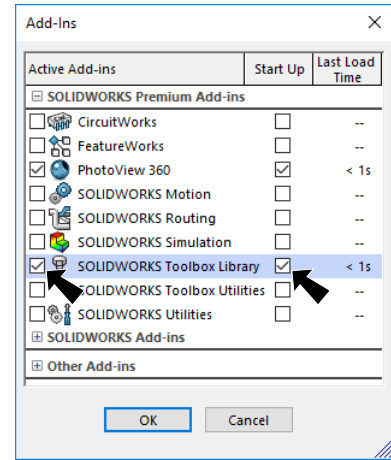







Fig. 1

B. Design Library.

Step 1. Click the **Design Library** tab  in the Task Pane, **Fig. 2**.

Step 2. Expand the **Toolbox**  **Toolbox**
 Expand **ANSI Inch** folder  **ANSI Inch**
 Expand **Nuts** folder  **Nuts**
 Click **Hex Nuts** folder  **Hex Nuts**

Step 3. In the lower pane, **right click Heavy Hex Jam Nut** and click **Create Part**, **Fig. 2**.

Step 4. In the Property Manager set:
 under Properties, **Fig. 3**
Size #9/16-12
 click OK .

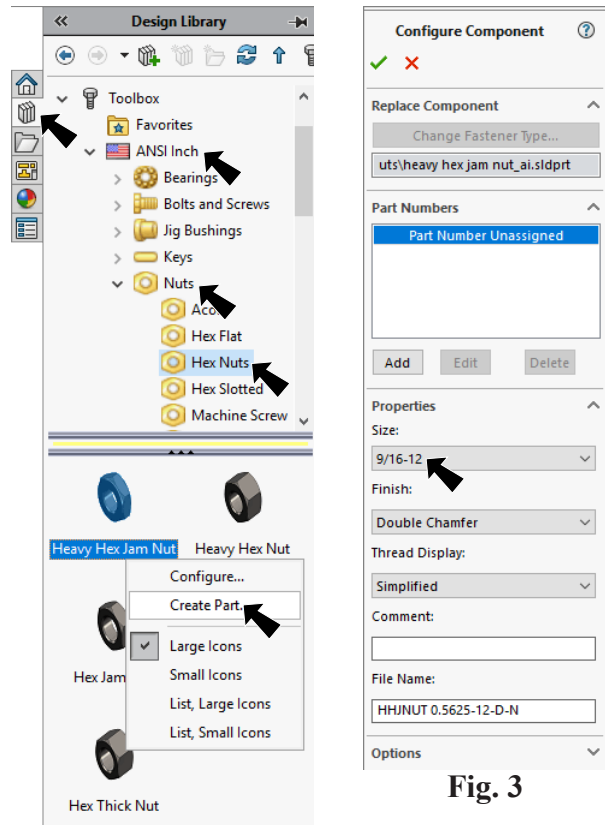


Fig. 3

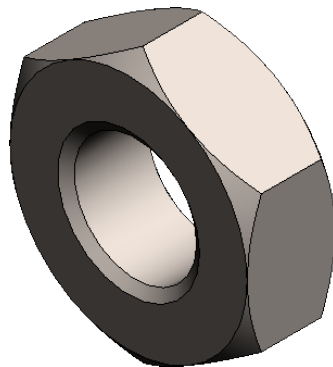


Fig. 4

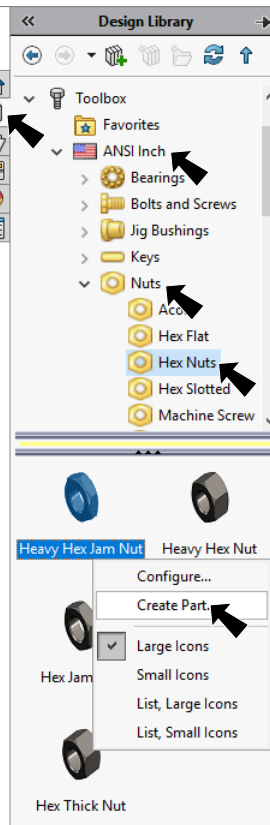


Fig. 2

C. Save As NUT.

Step 1. Click File Menu > Save As.

Step 2. In the Save As dialog box: **Fig. 5**
key-in **NUT** for the filename
in the Save in dialog box, **navigate to My Documents/Bridge folder**
click Save button.

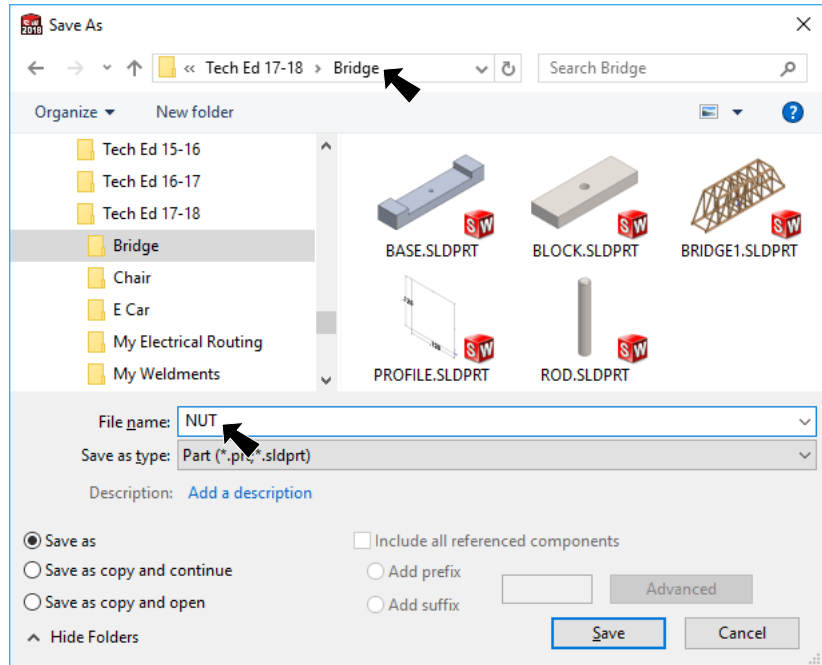


Fig. 5