



Set Toolbox Files Properties

A. sldsetdocprop.exe (SOLIDWORKS Set Doc Properties).

Step 1. If necessary, close any of your Gear toolbox files in SOLIDWORKS

Step 2. Open File Explorer.

Step 3. Navigate to Program Files/ SOLIDWORKS Corp/ SOLIDWORKS/ Toolbox/ data utilities folder

open sldsetdocprop.exe, Fig. 1.

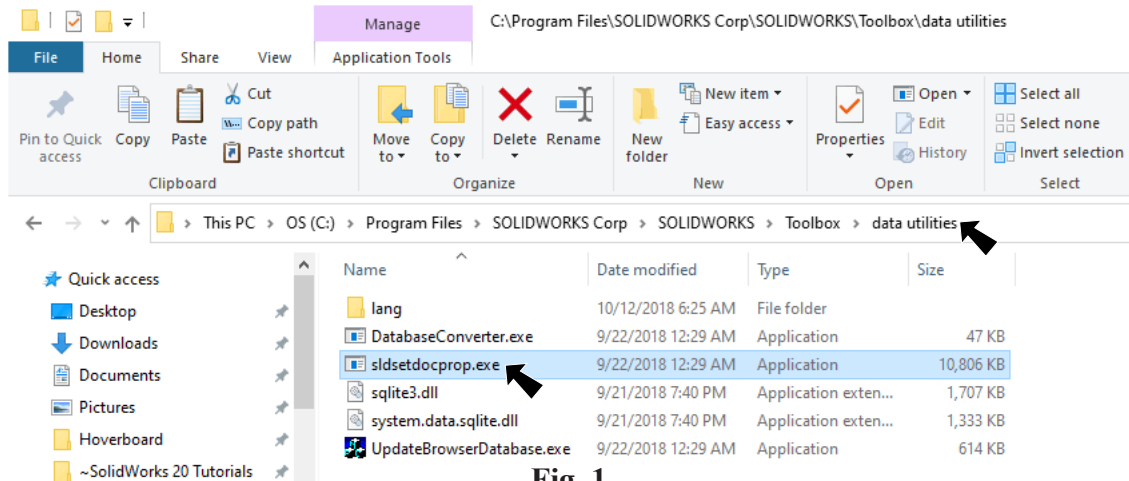


Fig. 1

Step 4. In the Set Document Property dialog box: click Add Files button, Fig. 2.

Step 5. In the Open dialog box: navigate to My Documents/ Tech Ed 20-21/Wind Up Car folder

Ctrl click the toolbox gears:

GEAR 12-8T

GEAR 12T

GEAR IDLER 32-8T

GEAR PAWL 32T

and click Open, Fig. 3.

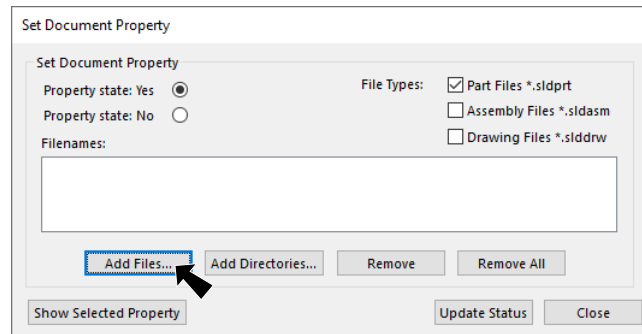


Fig. 2

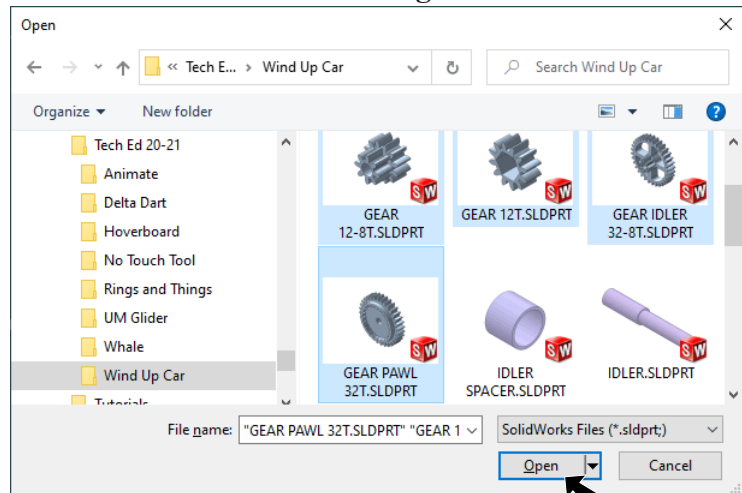


Fig. 3

Step 6 Back in the Set Document Property dialog box:
 under Set Document Property, **Fig. 4**
 select **Property state: No**
 click **Update Status** button.

Step 7. All is good. But, if you want to confirm
 update, select a file and click **Show Se-**
lected Property button, **Fig. 5**.

click **Close** button.

Step 8. In an assembly feature tree file will now
 show a part icon  as opposed to the
 toolbox icon .

Tip: Create a desktop short cut to **sldset-**
docprop.exe.

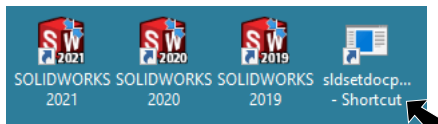


Fig. 6

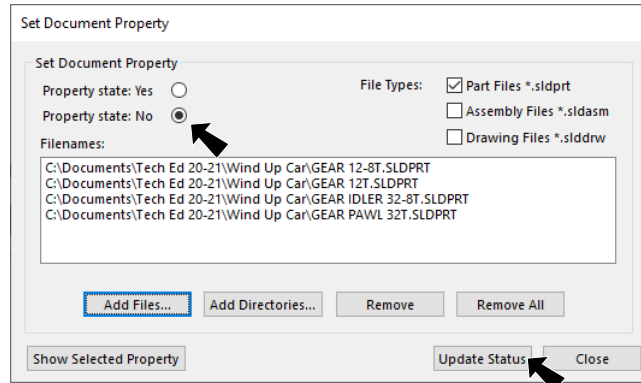


Fig. 4

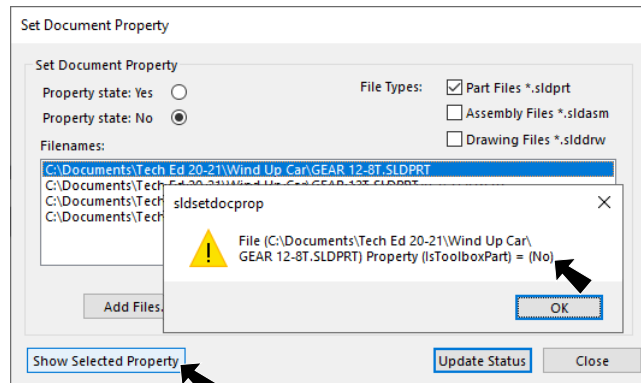


Fig. 5