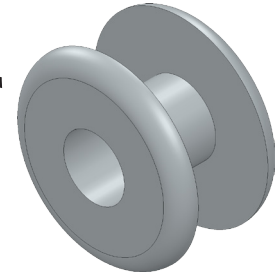


Rivet for Battery Holder



A. Revolve.

Step 1. Click File Menu > New, click **Part Metric** and OK.

Step 2. Click **Right Plane** in the Feature Manager and click **Sketch** on the context toolbar, **Fig. 1**.

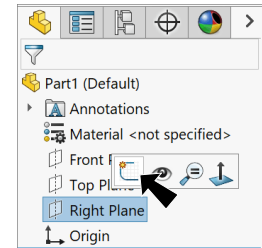


Fig. 1

Step 3. Click **Corner Rectangle** in the **Rectangle flyout** on the Sketch toolbar.

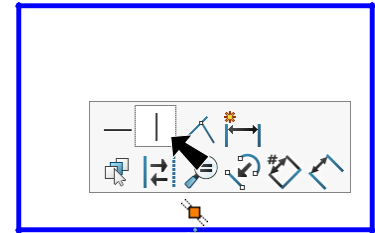
Step 4. Sketch rectangle **above** the Origin **Fig. 2**.



Origin

Fig. 2

Step 5. **Right click graphics area and click Select** from menu to unselect Rectangle Tool.



Ctrl click midpoint and Origin

Fig. 3

Step 6. **Ctrl click Midpoint** of bottom line and **Origin** to select both. Release Ctrl key and click **Make Vertical** on the context toolbar, **Fig. 3**.

Tip: To highlight Midpoint, confirm **Dynamic highlight from graphics view** is checked in **Systems Options**. Use **Options** on the Standard toolbar. Under System Options, Display, check **Dynamic highlight from graphics view**.

Step 7. Click **Centerline** in the **Line flyout** on the Sketch toolbar.



Step 8. Sketch **horizontal centerline** from the **Origin** , **Fig. 4**.

Fig. 4

Step 9. Click **Smart Dimension** (S) on the Sketch toolbar.

Step 10. Add dimensions, **Fig. 5**.

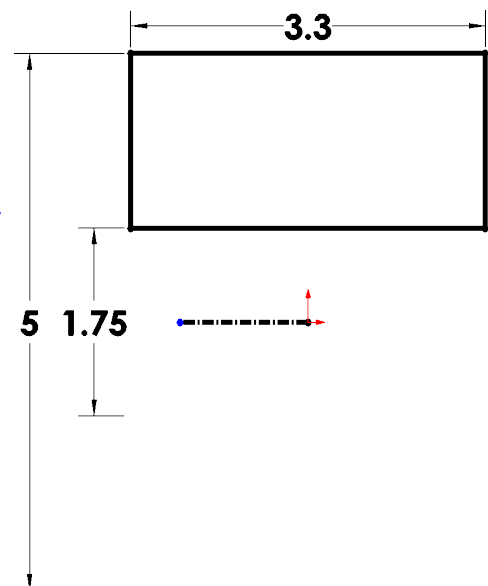

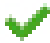


Fig. 5

Step 11. Click **Sketch Fillet**  on the Sketch toolbar.

Step 12. In the Sketch Fillet Property Manager set:
under Fillet Parameters, **Fig. 6**

Radius  **.5**
click **top corners**, **Fig. 7**
click **OK**  **twice.**

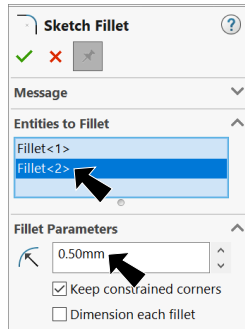


Fig. 6

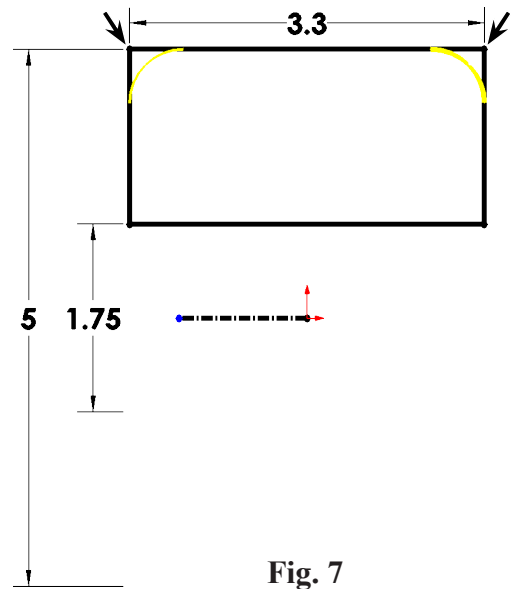


Fig. 7

Step 13. Click **Line**  (**L**) on the Sketch toolbar.

Step 14. Sketch lines from endpoint of fillet and across horizontally,
Fig. 8.

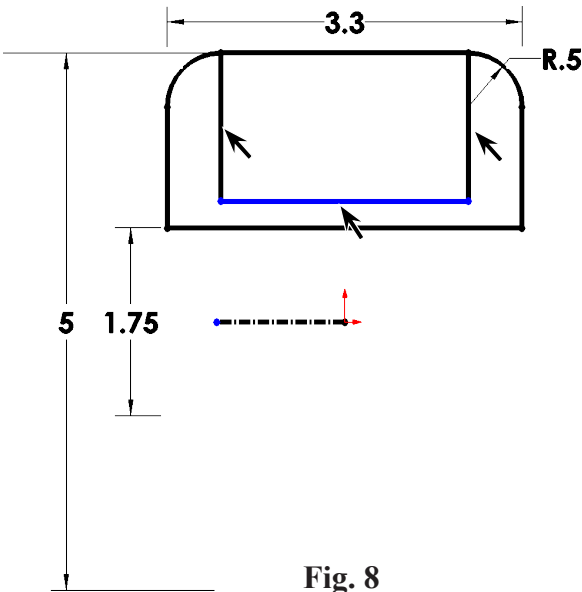


Fig. 8

Step 15. Click **Smart Dimension**  (**S**) on the Sketch toolbar.

Step 16. Add **.08** dimension, **Fig. 9.**

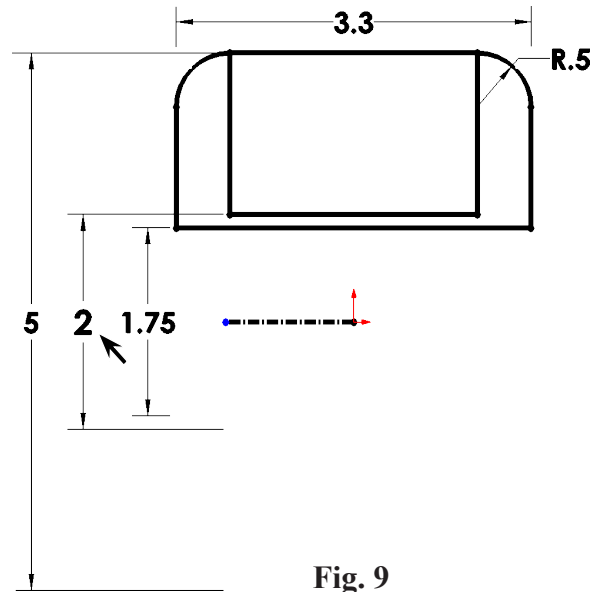



Fig. 9

Step 17. Click **Features**  on the Command Manager toolbar.

Step 18. Click **Revolved Boss/Base**  on the Features toolbar.

Step 19. In the Revolve Property Manger set:

under Axis of Revolution  centerline should be selected, **Fig. 10**

under Selected contours select the contour inside lines, **Fig. 11**

click OK .

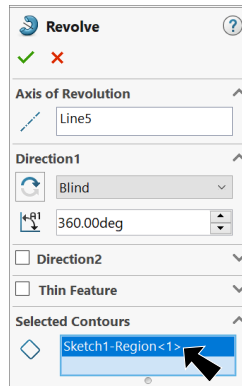


Fig. 10

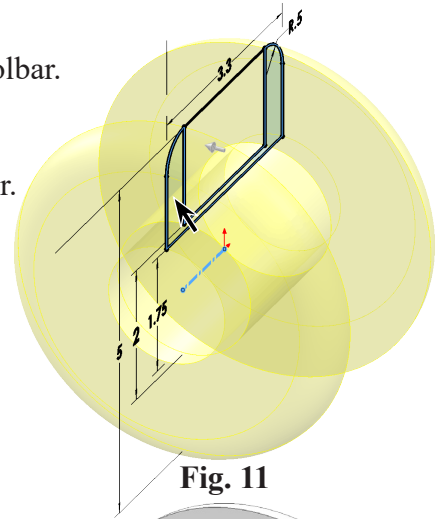


Fig. 11

B. Save as "RIVET".

Step 1. Click File Menu > Save As.

Step 2. Key-in **RIVET** for the filename and press ENTER.

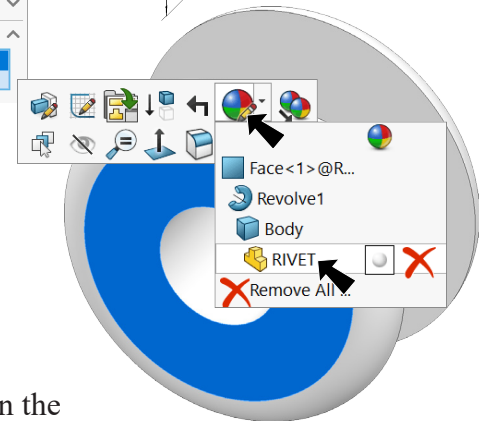


Fig. 12

C. Appearance.

Step 1. Click part to select, click **Appearance Callout**  on the Context toolbar and click **RIVET** , **Fig. 12**.

Step 2. In the Appearances Task pane, expand **Metal**, click **Chrome** and in the lower pane select **chromium plate**, **Fig. 13**.

Step 3. Click OK  in the Property Manager.

Step 4. Save  (Ctrl-S).

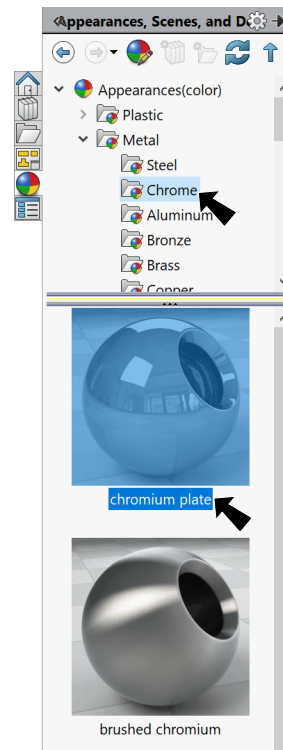


Fig. 13

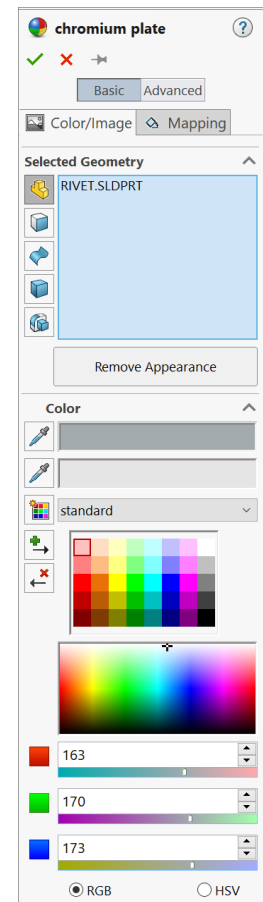


Fig. 14

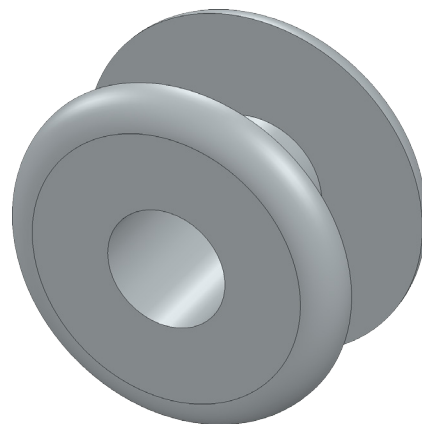


Fig. 15