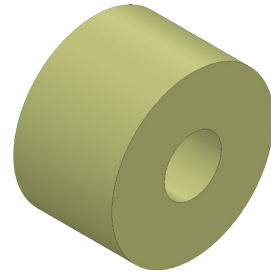




Tank Spacer



A. Extrude.

Step 1. Click File Menu > New, click **Part Metric** and OK.

Step 2. Click **Right Plane**  in the Feature Manager and click **Sketch**  on the context toolbar, **Fig. 1**.

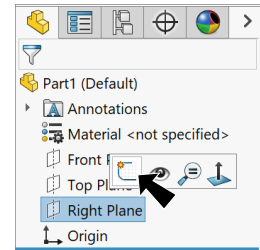



Fig. 1

Step 3. Click **Circle**  (S) on the Sketch toolbar.

Step 4. Sketch **two circles** starting at the Origin , **Fig. 2**.

Step 5. Click **Smart Dimension**  (S) on the Sketch toolbar.

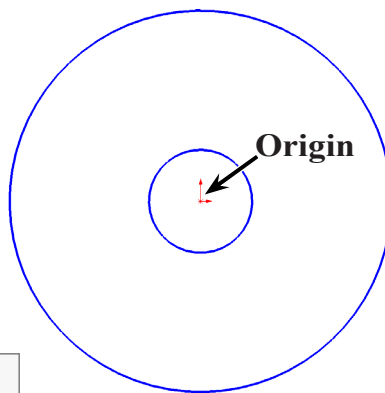


Fig. 2

Step 6. Dimension **diameters 7.4 and 2**, **Fig. 3**.

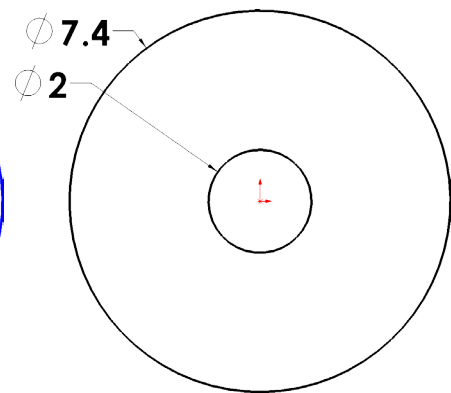

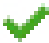


Fig. 3

Step 7. Click **Offset Entities**  on the Sketch toolbar.

Step 8. In the Offset Entities Property Manager set:
under Parameters, **Fig. 4**

Distance  **.3 (clearance)**
under Construction geometry
check **Base geometry**
click **small circle**, **Fig. 5**
click OK .

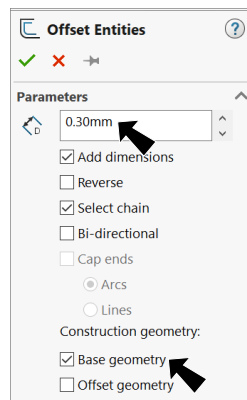


Fig. 4

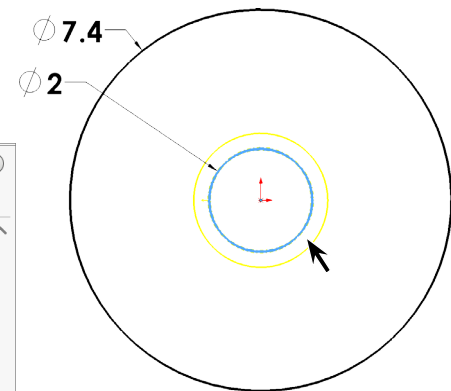


Fig. 5

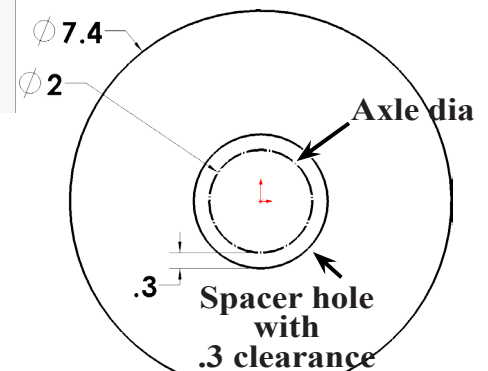


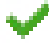


Fig. 6

Step 9. Click **Features**  on the Command Manager toolbar.

Step 10. Click **Extruded Boss/Base**  on the Features toolbar.

Step 11. In the Property Manager set:
under Direction 1, **Fig. 7**
End Condition **Mid Plane**
Depth  **4.5**
click OK .

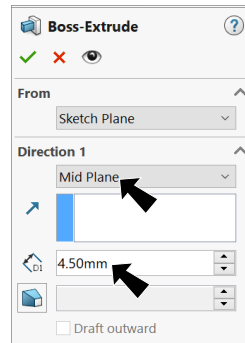


Fig. 7

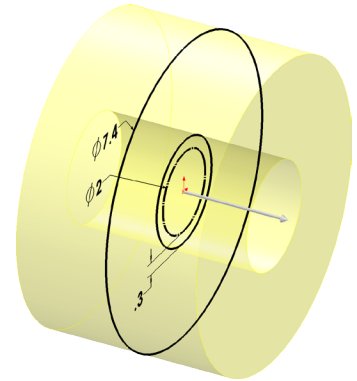


Fig. 8

B. Save as "SPACER".

Step 1. Click File Menu > Save As.


Step 2. Key-in **SPACER** for the filename and press ENTER.

Tip: Create a **Tank folder** in your My Document folder to save the your Tank project files. At cudacount we go a step further, and create a Tech Ed [school year] folder and in that folder we create the Tank folder.
Documents\Tech Ed 21-22\Tank.

C. Save Appearance: Green.

Step 1. Click part, click **Appearance Callout**  on the context toolbar and click **SPACER** , Fig. 9.

Step 2. In the Appearances Task pane, expand **Plastic**, click **High Gloss** and in the lower pane select **white high gloss plastic**, Fig. 10.

Step 3. In the Appearances Property Manager set:
 click **Advanced** button under Color, Fig. 11
 set RGB values
R 171
G 175
B 110
 under Appearance
 click **Save Appearance** button
 key-in **army green high gloss plastic** for file name
 Navigate to **My Documents/Tech Ed 21-22/Tank** folder
 click **Save**, Fig. 12.
 Click **Yes** in the **make folder visible** message, Fig. 13.
 click **OK** .

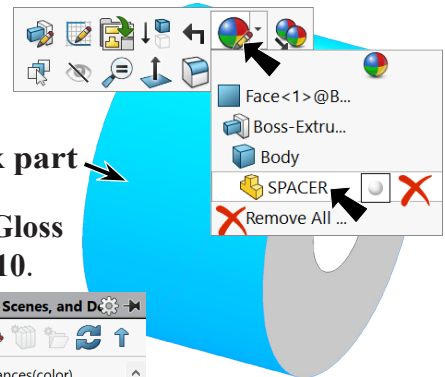


Fig. 9

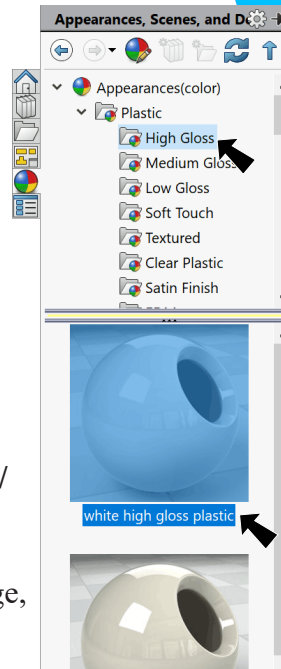


Fig. 10

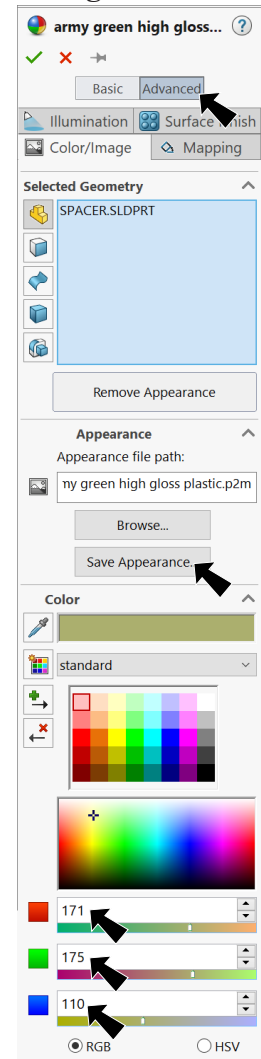


Fig. 11

Step 4. Save  (Ctrl-S).

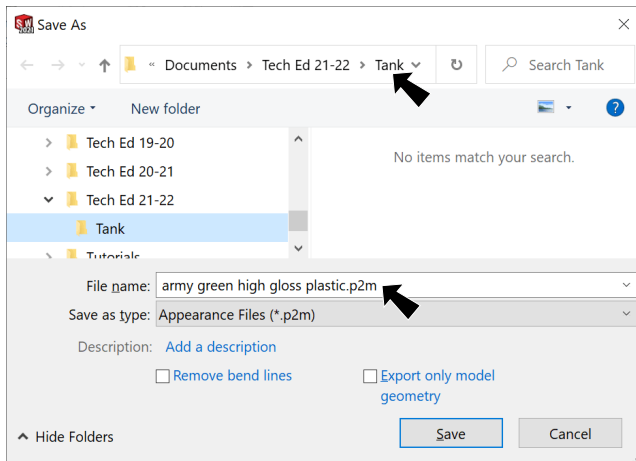


Fig. 12

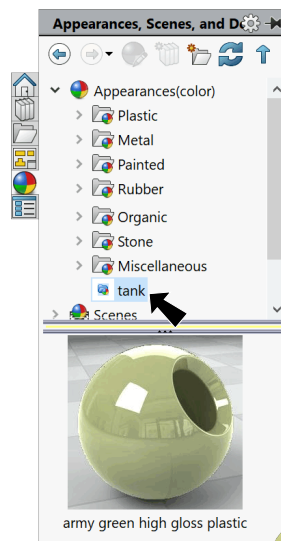


Fig. 14

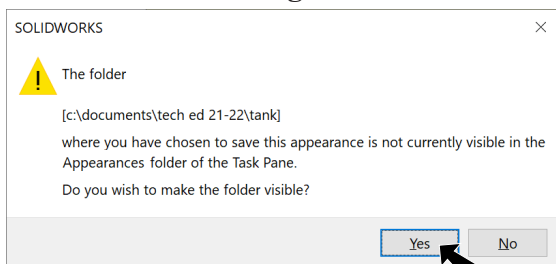


Fig. 13

Tip: Green appearance now appears at bottom of Appearances, Fig. 14.

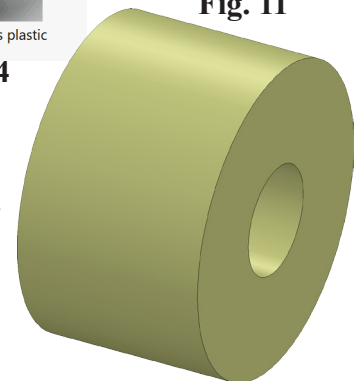


Fig. 15