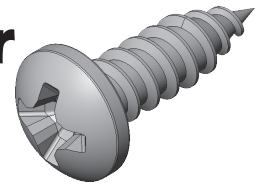


Screw from McMaster-Carr



A. McMaster-Carr website.

Step 1. Go to [McMaster-Carr](#) web page 18-8 Stainless Steel Phillips Rounded Head Screws for Sheet Metal .

Step 2. Click part number **92470A108**
No. 4 3/8"
set file type to 3-D SOLIDWORKS
click Download, Fig. 1.

B. Copy Screw File.

Step 1. Use File Explorer (**Windows-E**) to copy the screw file from your Downloads folder to your **Airmaster** folder, **Fig. 2.**

The mates for the screw are in next chapter, the Assembly Chapter 8.

McMASTER-CARR

screws

18-8 Stainless Steel Phillips Rounded Head Screws for Sheet Metal
 metal. Length is measured from under the head.

Black-oxide stainless steel screws have a dark surface color.

For technical drawings and 3-D models, click on a part number.

18-8 Stainless Steel—Inch

Lg.	Head			Drive Size	Drill Bit Size	Approximate Threads per Inch	Pkg Qty.	Pkg.	
	Dia.	Ht.	No.						
No. 0									
1/8"	0.116"	0.044"	No. 0	No. 55	52	50	92470A015	\$10.62	
3/16"	0.116"	0.044"	No. 0	No. 55	52	50	92470A018	7.02	
1/4"	0.116"	0.044"	No. 0	No. 55	52	10	92470A022	7.42	
5/16"	0.116"	0.044"	No. 0	No. 55	52	50	92470A024	7.48	
3/8"	0.116"	0.044"	No. 0	No. 55	52	10	92470A026	7.59	
7/16"	0.116"	0.044"	No. 0	No. 55	52	50	92470A028	7.88	
1/2"	0.116"	0.044"	No. 0	No. 55	52	10	92470A031	7.78	
9/16"	0.116"	0.044"	No. 0	No. 55	52	50	92470A041	10.48	
3/4"	0.116"	0.044"	No. 0	No. 55	52	50	92470A045	10.79	
No. 1									
1/8"	0.142"	0.053"	No. 0	No. 52	48	50	92470A048	6.61	
3/16"	0.142"	0.053"	No. 0	No. 52	48	50	92470A049	7.07	
1/4"	0.142"	0.053"	No. 0	No. 52	48	10	92470A050	7.08	
5/16"	0.142"	0.053"	No. 0	No. 52	48	50	92470A055	9.12	
3/8"	0.142"	0.053"	No. 0	No. 52	48	10	92470A054	7.29	
7/16"	0.142"	0.053"	No. 0	No. 52	48	50	92470A056	7.26	
1/2"	0.142"	0.053"	No. 0	No. 52	48	10	92470A057	7.50	
5/8"	0.142"	0.053"	No. 0	No. 52	48	50	92470A061	8.45	
3/4"	0.142"	0.053"	No. 0	No. 52	48	50	92470A065	10.12	
No. 2									
1/8"	0.167"	0.062"	No. 1	No. 48	32	50	92470A089	7.71	
3/16"	0.167"	0.062"	No. 1	No. 48	32	50	92470A091	6.39	
1/4"	0.167"	0.062"	No. 1	No. 48	32	100	92470A095	4.40	
5/16"	0.167"	0.062"	No. 1	No. 48	32	100	92470A099	4.29	
3/8"	0.167"	0.062"	No. 1	No. 48	32	100	92470A097	4.37	
7/16"	0.167"	0.062"	No. 1	No. 48	32	100	92470A102	5.14	
1/2"	0.167"	0.062"	No. 1	No. 48	32	100	92470A098	5.58	
5/8"	0.167"	0.062"	No. 1	No. 48	32	100	92470A101	5.45	
3/4"	0.167"	0.062"	No. 1	No. 48	32	100	92470A103	5.86	
No. 4									
3/16"	0.219"	0.08"	No. 1	No. 44	24	100	92470A106	5.14	
1/4"	0.219"	0.08"	No. 1	No. 44	24	100	92470A107	3.93	
5/16"	0.219"	0.08"	No. 1	No. 44	24	100	92470A109	6.48	
3/8"	0.219"	0.08"	No. 1	No. 44	24	100	92470A108	4.64	
Phillips Rounded Head Screws for Sheet Metal, 18-8 Stainless Steel, Number 4 Size, 3/8" Long									
							<input type="checkbox"/> Packs of 100		
							ADD TO ORDER		
							Delivers tomorrow		
Product Detail							3-D Solidworks	Download	
7/16"	0.219"	0.08"	No. 1	No. 44	24	100	92470A111	6.62	
1/2"	0.219"	0.08"	No. 1	No. 44	24	100	92470A110	6.61	
5/8"	0.219"	0.08"	No. 1	No. 44	24	100	92470A112	7.20	
3/4"	0.219"	0.08"	No. 1	No. 44	24	100	92470A113	7.66	
1"	0.219"	0.08"	No. 1	No. 44	24	100	92470A115	8.94	
1 1/4"	0.219"	0.08"	No. 1	No. 44	24	100	92470A388	10.35	
1 1/2"	0.219"	0.08"	No. 1	No. 44	24	50	92470A117	9.19	
No. 5									
1/4"	0.245"	0.089"	No. 1	No. 36	22	100	92470A119	6.57	
5/16"	0.245"	0.089"	No. 1	No. 36	22	100	92470A122	6.81	

Fig. 1

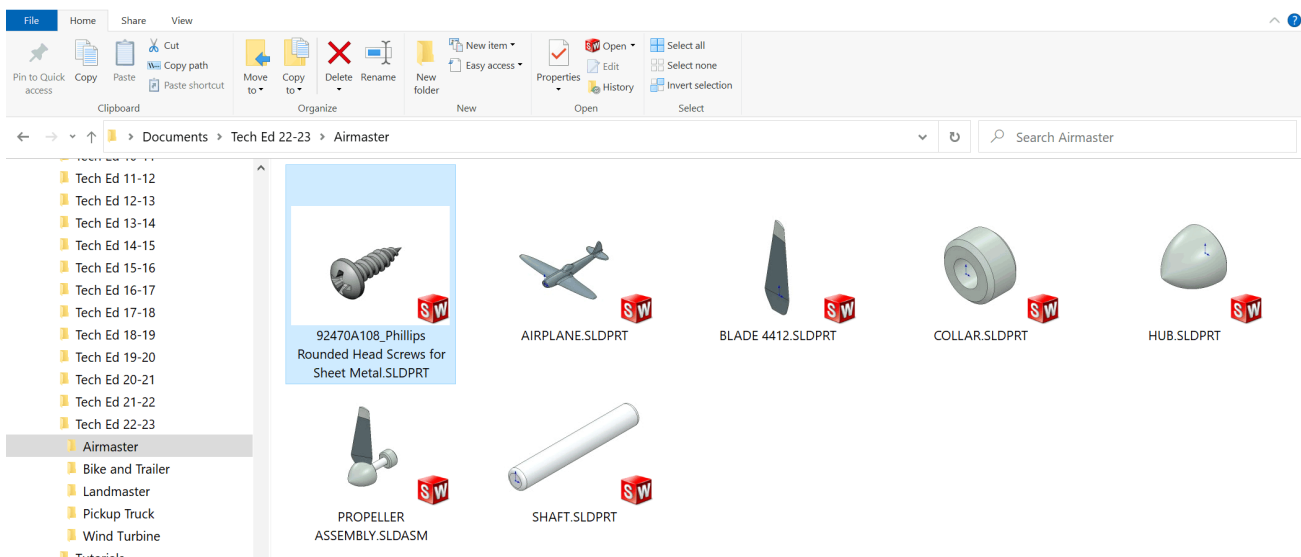


Fig. 2