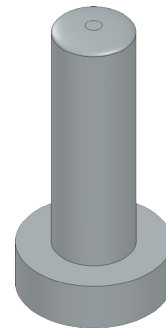




E's Small Car Battery Terminal




A. Extrude1.

Step 1. Click **New**  on the Standard toolbar, click **Part Metric**  and OK.

Step 2. Click **Top Plane**  in the Feature Manager and click **Sketch**  on the context toolbar, **Fig. 1**.

Step 3. Click **Circle**  (S) on the Sketch toolbar.

Step 4. Sketch circle at Origin , **Fig. 2**.

Step 5. Click **Smart Dimension**  (S) on the Sketch toolbar.

Step 6. Dimension **diameter 9.2**, **Fig. 2**.

Step 7. Click **Features**  on the Command Manager toolbar.

Step 8. Click **Extruded Boss/Base**  on the Features toolbar.

Step 9. In the Boss-Extrude Property Manager set:

under Direction 1, **Fig. 3**

End Condition **Blind**

Depth  **3**

click OK .

Step 10. Save  (Ctrl-S).

B. Save as "TERMINAL".

Step 1. Click File Menu > Save As.

Step 2. Key-in **TERMINAL** for the filename and press ENTER.

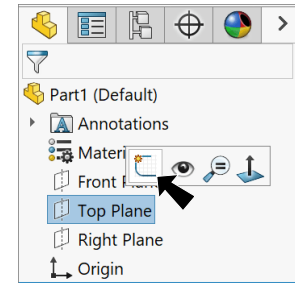


Fig. 1

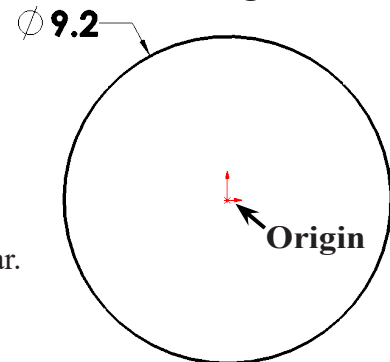


Fig. 2

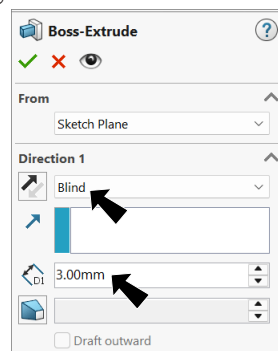


Fig. 3

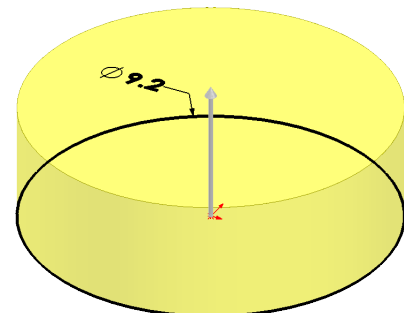
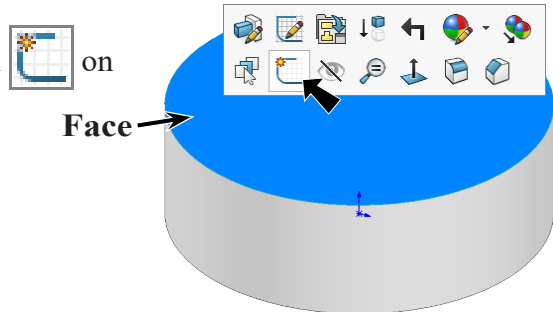


Fig. 4

C. Extrude2.

Step 1. Click the **top face of Extrude1** and click **Sketch**  on the context toolbar, **Fig. 5**.

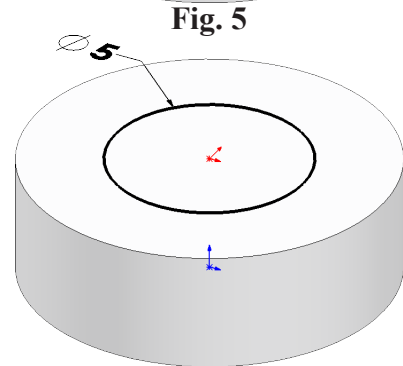


Step 2. Click **Circle**  (S) on the Sketch toolbar.

Step 3. Sketch circle at Origin , **Fig. 6**.



Step 4. Click **Smart Dimension**  (S) on the Sketch toolbar.

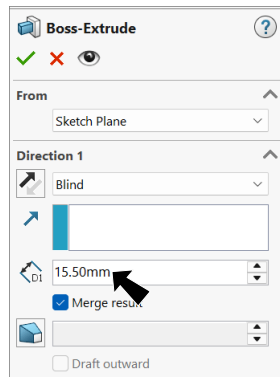
Step 5. Dimension **diameter 5**, **Fig. 6**.



Step 6. Click **Features**  on the Command Manager toolbar.

Step 7. Click **Extruded Boss/Base**  on the Features toolbar.

Step 8. In the Boss-Extrude Property Manager set:
 under Direction 1, **Fig. 7**
 End Condition **Blind**
 Depth  **15.5**
 click OK .



Step 9. Save  (Ctrl-S).

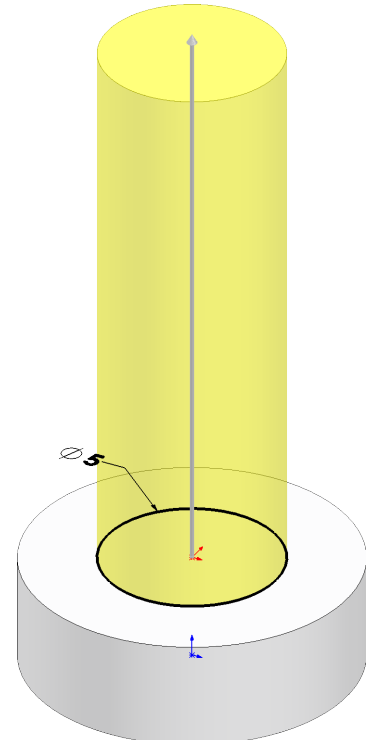


Fig. 8

D. Fillet Asymmetric.

Step 1. Click **Fillet**  on the Features toolbar.

Step 2. In the Fillet Property Manager set:
select **Manual**, **Fig. 9**
under Fillet Type

select **Constant Size Fillet** 
under Fillet Parameters

Fillet Method **Asymmetric**

Distance 1  **.5**

Distance 2  **2**

under Items To Fillet
click **top edge**, **Fig. 10**

click **OK** .

Step 3. Save  (Ctrl-S).

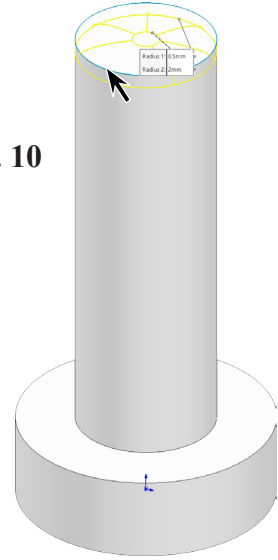


Fig. 10

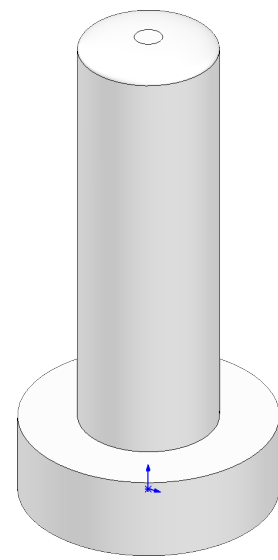


Fig. 11

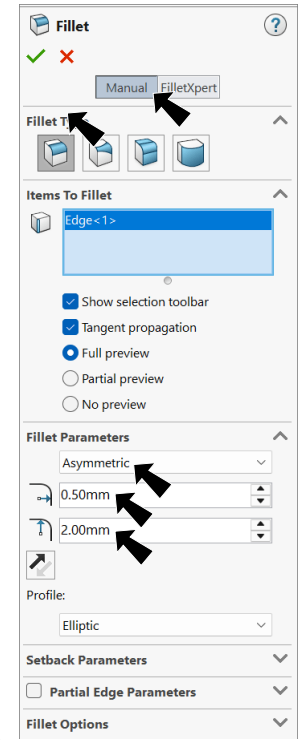


Fig. 9

E. Appearance: Chrome.

Step 1. Click part to select, click **Appearance Callout**  on the Context toolbar and click **TERMINAL** , Fig. 12.

Step 2. In the Appearances Task pane, expand **Metal**, click **Chrome** and in the lower pane select **chromium plate**, Fig. 13.

Step 3. Click OK  in the Property Manager.

Step 4. Save  (Ctrl-S).

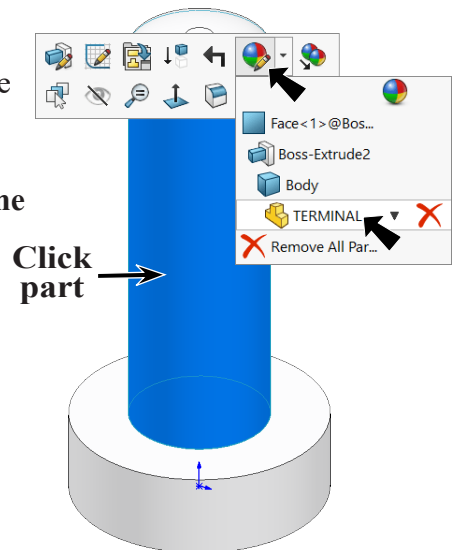


Fig. 12

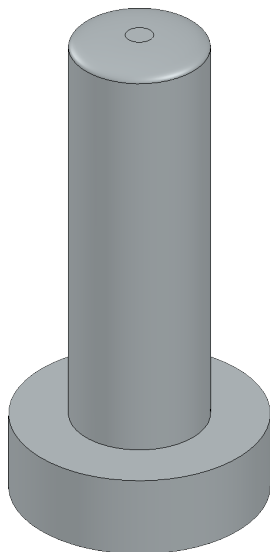


Fig. 15

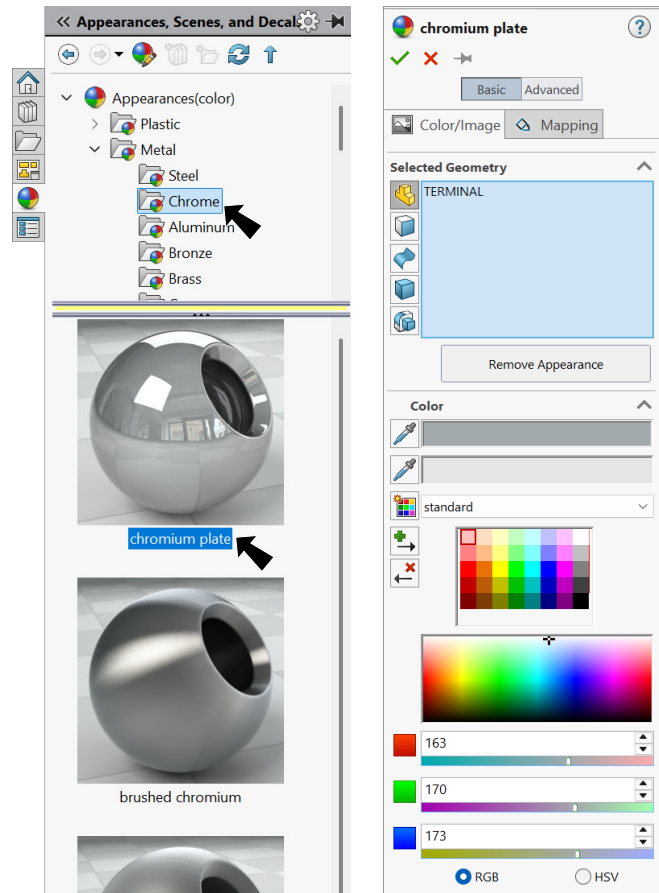


Fig. 13

Fig. 14